

For Research Use Only

# PLA2G1B Monoclonal antibody

Catalog Number: 66397-1-Ig 1 Publications



## Basic Information

<b>Catalog Number:</b> 66397-1-Ig	<b>GenBank Accession Number:</b> BC005386	<b>Purification Method:</b> Protein A purification
<b>Size:</b> 150ul , Concentration: 1700 ug/ml by Nanodrop and 1000 ug/ml by Bradford method using BSA as the standard;	<b>GeneID (NCBI):</b> 5319	<b>CloneNo.:</b> 1F2C10
<b>Source:</b> Mouse	<b>UNIPROT ID:</b> P04054	<b>Recommended Dilutions:</b> WB: 1:1000-1:6000 IHC: 1:100-1:400
<b>Isotype:</b> IgG2a	<b>Full Name:</b> phospholipase A2, group IB (pancreas)	
<b>Immunogen Catalog Number:</b> AG8812	<b>Calculated MW:</b> 70aa, 8 kDa; 148aa, 16 kDa	
	<b>Observed MW:</b> 13-16 kDa	

## Applications

<b>Tested Applications:</b> WB, IHC, ELISA	<b>Positive Controls:</b>
<b>Species Specificity:</b> human, pig	<b>WB :</b> pig pancreas tissue, <b>IHC :</b> human pancreas tissue,
<b>Note-IHC: suggested antigen retrieval with TE buffer pH 9.0; (*) Alternatively, antigen retrieval may be performed with citrate buffer pH 6.0</b>	

## Background Information

PLA2G1B is a secreted member of the phospholipase A2 (PLA2) class of enzymes, which is produced by the pancreatic acinar cells. PLA2G1B catalyzes the hydrolysis of the sn-2 position of membrane glycerophospholipids to release arachidonic acid (AA) and lysophospholipids.

## Notable Publications

Author	Pubmed ID	Journal	Application
Yu-Qin Sun	40089736	J Neuroinflammation	

## Storage

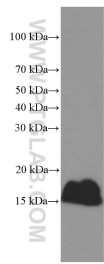
**Storage:**  
Store at -20°C. Stable for one year after shipment.  
**Storage Buffer:**  
PBS with 0.02% sodium azide and 50% glycerol, pH7.3  
**Aliquoting is unnecessary for -20°C storage**

\*\*\* 20ul sizes contain 0.1% BSA

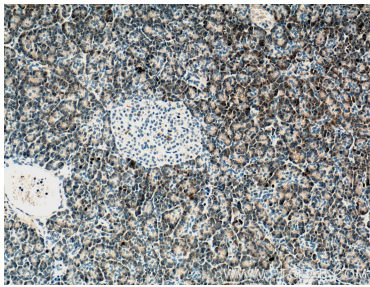
For technical support and original validation data for this product please contact:  
T: 1 (888) 4PTGLAB (1-888-478-4522) (toll free in USA), or 1(312) 455-8498 (outside USA)  
E: proteintech@ptglab.com  
W: ptglab.com

This product is exclusively available under Proteintech Group brand and is not available to purchase from any other manufacturer.

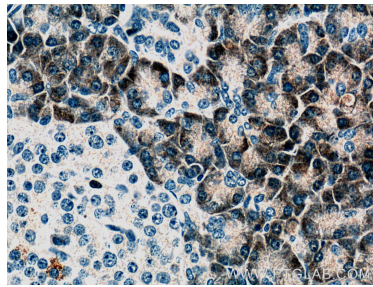
Selected Validation Data



pig pancreas tissue were subjected to SDS PAGE followed by western blot with 66397-1-Ig (PLA2G1B Antibody) at dilution of 1:3000 incubated at room temperature for 1.5 hours.



Immunohistochemical analysis of paraffin-embedded human pancreas tissue slide using 66397-1-Ig (PLA2G1B antibody) at dilution of 1:200 (under 10x lens).



Immunohistochemical analysis of paraffin-embedded human pancreas tissue slide using 66397-1-Ig (PLA2G1B antibody) at dilution of 1:200 (under 40x lens).