

For Research Use Only

Mesothelin Monoclonal antibody

Catalog Number: 66404-1-Ig **2 Publications**



Basic Information

Catalog Number: 66404-1-Ig	GenBank Accession Number: BC003512	Purification Method: Protein G purification
Size: 150ul , Concentration: 1500 ug/ml by Nanodrop and 1000 ug/ml by Bradford method using BSA as the standard;	GeneID (NCBI): 10232	CloneNo.: 2E3A4
Source: Mouse	UNIPROT ID: Q13421	Recommended Dilutions: WB: 1:500-1:2000 IHC: 1:50-1:500
Isotype: IgG1	Full Name: mesothelin	
Immunogen Catalog Number: AG23606	Calculated MW: 69 kDa	
	Observed MW: 69 kDa, 40 kDa	

Applications

Tested Applications: WB, IHC, ELISA	Positive Controls: WB : HeLa cells, SW 1990 cells, HGC-27 cells, MKN-45 cells IHC : human ovary tumor tissue,
Cited Applications: WB, IHC	
Species Specificity: human	
Cited Species: human	
Note-IHC: suggested antigen retrieval with TE buffer pH 9.0; (*) Alternatively, antigen retrieval may be performed with citrate buffer pH 6.0	

Background Information

Mesothelin (MSLN) is a 40kDa GPI-anchored surface glycoprotein that is expressed on pleural and peritoneal mesothelial cells, but not in other non-neoplastic tissues. The mesothelin gene encodes a 69-71kDa precursor protein that is processed to a 40kDa membrane-bound protein termed mesothelin and a 31kDa shed fragment called megakaryocyte-potentiating factor (MPF) that is released from the cell. Mesothelin is a tumor differentiation antigen present at low levels on a restricted set of normal adult tissues (e.g. mesothelium), and is expressed at high levels in mesotheliomas, as well as ovarian, pancreatic, and lung cancers. Mesothelin may be a new target for immunotherapy (PMID: 20922056, 18691948, 15217923).

Notable Publications

Author	Pubmed ID	Journal	Application
Yunfei Lu	40050872	J Transl Med	WB,IHC
Shengkai Xia	38570866	J Exp Clin Cancer Res	IHC

Storage

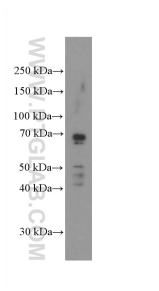
Storage:
Store at -20°C. Stable for one year after shipment.
Storage Buffer:
PBS with 0.02% sodium azide and 50% glycerol, pH7.3
Aliquoting is unnecessary for -20°C storage

*** 20ul sizes contain 0.1% BSA

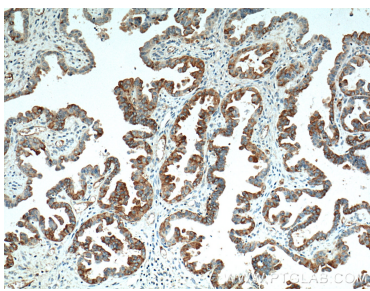
For technical support and original validation data for this product please contact:
T: 1 (888) 4PTGLAB (1-888-478-4522) (toll free in USA), or 1(312) 455-8498 (outside USA)
E: proteintech@ptglab.com
W: ptglab.com

This product is exclusively available under Proteintech Group brand and is not available to purchase from any other manufacturer.

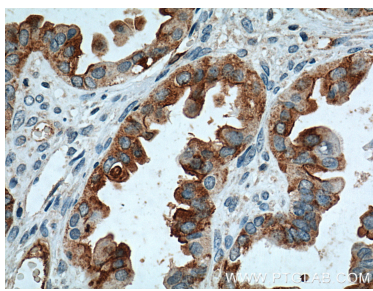
Selected Validation Data



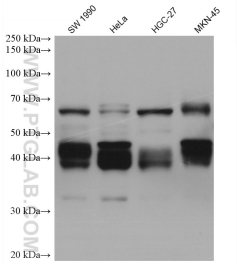
HeLa cells were subjected to SDS PAGE followed by western blot with 66404-1-Ig (Mesothelin antibody) at dilution of 1:1000 incubated at room temperature for 1.5 hours.



Immunohistochemical analysis of paraffin-embedded human ovary tumor tissue slide using 66404-1-Ig (Mesothelin antibody) at dilution of 1:200 (under 10x lens. Heat mediated antigen retrieval with Tris-EDTA buffer (pH 9.0).



Immunohistochemical analysis of paraffin-embedded human ovary tumor tissue slide using 66404-1-Ig (Mesothelin antibody) at dilution of 1:200 (under 40x lens. Heat mediated antigen retrieval with Tris-EDTA buffer (pH 9.0).



Various lysates were subjected to SDS PAGE followed by western blot with 66404-1-Ig (Mesothelin antibody) at dilution of 1:5000 incubated at room temperature for 1.5 hours.