

For Research Use Only

Alpha Synuclein Monoclonal antibody

Catalog Number: 66412-1-Ig **3 Publications**



Basic Information

Catalog Number: 66412-1-Ig	GenBank Accession Number: BC013293	Purification Method: Protein A purification
Size: 150ul , Concentration: 1400 ug/ml by Nanodrop and 1000 ug/ml by Bradford method using BSA as the standard;	GeneID (NCBI): 6622	CloneNo.: 1B10E9
Source: Mouse	UNIPROT ID: P37840	Recommended Dilutions: WB: 1:500-1:2000 IHC: 1:500-1:2000 IF-P: 1:200-1:800
Isotype: IgG2a	Full Name: synuclein, alpha (non A4 component of amyloid precursor)	
Immunogen Catalog Number: AG1285	Calculated MW: 14 kDa	
	Observed MW: 18-19 kDa	

Applications

Tested Applications: WB, IHC, IF-P, ELISA	Positive Controls: WB : mouse brain tissue, rat brain tissue
Cited Applications: IHC, IF	IHC : mouse cerebellum tissue, human brain tissue, mouse brain tissue
Species Specificity: human, mouse, rat	IF-P : mouse cerebellum tissue,
Cited Species: human, rat	
Note-IHC: suggested antigen retrieval with TE buffer pH 9.0; (*) Alternatively, antigen retrieval may be performed with citrate buffer pH 6.0	

Background Information

Alpha Synuclein (α -syn) is a 14-19 kDa phosphoprotein that is primarily localized to the presynaptic terminals of mature neurons, where it is involved in synaptic function and plasticity. α -syn has drawn intense interest ever since the late 1990s, when the first α -synuclein missense mutation was identified as a cause of familial Parkinson's disease (PD). Aggregated and hyper-phosphorylated forms of α -syn protein are the pathological hallmark of Lewy body disease, which includes Parkinson's disease (PD), diffuse Lewy body disease (DLBD), and Lewy body variant of Alzheimer's disease (LBV). This antibody can recognize all the isoforms of α -syn.

Notable Publications

Author	Pubmed ID	Journal	Application
Li-Hua Bian	35728354	Biomed Pharmacother	IHC
Jihua Shi	36795141	Appl Microbiol Biotechnol	IF
Wenfeng Liu	31750928	J Neuropathol Exp Neurol	IHC

Storage

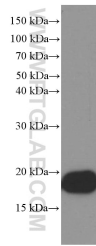
Storage:
Store at -20°C. Stable for one year after shipment.
Storage Buffer:
PBS with 0.02% sodium azide and 50% glycerol, pH7.3
Aliquoting is unnecessary for -20°C storage

*** 20ul sizes contain 0.1% BSA

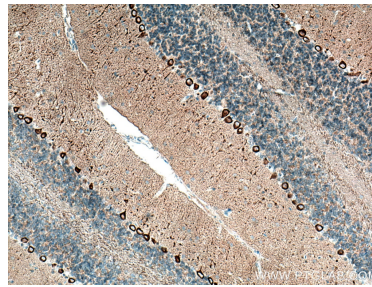
For technical support and original validation data for this product please contact:
T: 1 (888) 4PTGLAB (1-888-478-4522) (toll free in USA), or 1(312) 455-8498 (outside USA)
E: proteintech@ptglab.com
W: ptglab.com

This product is exclusively available under Proteintech Group brand and is not available to purchase from any other manufacturer.

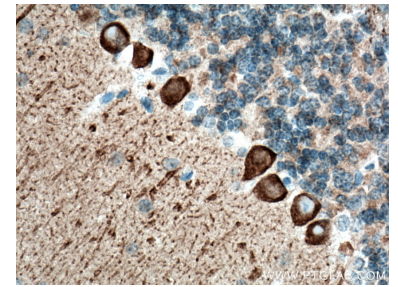
Selected Validation Data



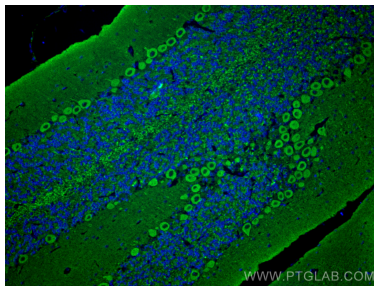
mouse brain tissue were subjected to SDS PAGE followed by western blot with 66412-1-Ig (α-Synuclein Antibody) at dilution of 1:1000 incubated at room temperature for 1.5 hours.



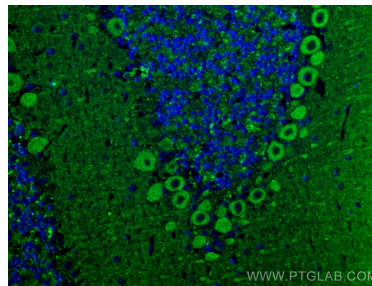
Immunohistochemical analysis of paraffin-embedded mouse cerebellum tissue slide using 66412-1-Ig (alpha-Synuclein antibody) at dilution of 1:1000 (under 10x lens). Heat mediated antigen retrieval with Tris-EDTA buffer (pH 9.0).



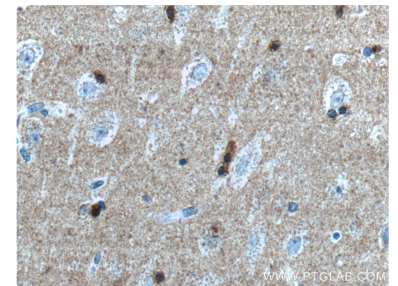
Immunohistochemical analysis of paraffin-embedded mouse cerebellum tissue slide using 66412-1-Ig (alpha-Synuclein antibody) at dilution of 1:1000 (under 40x lens). Heat mediated antigen retrieval with Tris-EDTA buffer (pH 9.0).



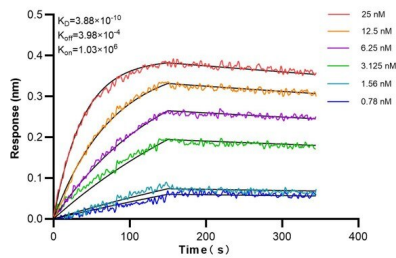
Immunofluorescent analysis of (4% PFA) fixed paraffin-embedded mouse cerebellum tissue using Alpha Synuclein antibody (66412-1-Ig, Clone: 1B10E9) at dilution of 1:400 and Multi-rAb CoraLite® Plus 488-Goat Anti-Mouse Recombinant Secondary Antibody (H+L) (RGAM002). Heat mediated antigen retrieval with Tris-EDTA buffer (pH 9.0).



Immunofluorescent analysis of (4% PFA) fixed paraffin-embedded mouse cerebellum tissue using Alpha Synuclein antibody (66412-1-Ig, Clone: 1B10E9) at dilution of 1:400 and Multi-rAb CoraLite® Plus 488-Goat Anti-Mouse Recombinant Secondary Antibody (H+L) (RGAM002). Heat mediated antigen retrieval with Tris-EDTA buffer (pH 9.0).



Immunohistochemical analysis of paraffin-embedded human brain tissue slide using 66412-1-Ig (α-Synuclein antibody) at dilution of 1:500 (under 40x lens). Heat mediated antigen retrieval with Tris-EDTA buffer (pH 9.0).



Biolayer interferometry (BLI) kinetic assays of 66412-1-Ig against Human SNCA were performed. The affinity constant is 0.388 nM.