

For Research Use Only

LDHB Monoclonal antibody

Catalog Number: 66425-1-Ig **7 Publications**



Basic Information

Catalog Number: 66425-1-Ig	GenBank Accession Number: BC002362	Purification Method: Protein G purification
Size: 150ul , Concentration: 1000 ug/ml by Nanodrop;	GeneID (NCBI): 3945	CloneNo.: 5E9G1
Source: Mouse	UNIPROT ID: P07195	Recommended Dilutions: WB 1:20000-1:100000 IHC 1:16000-1:64000 IF/ICC 1:50-1:500
Isotype: IgG1	Full Name: lactate dehydrogenase B	
Immunogen Catalog Number: AG6605	Calculated MW: 36 kDa	
	Observed MW: 35 kDa	

Applications

Tested Applications: WB, IHC, IF/ICC, ELISA	Positive Controls: WB : HEK-293 cells, PC-12 cells, Neuro-2a cells, pig brain tissue, rat brain tissue, mouse brain tissue, rabbit brain tissue, mouse cerebellum tissue, rat cerebellum tissue IHC : mouse heart tissue, IF/ICC : HeLa cells,
Cited Applications: WB, IF, CoIP	
Species Specificity: human, mouse, rat, pig	
Cited Species: human, mouse, rat	
Note-IHC: suggested antigen retrieval with TE buffer pH 9.0; (*) Alternatively, antigen retrieval may be performed with citrate buffer pH 6.0	

Background Information

LDHB, also named as LDH-H and NY-REN-46, belongs to the LDH/MDH superfamily. And LDH family. It is an enzyme which catalyzes the reversible conversion of lactate and pyruvate, and NAD and NADH, in the glycolytic pathway. It is glycolytic enzymes and it is positively regulated by mTOR.

Notable Publications

Author	Pubmed ID	Journal	Application
Wen-Qi Ma	33203874	Cell Death Dis	WB,IF
Yang Zhou	35530138	Acta Pharm Sin B	WB
Shiyi He	36013411	Life (Basel)	WB

Storage

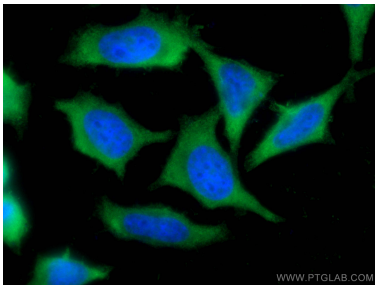
Storage:
Store at -20°C. Stable for one year after shipment.
Storage Buffer:
PBS with 0.02% sodium azide and 50% glycerol, pH7.3
Aliquoting is unnecessary for -20°C storage

*** 20ul sizes contain 0.1% BSA

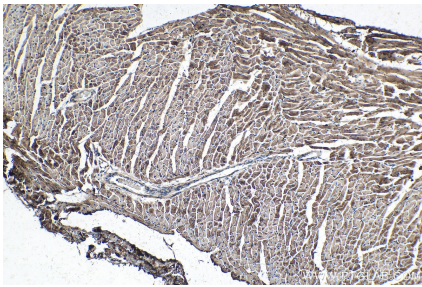
For technical support and original validation data for this product please contact:
T: 1 (888) 4PTGLAB (1-888-478-4522) (toll free in USA), or 1(312) 455-8498 (outside USA)
E: proteintech@ptglab.com
W: ptglab.com

This product is exclusively available under Proteintech Group brand and is not available to purchase from any other manufacturer.

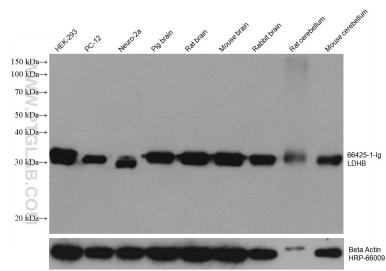
Selected Validation Data



Immunofluorescent analysis of (-20°C Ethanol) fixed HeLa cells using 66425-1-Ig (LDHB antibody), at dilution of 1:200 and CoraLite®488-Conjugated AffiniPure Goat Anti-Mouse IgG(H+L).



Immunohistochemical analysis of paraffin-embedded mouse heart tissue slide using 66425-1-Ig (LDHB antibody) at dilution of 1:32000 (under 10x lens). Heat mediated antigen retrieval with Tris-EDTA buffer (pH 9.0).



Various lysates were subjected to SDS PAGE followed by western blot with 66425-1-Ig (LDHB antibody) at dilution of 1:50000 incubated at room temperature for 1.5 hours. The membrane was stripped and reblotted with HRP-conjugated Beta Actin Monoclonal antibody (HRP-66009) as loading control.