

For Research Use Only

PEBP1 Monoclonal antibody

Catalog Number: 66438-1-Ig **1 Publications**



Basic Information

Catalog Number: 66438-1-Ig	GenBank Accession Number: BC008714	Purification Method: Protein G purification
Size: 150ul , Concentration: 1200 ug/ml by Nanodrop and 1000 ug/ml by Bradford method using BSA as the standard;	GeneID (NCBI): 5037	CloneNo.: 2D4D11
Source: Mouse	UNIPROT ID: P30086	Recommended Dilutions: WB: 1:1000-1:6000 IHC: 1:50-1:500 FC (Intra): 0.40 ug per 10 ⁶ cells in a 100 µl suspension
Isotype: IgG1	Full Name: phosphatidylethanolamine binding protein 1	
Immunogen Catalog Number: AG0864	Calculated MW: 21 kDa	
	Observed MW: 23-27 kDa	

Applications

Tested Applications: WB, IHC, FC (Intra), ELISA	Positive Controls: WB : fetal human brain tissue, Neuro-2a cells, PC-12 cells, rat brain tissue IHC : human prostate cancer tissue, FC (Intra) : PC-12 cells,
Cited Applications: WB, IHC	
Species Specificity: human, mouse, rat	
Cited Species: mouse	
Note-IHC: suggested antigen retrieval with TE buffer pH 9.0; (*) Alternatively, antigen retrieval may be performed with citrate buffer pH 6.0	

Background Information

Raf kinase inhibitor protein (RKIP), also termed phosphatidylethanolamine binding protein PEBP1, was initially identified as a potent inhibitor of Raf-1/MEK/ERK, NF-κB, and G-protein-coupled receptor signaling pathways. Later RKIP has been further identified as a metastasis suppressor and its loss of expression has been reported in various cancers. Its expression has been proposed as a prognostic marker for patients diagnosed with the above cancers.

Notable Publications

Author	Pubmed ID	Journal	Application
Ling Kan Chi	38882385	Heliyon	WB,IHC

Storage

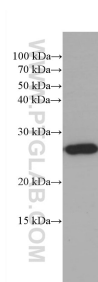
Storage:
Store at -20°C. Stable for one year after shipment.
Storage Buffer:
PBS with 0.02% sodium azide and 50% glycerol, pH7.3
Aliquoting is unnecessary for -20°C storage

*** 20ul sizes contain 0.1% BSA

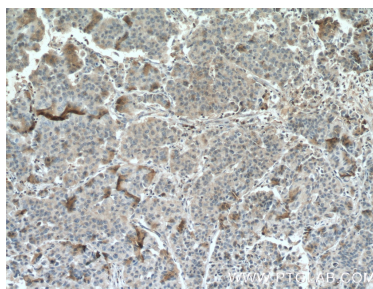
For technical support and original validation data for this product please contact:
T: 1 (888) 4PTGLAB (1-888-478-4522) (toll free in USA), or 1(312) 455-8498 (outside USA)
E: proteintech@ptglab.com
W: ptglab.com

This product is exclusively available under Proteintech Group brand and is not available to purchase from any other manufacturer.

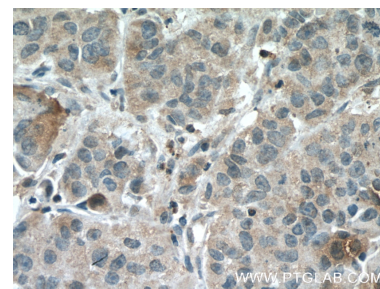
Selected Validation Data



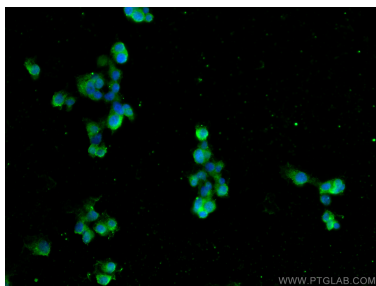
fetal human brain tissue were subjected to SDS PAGE followed by western blot with 66438-1-Ig (PEBP1 Antibody) at dilution of 1:3000 incubated at room temperature for 1.5 hours.



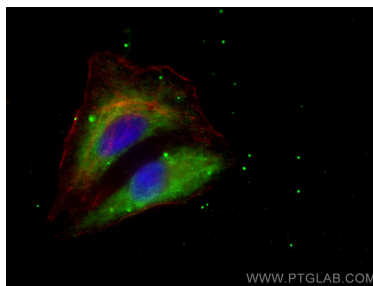
Immunohistochemical analysis of paraffin-embedded human prostate cancer tissue slide using 66438-1-Ig (PEBP1 Antibody) at dilution of 1:500 (under 10x lens), proteolytic pre-treatment mediated antigen retrieved with Tris-EDTA buffer (pH9).



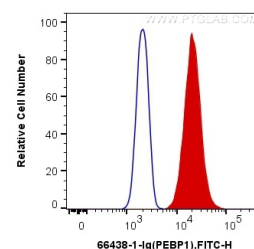
Immunohistochemical analysis of paraffin-embedded human prostate cancer tissue slide using 66438-1-Ig (PEBP1 Antibody) at dilution of 1:500 (under 40x lens), proteolytic pre-treatment mediated antigen retrieved with Tris-EDTA buffer (pH9).



Immunofluorescent analysis of (4% PFA) fixed PC-12 cells using PEBP1 antibody (66438-1-Ig, Clone: 2D4D11) at dilution of 1:400 and CoraLite®488-Conjugated Goat Anti-Mouse IgG(H+L).



Immunofluorescent analysis of (-20°C Ethanol) fixed A549 cells using PEBP1 antibody (66438-1-Ig, Clone: 2D4D11) at dilution of 1:400 and CoraLite®488-Conjugated Goat Anti-Mouse IgG(H+L), CL594-Phalloidin (red).



1X10⁶ PC-12 cells were intracellularly stained with 0.4 ug Anti-Human PEBP1 (66438-1-Ig, Clone:2D4D11) and CoraLite®488-Conjugated Goat Anti-Mouse IgG(H+L) at dilution 1:1000 (red), or 0.4 ug Control Antibody. Cells were fixed with 4% PFA and permeabilized with Flow Cytometry Perm Buffer (PF00011-C).