

For Research Use Only

Gamma Catenin Monoclonal antibody

Catalog Number: 66445-1-Ig **3 Publications**



Basic Information

Catalog Number: 66445-1-Ig	GenBank Accession Number: BC011865	Purification Method: Protein G purification
Size: 150ul , Concentration: 1600 ug/ml by Nanodrop and 1000 ug/ml by Bradford method using BSA as the standard;	GeneID (NCBI): 3728	CloneNo.: 1A5D10
Source: Mouse	UNIPROT ID: P14923	Recommended Dilutions: WB: 1:1000-1:4000 IHC: 1:1000-1:4000 IF/ICC: 1:200-1:800
Isotype: IgG1	Full Name: junction plakoglobin	
Immunogen Catalog Number: AG1627	Calculated MW: 82 kDa	
	Observed MW: 82 kDa	

Applications

Tested Applications: WB, IHC, IF/ICC, ELISA	Positive Controls: WB : human heart tissue, A431 cells, HT-29 cells, MDCK cells, rat heart tissue, T-47D cells IHC : human breast cancer tissue, human skin tissue, human stomach cancer tissue, mouse stomach tissue, rat stomach tissue IF/ICC : A431 cells, MCF-7 cells
Cited Applications: WB, IF	
Species Specificity: human, mouse, rat, pig, canine	
Cited Species: human	
Note-IHC: suggested antigen retrieval with TE buffer pH 9.0; (*) Alternatively, antigen retrieval may be performed with citrate buffer pH 6.0	

Background Information

Plakoglobin (γ -catenin), a member of the Armadillo proteins, plays important roles in cell adhesion with α -catenin and β -catenin, is involved in Wnt signaling, and is translocated into the nucleus and binds LEF1. Plakoglobin is a major cytoplasmic component of both desmosomes and adherens junctions, and is the only known constituent common to submembranous plaques in both of these structures, which are located at the intercalated disc (ICD) of cardiomyocytes. Plakoglobin links cadherins to the actin cytoskeleton. Mutations in plakoglobin are associated with arrhythmogenic right ventricular dysplasia and Pemphigus vulgaris.

Notable Publications

Author	Pubmed ID	Journal	Application
Chao Sun	36120591	Oxid Med Cell Longev	WB
Arni Asbjarnarson	40076911	Int J Mol Sci	IF
Chao Sun	37421607	Aging (Albany NY)	WB

Storage

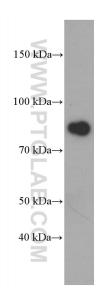
Storage:
Store at -20°C. Stable for one year after shipment.
Storage Buffer:
PBS with 0.02% sodium azide and 50% glycerol, pH7.3
Aliquoting is unnecessary for -20°C storage

*** 20ul sizes contain 0.1% BSA

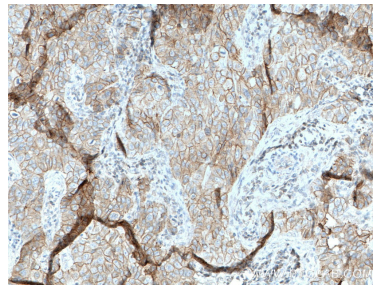
For technical support and original validation data for this product please contact:
T: 1 (888) 4PTGLAB (1-888-478-4522) (toll free in USA), or 1(312) 455-8498 (outside USA)
E: proteintech@ptglab.com
W: ptglab.com

This product is exclusively available under Proteintech Group brand and is not available to purchase from any other manufacturer.

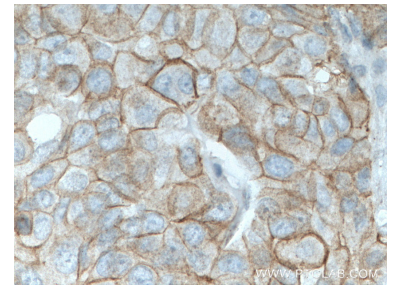
Selected Validation Data



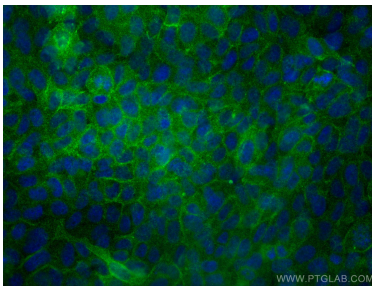
human heart tissue were subjected to SDS PAGE followed by western blot with 66445-1-Ig (Plakoglobin/gamma catenin antibody at dilution of 1:2000 incubated at room temperature for 1.5 hours.



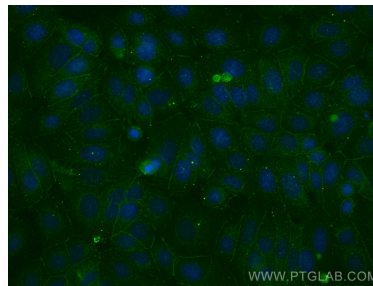
Immunohistochemical analysis of paraffin-embedded human breast cancer tissue slide using 66445-1-Ig (gamma catenin antibody) at dilution of 1:2000 (under 10x lens. Heat mediated antigen retrieval with Tris-EDTA buffer (pH 9.0).



Immunohistochemical analysis of paraffin-embedded human breast cancer tissue slide using 66445-1-Ig (gamma catenin antibody) at dilution of 1:2000 (under 40x lens. Heat mediated antigen retrieval with Tris-EDTA buffer (pH 9.0).



Immunofluorescent analysis of (4% PFA) fixed A431 cells using Gamma Catenin antibody (66445-1-Ig, Clone: 1A5D10) at dilution of 1:400 and CoraLite®488-Conjugated AffiniPure Goat Anti-Mouse IgG(H+L).



Immunofluorescent analysis of (-20°C Methanol) fixed MCF-7 cells using Gamma Catenin antibody (66445-1-Ig, Clone: 1A5D10) at dilution of 1:400 and CoraLite®488-Conjugated AffiniPure Goat Anti-Mouse IgG(H+L).