

For Research Use Only

EZH2 Monoclonal antibody

Catalog Number: 66476-1-Ig

Featured Product

9 Publications



Basic Information

Catalog Number:

66476-1-Ig

Size:

150ul, Concentration: 1000 ug/ml by Nanodrop and 545 ug/ml by Bradford method using BSA as the standard;

Source:

Mouse

Isotype:

IgG1

Immunogen Catalog Number:

AG16789

GenBank Accession Number:

BC010858

GeneID (NCBI):

2146

UNIPROT ID:

Q15910

Full Name:

enhancer of zeste homolog 2 (Drosophila)

Calculated MW:

751 aa, 86 kDa

Observed MW:

90-102 kDa

Purification Method:

Protein G purification

CloneNo.:

1F10A12

Recommended Dilutions:

WB: 1:5000-1:20000

FC (Intra): 0.20 ug per 10⁶ cells in a 100 µl suspension

Applications

Tested Applications:

WB, FC (Intra), ELISA

Cited Applications:

WB, IHC, IF

Species Specificity:

human, mouse, rat

Cited Species:

human, mouse

Positive Controls:

WB : HEK-293 cells, A549 cells, Jurkat cells, ROS1728 cells, NIH/3T3 cells, 4T1 cells, A431 cells, PC-3 cells, DU145 cells

FC (Intra) : HepG2 cells,

Background Information

EZH2 (enhancer of zeste homologue 2, also known as KMT6) is a member of Polycomb group (PcG) family and encodes a histone methyl transferase that has an essential role in promoting histone H3 lysine 27 trimethylation (H3K27me3) and epigenetic gene silencing. EZH2 is important for cell proliferation and inhibition of cell differentiation, and is implicated in cancer progression. Overexpression of EZH2 is a marker of advanced and metastatic disease in many solid tumors, including prostate and breast cancer. This antibody detected EZH2 protein as a single band with a molecular weight (MW) of 91-100 kDa in multiple cell lines. The phosphorylation may result in the higher molecular weight (calculated MW as 80-86 kDa). (20935635, 21367748)

Notable Publications

| Author | Pubmed ID | Journal | Application |
|-----------------|-----------|---------------------|-------------|
| Nicholas Marano | 36274837 | Front Cell Dev Biol | WB |
| Longyang Jin | 30282996 | Cell Death Dis | WB |
| Ji Wang | 36479622 | Cancer Med | WB |

Storage

Storage:

Store at -20°C. Stable for one year after shipment.

Storage Buffer:

PBS with 0.02% sodium azide and 50% glycerol, pH7.3

Aliquoting is unnecessary for -20°C storage

*** 20ul sizes contain 0.1% BSA

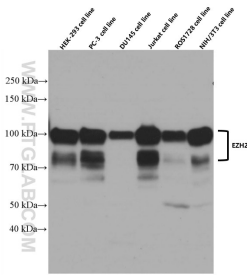
For technical support and original validation data for this product please contact:

T: 1 (888) 4PTGLAB (1-888-478-4522) (toll free in USA), or 1(312) 455-8498 (outside USA)

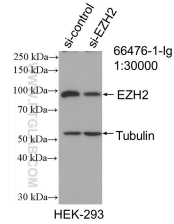
E: proteintech@ptglab.com
W: ptglab.com

This product is exclusively available under Proteintech Group brand and is not available to purchase from any other manufacturer.

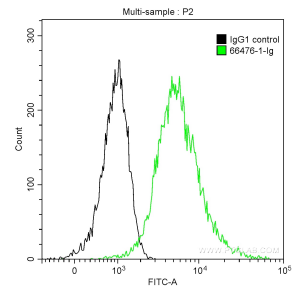
Selected Validation Data



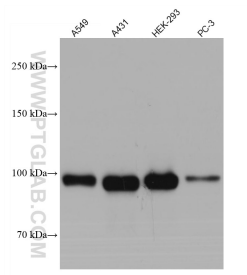
Various cell lines were subjected to SDS PAGE followed by western blot with 66476-1-Ig (EZH2 antibody) at dilution of 1:10000 incubated at room temperature for 1.5 hours.



WB result of EZH2 antibody (66476-1-Ig; 1:30000; incubated at room temperature for 1.5 hours) with sh-Control and sh-EZH2 transfected HEK-293 cells.



1X10⁶ HepG2 cells were intracellularly stained with 0.2 ug Anti-Human EZH2 (66476-1-Ig, Clone:1F10A12) and CoraLite®488-Conjugated AffiniPure Goat Anti-Mouse IgG(H+L) at dilution 1:1000 (green), and 0.2 ug Mouse IgG1 Isotype Control (66360-1-Ig, Clone: T1F8D3F10) (black). Cells were fixed with 4% PFA and permeabilized with 0.1% TritonX-100.



Various lysates were subjected to SDS PAGE followed by western blot with 66476-1-Ig (EZH2 antibody) at dilution of 1:10000 incubated at room temperature for 1.5 hours.