

For Research Use Only

# RhoGDI Monoclonal ANTIBODY



Catalog Number: 66480-1-Ig **Featured Product**

## Basic Information

<b>Catalog Number:</b> 66480-1-Ig	<b>GenBank Accession Number:</b> BC005851	<b>Purification Method:</b> Protein A purification
<b>Size:</b> 150UL, Concentration: 1500 µg/ml by 396 Bradford method using BSA as the standard;	<b>GeneID (NCBI):</b> 396	<b>CloneNo.:</b> 1B1G9
<b>Source:</b> Mouse	<b>Full Name:</b> Rho GDP dissociation inhibitor (GDI) alpha	<b>Recommended Dilutions:</b> WB 1:500-1:3000
<b>Isotype:</b> IgG2a	<b>Calculated MW:</b> 28 kDa	
<b>Immunogen Catalog Number:</b> AG0791	<b>Observed MW:</b> 29 kDa	

## Applications

<b>Tested Applications:</b> WB, ELISA	<b>Positive Controls:</b> WB: HeLa cells, C6 cells, HEK-293 cells
<b>Species Specificity:</b> Human, Mouse, Rat	

## Background Information

Rho GDP-dissociation inhibitor (RhoGDI), also called ARHGDI, is one member of ARHGDI, which is ubiquitously expressed and interacts with several Rho GTPases, mainly including RhoA, Rac1, and Cdc42. RhoGDI can inhibit nucleotide exchange and membrane association to downregulate the activities of Rho family GTPase. It is overexpressed in various human cancers. Activity of this protein is important in a variety of cellular processes, and it is overexpressed in various human cancers. Mutations in RhoGDI have been found in individuals with nephrotic syndrome, type 8.

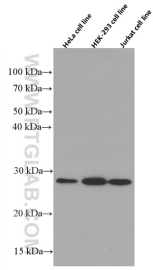
## Storage

**Storage:**  
Store at -20°C. Stable for one year after shipment.  
**Storage Buffer:**  
PBS with 0.1% sodium azide and 50% glycerol pH 7.3.  
Aliquoting is unnecessary for -20°C storage

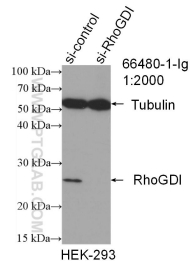
For technical support and original validation data for this product please contact:  
T: 1 (888) 4PTGLAB (1-888-478-4522) (toll free in USA), or 1(312) 455-8498 (outside USA)  
E: proteintech@ptglab.com  
W: ptglab.com

**This product is exclusively available under Proteintech Group brand and is not available to purchase from any other manufacturer.**

## Selected Validation Data



Various lysates were subjected to SDS PAGE followed by western blot with 66480-1-Ig (ARHGDI $\alpha$ GDI antibody) at dilution of 1:1500 incubated at room temperature for 1.5 hours.



WB result of RhoGDI antibody (66480-1-Ig; 1:2000; incubated at room temperature for 1.5 hours) with sh-Control and sh-RhoGDI transfected HEK-293 cells.