

For Research Use Only

MDH1 Monoclonal ANTIBODY



Catalog Number: 66505-1-Ig **Featured Product**

Basic Information

Catalog Number: 66505-1-Ig	GenBank Accession Number: BC001484	Purification Method: Protein G purification
Size: 150UL, Concentration: 1000 µg/ml by 4190 Bradford method using BSA as the standard;	GeneID (NCBI): 4190	CloneNo.: 1F9A2
Source: Mouse	Full Name: malate dehydrogenase 1, NAD (soluble)	Recommended Dilutions: WB 1:2000-1:10000 IF 1:50-1:500
Isotype: IgG1	Calculated MW: 334 aa, 36 kDa	
Immunogen Catalog Number: AG8744	Observed MW: 36-37 kDa	

Applications

Tested Applications: IF, WB, ELISA	Positive Controls:
Species Specificity: Human, mouse	WB: HeLa cells, HEK-293 cells, NIH/3T3 cells, RAW 264.7 cells, Jurkat cells
	IF: HepG2 cells,

Background Information

MDH1 (Malate dehydrogenase, cytoplasmic) is also named as MDHA and belongs to the LDH/MDH superfamily and MDH type 2 family which catalyzes the reversible oxidation of malate to oxaloacetate, utilizing the NAD/NADH cofactor system in the citric acid cycle. It can exist as a dimer and the dimeric MDH1 is the mitochondrial isoenzyme, whereas the tetrameric MDH2 is the glycosomal isoenzyme. (PMID:10693743)

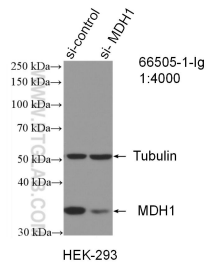
Storage

Storage:
Store at -20°C. Stable for one year after shipment.
Storage Buffer:
PBS with 0.1% sodium azide and 50% glycerol pH 7.3.
Aliquoting is unnecessary for -20°C storage

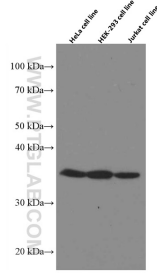
For technical support and original validation data for this product please contact:
T: 1 (888) 4PTGLAB (1-888-478-4522) (toll free in USA), or 1(312) 455-8498 (outside USA)
E: proteintech@ptglab.com
W: ptglab.com

This product is exclusively available under Proteintech Group brand and is not available to purchase from any other manufacturer.

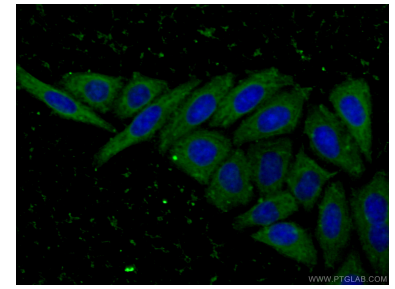
Selected Validation Data



WB result of MDH1 antibody (66505-1-Ig; 1:4000; incubated at room temperature for 1.5 hours) with sh-Control and sh-MDH1 transfected HEK-293 cells.



Various lysates were subjected to SDS PAGE followed by western blot with 66505-1-Ig (MDH1 antibody) at dilution of 1:5000 incubated at room temperature for 1.5 hours.



Immunofluorescent analysis of (-20°C Ethanol) fixed HepG2 cells using 66505-1-Ig (MDH1 antibody) at dilution of 1:100 and CoraLite488-Conjugated AffiniPure Goat Anti-Mouse IgG(H+L).