

For Research Use Only

# PYCR1 Monoclonal ANTIBODY



Catalog Number: 66510-1-Ig

## Basic Information

<b>Catalog Number:</b> 66510-1-Ig	<b>GenBank Accession Number:</b> BC022244	<b>Purification Method:</b> Protein A purification
<b>Size:</b> 150UL, Concentration: 1000 µg/ml by Bradford method using BSA as the standard;	<b>GeneID (NCBI):</b> 5831	<b>CloneNo.:</b> 1H2G1
<b>Source:</b> Mouse	<b>Full Name:</b> pyrroline-5-carboxylate reductase 1	<b>Recommended Dilutions:</b> WB 1:1000-1:6000
<b>Isotype:</b> IgG2a	<b>Calculated MW:</b> 319 aa, 33, 8 kDa	
<b>Immunogen Catalog Number:</b> AG17919	<b>Observed MW:</b> 33 kDa, 35 kDa	

## Applications

<b>Tested Applications:</b> WB, ELISA	<b>Positive Controls:</b> WB: HeLa cells,
<b>Species Specificity:</b> Human, mouse, rat	

## Background Information

PYCR1, also named as P5CR1, belongs to the pyrroline-5-carboxylate reductase family. It is a housekeeping enzyme that catalyzes the last step in proline biosynthesis. PYCR1 can utilize both NAD and NADP, but has higher affinity for NAD. It is involved in the cellular response to oxidative stress. Mutation in PYCR1 will cause ARCL type II (ARCL2B). Some mutation will cause DeBary syndrome (DBS) which is characterized by progeroid features, ophthalmological abnormalities, intrauterine growth retardation, and cutis laxa.

## Storage

**Storage:**  
Store at -20°C. Stable for one year after shipment.  
**Storage Buffer:**  
PBS with 0.1% sodium azide and 50% glycerol pH 7.3.  
Aliquoting is unnecessary for -20°C storage

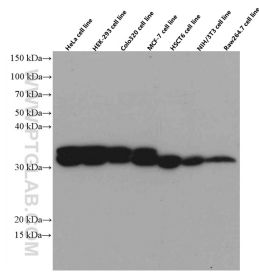
For technical support and original validation data for this product please contact:

T: 1 (888) 4PTGLAB (1-888-478-4522) (toll free in USA), or 1(312) 455-8498 (outside USA)

E: [proteintech@ptglab.com](mailto:proteintech@ptglab.com)  
W: [ptglab.com](http://ptglab.com)

This product is exclusively available under Proteintech Group brand and is not available to purchase from any other manufacturer.

## Selected Validation Data



Various lysates were subjected to SDS PAGE followed by western blot with 66510-1-Ig (PYCR1 antibody) at dilution of 1:3000 incubated at room temperature for 1 hour.