

For Research Use Only

# E2F1 Monoclonal antibody

Catalog Number: 66515-1-Ig

Featured Product

12 Publications



## Basic Information

**Catalog Number:**

66515-1-Ig

**GenBank Accession Number:**

BC050369

**Purification Method:**

Protein A purification

**Size:**

150ul, Concentration: 1000 µg/ml by Bradford method using BSA as the standard;

**GeneID (NCBI):**

1869

**CloneNo.:**

5D7G8

**Source:**

Mouse

**Full Name:**

E2F transcription factor 1

**Recommended Dilutions:**

WB 1:1000-1:6000

**Isotype:**

IgG2b

**Calculated MW:**

437 aa, 47 kDa

**Observed MW:**

55-60 kDa

**Immunogen Catalog Number:**

AG17363

## Applications

**Tested Applications:**

WB, ELISA

**Positive Controls:**

WB: LNCaP cells, HeLa cells

**Cited Applications:**

ChIP, IF, IP, WB

**Species Specificity:**

Human, mouse, rat

**Cited Species:**

human, mouse

## Background Information

Transcription factor E2F1 (E2F1), also known as RBBP3, is a transcription activator that binds DNA cooperatively with dp proteins through the E2 recognition site, 5'-TTTC[CG]CGC-3' found in the promoter region of a number of genes whose products are involved in cell cycle regulation or in DNA replication. The DRTF1/E2F complex functions in the control of cell-cycle progression from G1 to S phase. E2F-1 binds preferentially RB1 protein, in a cell-cycle dependent manner. It can mediate both cell proliferation and p53-dependent apoptosis. The calculated molecular weight of E2F1 is 47 kDa, but the sumoylated E2F1 is about 55-60 kDa.

## Notable Publications

Author	Pubmed ID	Journal	Application
Peng Zhang	34659533	J Cancer	WB
Chieh-Hsin Chen	34708319	Apoptosis	WB
Qirui Ding	34786046	Am J Transl Res	WB

## Storage

**Storage:**

Store at -20°C. Stable for one year after shipment.

**Storage Buffer:**

PBS with 0.02% sodium azide and 50% glycerol pH 7.3.

Aliquoting is unnecessary for -20°C storage

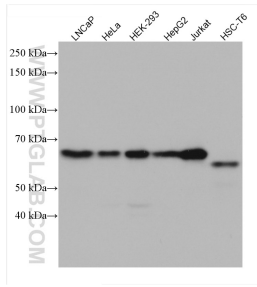
For technical support and original validation data for this product please contact:

T: 1 (888) 4PTGLAB (1-888-478-4522) (toll free in USA), or 1(312) 455-8498 (outside USA)

E: [proteintech@ptglab.com](mailto:proteintech@ptglab.com)  
W: [ptglab.com](http://ptglab.com)

This product is exclusively available under Proteintech Group brand and is not available to purchase from any other manufacturer.

## Selected Validation Data



Various lysates were subjected to SDS PAGE followed by western blot with 66515-1-Ig (E2F1 antibody) at dilution of 1:3000 incubated at room temperature for 1.5 hours.