

For Research Use Only

# Recoverin Monoclonal ANTIBODY



Catalog Number: 66521-1-Ig

## Basic Information

Catalog Number:

66521-1-Ig

Size:

150UL, Concentration: 1000 µg/ml by 5957

Bradford method using BSA as the standard;

Source:

Mouse

Isotype:

IgG1

Immunogen Catalog Number:

AG0119

GenBank Accession Number:

BC001720

GeneID (NCBI):

5957

Full Name:

recoverin

Calculated MW:

24 kDa

Observed MW:

23 kDa

Purification Method:

Protein G purification

CloneNo.:

3B8E8

Recommended Dilutions:

WB 1:2500-1:10000

## Applications

Tested Applications:

WB, ELISA

Species Specificity:

Human, rat, pig, mouse

Positive Controls:

WB: pig retina tissue, rat retina tissue

## Background Information

Recoverin, belonging to a family of the neuronal calcium sensor (NCS) proteins, has a restricted expression in retinal photoreceptors or neurons or neuroendocrine cells. It has been suggested to play a role in light and dark adaptation by regulating rhodopsin phosphorylation. Recently, it has been found that autoantibodies against recoverin (24 kDa) have been strongly associated with cancer-associated retinopathy (CAR) syndrome, a paraneoplastic disease of the retina. But functions of recoverin in cancer cells remain unknown.

## Storage

Storage:

Store at -20°C. Stable for one year after shipment.

Storage Buffer:

PBS with 0.1% sodium azide and 50% glycerol pH 7.3.

Aliquoting is unnecessary for -20°C storage

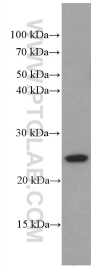
For technical support and original validation data for this product please contact:

T: 1 (888) 4PTGLAB (1-888-478-4522) (toll free in USA), or 1(312) 455-8498 (outside USA)

E: [proteintech@ptglab.com](mailto:proteintech@ptglab.com)  
W: [ptglab.com](http://ptglab.com)

**This product is exclusively available under Proteintech Group brand and is not available to purchase from any other manufacturer.**

## Selected Validation Data



pig retina tissue were subjected to SDS PAGE followed by western blot with 66521-1-Ig (Recoverin antibody) at dilution of 1:5000 incubated at room temperature for 1.5 hours.