

For Research Use Only

# AP5Z1/SPG48 Monoclonal antibody

Catalog Number: 66533-1-Ig



## Basic Information

**Catalog Number:**

66533-1-Ig

**Size:**

150ul, Concentration: 700 µg/ml by Bradford method using BSA as the standard;

**Source:**

Mouse

**Isotype:**

IgG1

**Immunogen Catalog Number:**

AG26961

**GenBank Accession Number:**

BC037399

**GeneID (NCBI):**

9907

**Full Name:**

KIAA0415

**Calculated MW:**

807 aa, 88 kDa

**Observed MW:**

88 kDa, 160 kDa

**Purification Method:**

Protein G purification

**CloneNo.:**

1G1D7

**Recommended Dilutions:**

WB 1:1000-1:5000

IHC 1:50-1:500

IF 1:50-1:500

## Applications

**Tested Applications:**

IF, IHC, WB, ELISA

**Species Specificity:**

Human, rat

**Note-IHC: suggested antigen retrieval with TE buffer pH 9.0; (\*) Alternatively, antigen retrieval may be performed with citrate buffer pH 6.0**

**Positive Controls:**

WB : Jurkat cells,

IHC : human kidney tissue,

IF : HEK-293 cells,

## Background Information

AP5Z1, also known as SPG48 and KIAA0415, is a part of AP-5. Biallelic mutations in the AP5Z1 gene encoding the AP5Z1 subunit have been described in a small number of patients with hereditary spastic paraplegia (HSP). AP5Z1 physically interacts with other HSP proteins and that patient cells are sensitive to DNA damaging drugs.

## Storage

**Storage:**

Store at -20°C. Stable for one year after shipment.

**Storage Buffer:**

PBS with 0.02% sodium azide and 50% glycerol pH 7.3.

Aliquoting is unnecessary for -20°C storage

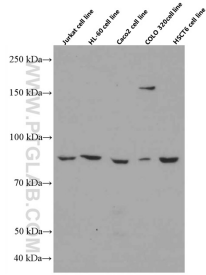
For technical support and original validation data for this product please contact:

T: 1 (888) 4PTGLAB (1-888-478-4522) (toll free in USA), or 1(312) 455-8498 (outside USA)

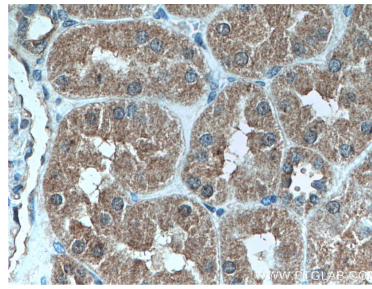
E: [proteintech@ptglab.com](mailto:proteintech@ptglab.com)  
W: [ptglab.com](http://ptglab.com)

**This product is exclusively available under Proteintech Group brand and is not available to purchase from any other manufacturer.**

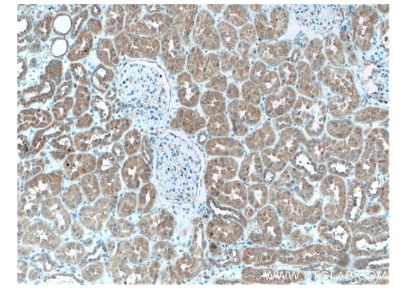
## Selected Validation Data



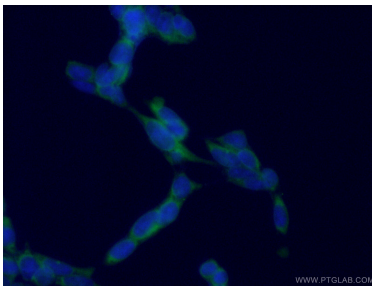
Various lysates were subjected to SDS PAGE followed by western blot with 66533-1-Ig (Zeta5 antibody) at dilution of 1:4000 incubated at room temperature for 1.5 hours.



Immunohistochemical analysis of paraffin-embedded human kidney tissue slide using 66533-1-Ig (AP5Z1/SPG48 antibody) at dilution of 1:200 (under 40x lens).



Immunohistochemical analysis of paraffin-embedded human kidney tissue slide using 66533-1-Ig (AP5Z1/SPG48 antibody) at dilution of 1:200 (under 10x lens).



Immunofluorescent analysis of (-20°C Ethanol) fixed HEK-293 cells using 66533-1-Ig (AP5Z1/SPG48 antibody) at dilution of 1:100 and Alexa Fluor 488-Conjugated AffiniPure Goat Anti-Mouse IgG(H+L).