

For Research Use Only

EXOC3L2 Monoclonal ANTIBODY



Catalog Number: 66537-1-Ig **1 Publications**

Basic Information

Catalog Number: 66537-1-Ig	GenBank Accession Number: BC104947	Purification Method: Protein G purification
Size: 150UL, Concentration: 1000 µg/ml by Bradford method using BSA as the standard;	GeneID (NCBI): 90332	CloneNo.: 3C1C2
Source: Mouse	Full Name: exocyst complex component 3-like 2	Recommended Dilutions: WB 1:1500-1:6000
Isotype: IgG1	Calculated MW: 46 kDa	
Immunogen Catalog Number: AG26912	Observed MW: 46 kDa	

Applications

Tested Applications: WB, ELISA	Positive Controls: WB: HUVEC cells,
Cited Applications: WB	
Species Specificity: Human	
Cited Species: human	

Background Information

The exocyst is a protein complex that ensures spatial targeting of exocytotic vesicles to the plasma membrane. Exocyst complex component 3-like 2 (EXOC3L2) associates with the exocyst complex and mediates directional migration of endothelial cells (PMID: 21566143). The gene of human EXOC3L2 maps to chromosome 19q13.32 and encodes a deduced 409-amino acid protein with a calculated molecular mass of about 46 kDa. Mouse Exoc3l2 gene encodes an approximately 250-amino acid protein that lacks the N-terminal domain of human EXOC3L2. Mutations in EXOC3L2 gene may be associated with Alzheimer's disease.

Notable Publications

Author	Pubmed ID	Journal	Application
Adel Shalata	30327448	J Med Genet	WB

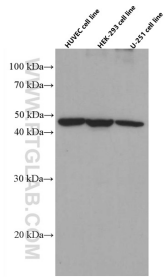
Storage

Storage:
Store at -20°C. Stable for one year after shipment.
Storage Buffer:
PBS with 0.1% sodium azide and 50% glycerol pH 7.3.
Aliquoting is unnecessary for -20°C storage

For technical support and original validation data for this product please contact:
T: 1 (888) 4PTGLAB (1-888-478-4522) (toll free in USA), or 1(312) 455-8498 (outside USA)
E: proteintech@ptglab.com
W: ptglab.com

This product is exclusively available under Proteintech Group brand and is not available to purchase from any other manufacturer.

Selected Validation Data



HUVEC, HEK-293 and U-251 cells were subjected to SDS PAGE followed by western blot with 66537-1-Ig (EXOC3L2 antibody) at dilution of 1:3000 incubated at room temperature for 1.5 hours.