

For Research Use Only

SDHA Monoclonal ANTIBODY



Catalog Number: 66588-1-Ig **1 Publications**

Basic Information

Catalog Number: 66588-1-Ig	GenBank Accession Number: BC001380	Purification Method: Protein G purification
Size: 150UL, Concentration: 1000 µg/ml by Bradford method using BSA as the standard;	GeneID (NCBI): 6389	CloneNo.: 5E10G12
Source: Mouse	Full Name: succinate dehydrogenase complex, subunit A, flavoprotein (Fp)	Recommended Dilutions: WB 1:20000-1:80000 IHC 1:1000-1:4000 IF 1:50-1:500
Isotype: IgG1	Calculated MW: 73 kDa	
Immunogen Catalog Number: AG7023	Observed MW: 62-73 kDa	

Applications

Tested Applications:

IF, IHC, WB, ELISA

Species Specificity:

Human, Mouse, Rat

Note-IHC: suggested antigen retrieval with TE buffer pH 9.0; (*) Alternatively, antigen retrieval may be performed with citrate buffer pH 6.0

Positive Controls:

WB: HeLa cells, HEK-293 cells, HepG2 cells, Jurkat cells, HSC-T6 cells, NIH/3T3 cells, RAW 264.7 cells

IHC: human liver cancer tissue,

IF: HepG2 cells,

Background Information

SDHA, also named as SDH2, SDHF and Fp, belongs to the FAD-dependent oxidoreductase 2 family and FRD/SDH subfamily. SDHA is the flavoprotein subunit of succinate dehydrogenase (SDH) that is involved in complex II of the mitochondrial electron transport chain and is responsible for transferring electrons from succinate to ubiquinone (coenzyme Q). SDHA has 3 isoforms with the molecular mass of 73, 67 and 57 kDa, and the N-terminal (~5 kDa) can be removed in mature form. It can be detected a band of 68 kDa in cutaneous melanoma (PMID:21698147). SDHA may act as a tumor suppressor.

Notable Publications

Author	Pubmed ID	Journal	Application
Jian Xiao	31144242	Sci China Life Sci	

Storage

Storage:

Store at -20°C. Stable for one year after shipment.

Storage Buffer:

PBS with 0.1% sodium azide and 50% glycerol pH 7.3.

Aliquoting is unnecessary for -20°C storage

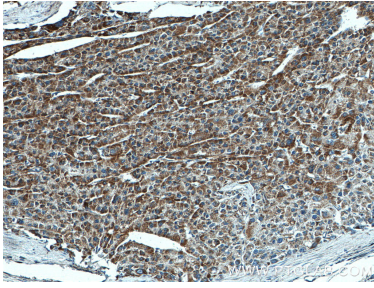
For technical support and original validation data for this product please contact:

T: 1 (888) 4PTGLAB (1-888-478-4522) (toll free in USA), or 1(312) 455-8498 (outside USA)

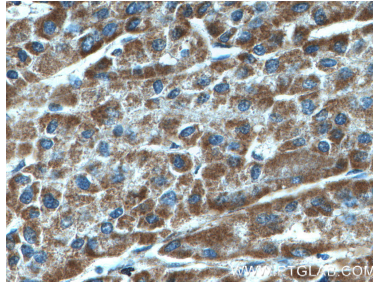
E: proteintech@ptglab.com
W: ptglab.com

This product is exclusively available under Proteintech Group brand and is not available to purchase from any other manufacturer.

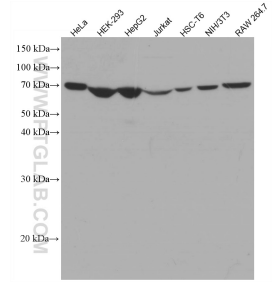
Selected Validation Data



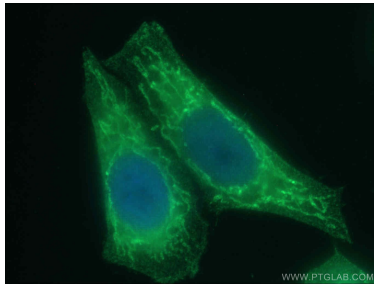
Immunohistochemical analysis of paraffin-embedded human liver cancer tissue slide using 66588-1-Ig (SDHA antibody) at dilution of 1:2000 (under 10x lens).



Immunohistochemical analysis of paraffin-embedded human liver cancer tissue slide using 66588-1-Ig (SDHA antibody) at dilution of 1:2000 (under 40x lens).



Various lysates were subjected to SDS PAGE followed by western blot with 66588-1-Ig (SDHA antibody) at dilution of 1:50000 incubated at room temperature for 1.5 hours.



Immunofluorescent analysis of (4% PFA) fixed HepG2 cells using 66588-1-Ig (SDHA antibody) at dilution of 1:100 and Alexa Fluor 488-Conjugated AffiniPure Goat Anti-Mouse IgG(H+L).