

For Research Use Only

SDHA Monoclonal antibody, PBS Only (Capture)

Catalog Number: 66588-1-PBS



Basic Information

Catalog Number: 66588-1-PBS	GenBank Accession Number: BC001380	Purification Method: Protein G purification
Size: 100ug , Concentration: 1mg/ml by Nanodrop;	GeneID (NCBI): 6389	CloneNo.: 5E10G12
Source: Mouse	UNIPROT ID: P31040	
Isotype: IgG1	Full Name: succinate dehydrogenase complex, subunit A, flavoprotein (Fp)	
Immunogen Catalog Number: AG7023	Calculated MW: 73 kDa	
	Observed MW: 62-73 kDa	

Applications

Tested Applications:
WB, IHC, IF/ICC, Cytometric bead array, Indirect ELISA

Species Specificity:
human, mouse, rat, pig, rabbit

Product Information

66588-1-PBS targets SDHA as part of a matched antibody pair:

MP50790-1: 66588-1-PBS capture and 66588-2-PBS detection (validated in Cytometric bead array)

MP50790-2: 66588-1-PBS capture and 66588-3-PBS detection (validated in Cytometric bead array)

MP50790-3: 66588-1-PBS capture and 66588-4-PBS detection (validated in Cytometric bead array)

Unconjugated mouse monoclonal antibody pair in PBS only (BSA and azide free) storage buffer at a concentration of 1 mg/mL, ready for conjugation.

This conjugation ready format makes antibodies ideal for use in many applications including: ELISAs, multiplex assays requiring matched pairs, mass cytometry, and multiplex imaging applications. Antibody use should be optimized by the end user for each application and assay.

Background Information

SDHA, also named as SDH2, SDHF and Fp, belongs to the FAD-dependent oxidoreductase 2 family and FRD/SDH subfamily. SDHA is the flavoprotein subunit of succinate dehydrogenase (SDH) that is involved in complex II of the mitochondrial electron transport chain and is responsible for transferring electrons from succinate to ubiquinone (coenzyme Q). SDHA has 3 isoforms with the molecular mass of 73, 67 and 57 kDa, and the N-terminal (~5 kDa) can be removed in mature form. It can be detected a band of 68 kDa in cutaneous melanoma (PMID:21698147). SDHA may act as a tumor suppressor.

Storage

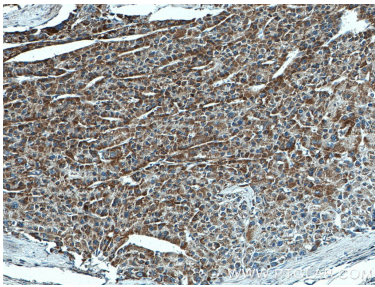
Storage:
Store at -80°C.

Storage Buffer:
PBS only, pH7.3

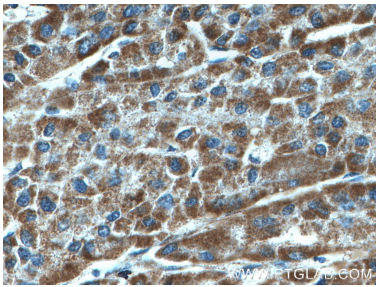
For technical support and original validation data for this product please contact:
T: 1 (888) 4PTGLAB (1-888-478-4522) (toll free in USA), or 1(312) 455-8498 (outside USA)
E: proteintech@ptglab.com
W: ptglab.com

This product is exclusively available under Proteintech Group brand and is not available to purchase from any other manufacturer.

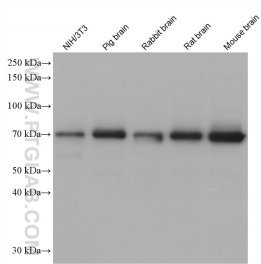
Selected Validation Data



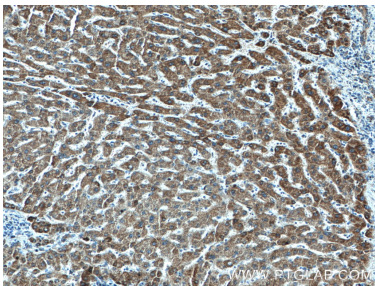
Immunohistochemical analysis of paraffin-embedded human liver cancer tissue slide using 66588-1-Ig (SDHA antibody) at dilution of 1:2000 (under 10x lens). This data was developed using the same antibody clone with 66588-1-PBS in a different storage buffer formulation.



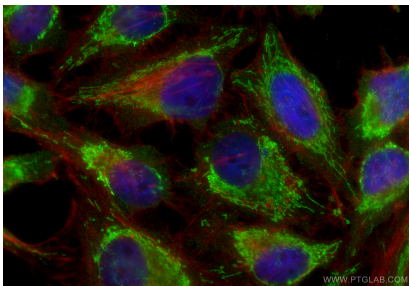
Immunohistochemical analysis of paraffin-embedded human liver cancer tissue slide using 66588-1-Ig (SDHA antibody) at dilution of 1:2000 (under 40x lens). This data was developed using the same antibody clone with 66588-1-PBS in a different storage buffer formulation.



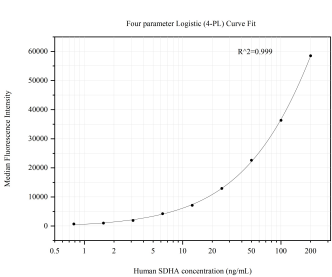
Various lysates were subjected to SDS PAGE followed by western blot with 66588-1-Ig (SDHA antibody) at dilution of 1:20000 incubated at room temperature for 1.5 hours. This data was developed using the same antibody clone with 66588-1-PBS in a different storage buffer formulation.



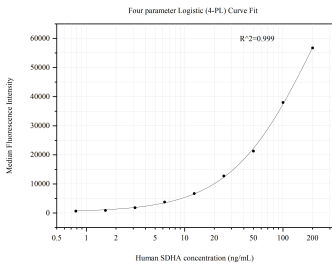
Immunohistochemical analysis of paraffin-embedded human liver cancer tissue slide using 66588-1-Ig (SDHA antibody) at dilution of 1:2000 (under 10x lens). This data was developed using the same antibody clone with 66588-1-PBS in a different storage buffer formulation.



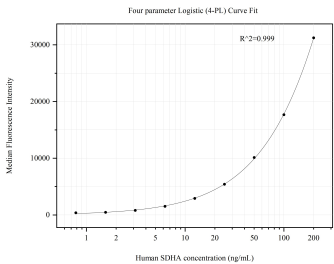
Immunofluorescent analysis of (4% PFA) fixed HeLa cells using SDHA antibody (66588-1-Ig, Clone: 5E10G12) at dilution of 1:400 and CoraLite@488-Conjugated Goat Anti-Mouse IgG(H+L) (SA00013-1), CL594-Phalloidin (red). This data was developed using the same antibody clone with 66588-1-PBS in a different storage buffer formulation.



Cytometric bead array standard curve of MP50790-1, SDHA Monoclonal Matched Antibody Pair, PBS Only. Capture antibody: 66588-1-PBS. Detection antibody: 66588-2-PBS. Standard:Ag7023. Range: 0.781-200 ng/mL



Cytometric bead array standard curve of MP50790-2, SDHA Monoclonal Matched Antibody Pair, PBS Only. Capture antibody: 66588-1-PBS. Detection antibody: 66588-3-PBS. Standard:Ag7023. Range: 0.781-200 ng/mL



Cytometric bead array standard curve of MP50790-3, SDHA Monoclonal Matched Antibody Pair, PBS Only. Capture antibody: 66588-1-PBS. Detection antibody: 66588-4-PBS. Standard:Ag7023. Range: 0.781-200 ng/mL