

For Research Use Only

RAF1 Monoclonal antibody

Catalog Number: 66592-1-Ig

Featured Product

1 Publications



Basic Information

Catalog Number: 66592-1-Ig	GenBank Accession Number: BC018119	Purification Method: Protein A purification
Size: 150ul , Concentration: 1000 µg/ml by Bradford method using BSA as the standard;	GeneID (NCBI): 5894	CloneNo.: 1D6A1
Source: Mouse	Full Name: v-raf-1 murine leukemia viral oncogene homolog 1	Recommended Dilutions: WB 1:1000-1:6000 IHC 1:150-1:600 IF 1:400-1:1600
Isotype: IgG2a	Calculated MW: 648 aa, 73 kDa	
Immunogen Catalog Number: AG25423	Observed MW: 70-75 kDa	

Applications

Tested Applications: IF, IHC, WB, ELISA	Positive Controls: WB : HEK-293 cells, K-562 cells, Jurkat cells, HL-60 cells, DC2.4 cells IHC : human prostate cancer tissue, IF : HEK-293 cells,
Cited Applications: WB	
Species Specificity: Human, Mouse	
Cited Species: human	
Note-IHC: suggested antigen retrieval with TE buffer pH 9.0; (*) Alternatively, antigen retrieval may be performed with citrate buffer pH 6.0	

Background Information

Raf-1 proto-oncogene, serine/threonine kinase (RAF1), is a MAP kinase kinase kinase (MAP3K), which functions downstream of the Ras family of membrane associated GTPases to which it binds directly. RAF1 has two isoforms with MW of 73, 75 kDa. RAF1 plays an important role in the control of gene expression involved in the cell division cycle, apoptosis, cell differentiation and cell migration.

Notable Publications

Author	Pubmed ID	Journal	Application
Wen-Fu Xu	32337697	Curr Med Sci	WB

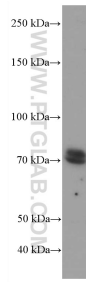
Storage

Storage:
Store at -20°C. Stable for one year after shipment.
Storage Buffer:
PBS with 0.02% sodium azide and 50% glycerol pH 7.3.
Aliquoting is unnecessary for -20°C storage

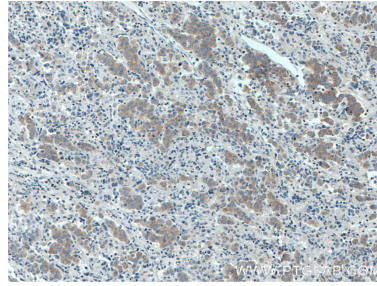
For technical support and original validation data for this product please contact:
T: 1 (888) 4PTGLAB (1-888-478-4522) (toll free in USA), or 1(312) 455-8498 (outside USA)
E: proteintech@ptglab.com
W: ptglab.com

This product is exclusively available under Proteintech Group brand and is not available to purchase from any other manufacturer.

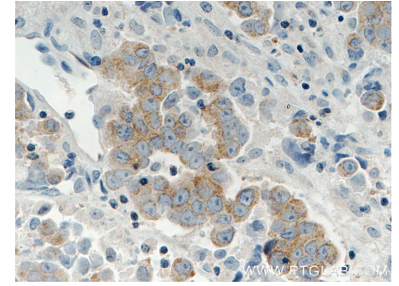
Selected Validation Data



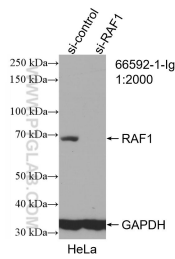
HEK-293 cells were subjected to SDS PAGE followed by western blot with 66592-1-Ig (RAF1 antibody) at dilution of 1:3000 incubated at room temperature for 1.5 hours.



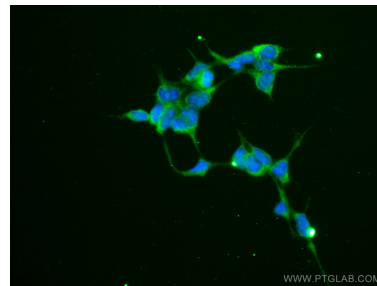
Immunohistochemical analysis of paraffin-embedded human prostate cancer tissue slide using 66592-1-Ig (RAF1 antibody) at dilution of 1:300 (under 10x lens. Heat mediated antigen retrieval with Tris-EDTA buffer (pH 9.0).



Immunohistochemical analysis of paraffin-embedded human prostate cancer tissue slide using 66592-1-Ig (RAF1 antibody) at dilution of 1:300 (under 40x lens. Heat mediated antigen retrieval with Tris-EDTA buffer (pH 9.0).



WB result of RAF1 antibody (66592-1-Ig; 1:2000; incubated at room temperature for 1.5 hours) with sh-Control and sh-RAF1 transfected HEK-293 cells.



Immunofluorescent analysis of (-20°C Ethanol) fixed HEK-293 cells using RAF1 antibody (66592-1-Ig, Clone: 1D6A1) at dilution of 1:800 and CoraLite®488-Conjugated AffiniPure Goat Anti-Mouse IgG(H+L). DAPI (Blue).