

For Research Use Only

ATPB Monoclonal antibody

Catalog Number: 66600-1-Ig **3 Publications**



Basic Information

Catalog Number: 66600-1-Ig	GenBank Accession Number: BC016512	Purification Method: Protein A purification
Size: 150ul , Concentration: 1400 ug/ml by 506 Nanodrop and 1000 ug/ml by Bradford method using BSA as the standard;	GeneID (NCBI): P06576	CloneNo.: 1A11B9
Source: Mouse	UNIPROT ID: P06576	Recommended Dilutions: WB: 1:5000-1:50000 IHC: 1:250-1:1000 IF/ICC: 1:500-1:2000
Isotype: IgG2b	Full Name: ATP synthase, H ⁺ transporting, mitochondrial F1 complex, beta polypeptide	
Immunogen Catalog Number: AG11177	Calculated MW: 529 aa, 57 kDa	
	Observed MW: 45-57 kDa	

Applications

Tested Applications: WB, IHC, IF/ICC, ELISA	Positive Controls: WB : HeLa cells, HEK-293 cells, HepG2 cells, Jurkat cells, HSC T6 cells, Raw 264.7 cells, NIH/3T3 cells IHC : human liver tissue, mouse skeletal muscle tissue IF/ICC : HepG2 cells, U2OS cells
Cited Applications: WB	
Species Specificity: human, mouse, rat	
Cited Species: human, mouse, rat	
Note-IHC: suggested antigen retrieval with TE buffer pH 9.0; (*) Alternatively, antigen retrieval may be performed with citrate buffer pH 6.0	

Background Information

ATP5B, also named as ATPMB and ATPSB, belongs to the ATPase alpha/beta chains family. It is a high affinity HDL receptor for apolipoprotein A1. ATP5B is a subunit of mitochondrial ATP synthase (F1F0 ATP synthase or Complex V). ATP5B has a calculated molecular mass of 57 kDa and ~5 kDa transit peptide can be removed in the mature form.

Notable Publications

Author	Pubmed ID	Journal	Application
Simona Kurekova	35191136	Cell Biol Int	WB
Stephanie Zur Nedden	39332493	Metabolism	WB
Motahareh Solina Safari	39182844	Mol Metab	WB

Storage

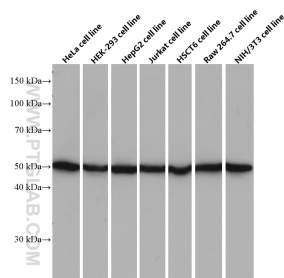
Storage:
Store at -20°C. Stable for one year after shipment.
Storage Buffer:
PBS with 0.02% sodium azide and 50% glycerol, pH7.3
Aliquoting is unnecessary for -20°C storage

*** 20ul sizes contain 0.1% BSA

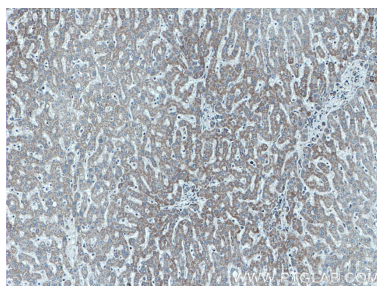
For technical support and original validation data for this product please contact:
T: 1 (888) 4PTGLAB (1-888-478-4522) (toll free in USA), or 1(312) 455-8498 (outside USA)
E: proteintech@ptglab.com
W: ptglab.com

This product is exclusively available under Proteintech Group brand and is not available to purchase from any other manufacturer.

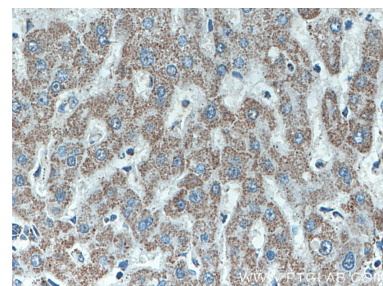
Selected Validation Data



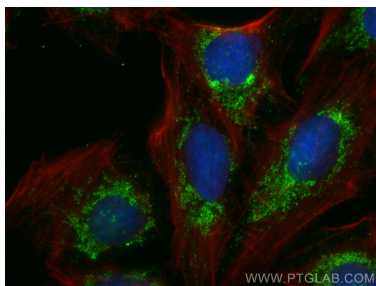
Various lysates were subjected to SDS PAGE followed by western blot with 66600-1-Ig (ATPB antibody) at dilution of 1:10000 incubated at room temperature for 1.5 hours.



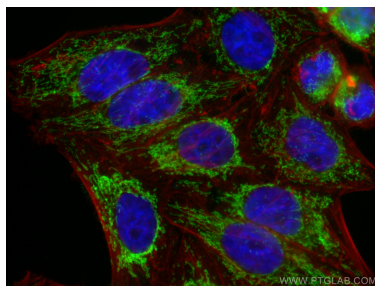
Immunohistochemical analysis of paraffin-embedded human liver tissue slide using 66600-1-Ig (ATPB antibody) at dilution of 1:500 (under 10x lens).



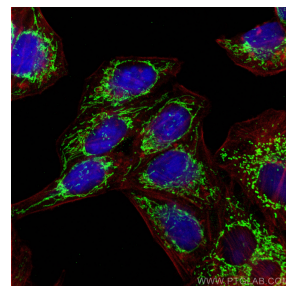
Immunohistochemical analysis of paraffin-embedded human liver tissue slide using 66600-1-Ig (ATPB antibody) at dilution of 1:500 (under 40x lens).



Immunofluorescent analysis of (4% PFA) fixed U2OS cells using ATPB antibody (66600-1-Ig, Clone: 1A11B9) at dilution of 1:800 and CoraLite®488-Conjugated Goat Anti-Mouse IgG(H+L) (SA00013-1), CL594-phalloidin (red).



Immunofluorescent analysis of (4% PFA) fixed HepG2 cells using ATPB antibody (66600-1-Ig, Clone: 1A11B9) at dilution of 1:1000 and CoraLite®488-Conjugated AffiniPure Goat Anti-Mouse IgG(H+L) (SA00013-1), CL594-Phalloidin (red).



Immunofluorescent analysis of (4% PFA) fixed HepG2 cells using ATPB antibody (66600-1-Ig, Clone: 1A11B9) at dilution of 1:1000 and CoraLite®488-Conjugated AffiniPure Goat Anti-Mouse IgG(H+L) (SA00013-1), CL594-Phalloidin (red).