

For Research Use Only

# PALLD, palladin Monoclonal ANTIBODY



Catalog Number: 66601-1-Ig

## Basic Information

**Catalog Number:**

66601-1-Ig

**Size:**

150UL, Concentration: 1000 µg/ml by 23022

Bradford method using BSA as the standard;

**Source:**

Mouse

**Isotype:**

IgG2a

**Immunogen Catalog Number:**

AG1288

**GenBank Accession Number:**

BC013867

**GeneID (NCBI):**

23022

**Full Name:**

palladin, cytoskeletal associated protein

**Calculated MW:**

1383 aa, 151 kDa

**Observed MW:**

151 kDa

**Purification Method:**

Protein A purification

**CloneNo.:**

2A1F6

**Recommended Dilutions:**

WB 1:1000-1:4000

IHC 1:50-1:500

## Applications

**Tested Applications:**

IHC, WB, ELISA

**Species Specificity:**

Human, rat, pig

**Note-IHC: suggested antigen retrieval with TE buffer pH 9.0; (\*) Alternatively, antigen retrieval may be performed with citrate buffer pH 6.0**

**Positive Controls:**

WB: human heart tissue, pig heart tissue, rat heart tissue

IHC: human colon cancer tissue,

## Background Information

### Storage

**Storage:**

Store at -20°C. Stable for one year after shipment.

**Storage Buffer:**

PBS with 0.1% sodium azide and 50% glycerol pH 7.3.

Aliquoting is unnecessary for -20°C storage

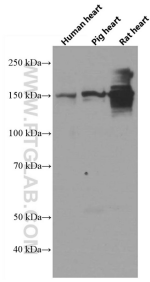
For technical support and original validation data for this product please contact:

T: 1 (888) 4PTGLAB (1-888-478-4522) (toll free in USA), or 1(312) 455-8498 (outside USA)

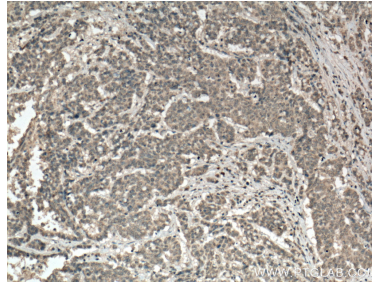
E: [proteintech@ptglab.com](mailto:proteintech@ptglab.com)  
W: [ptglab.com](http://ptglab.com)

**This product is exclusively available under Proteintech Group brand and is not available to purchase from any other manufacturer.**

## Selected Validation Data



Human heart tissue, pig heart tissue and rat heart tissue were subjected to SDS PAGE followed by western blot with 66601-1-Ig (PALLD,palladin antibody) at dilution of 1:2000 incubated at room temperature for 1.5 hours.



Immunohistochemical analysis of paraffin-embedded human colon cancer tissue slide using 66601-1-Ig (PALLD,palladin antibody) at dilution of 1:200 (under 10x lens. Heat mediated antigen retrieval with Tris-EDTA buffer (pH 9.0).