

For Research Use Only

# PPP3CB Monoclonal ANTIBODY



Catalog Number: 66614-1-Ig

## Basic Information

<b>Catalog Number:</b> 66614-1-Ig	<b>GenBank Accession Number:</b> BC028049	<b>Purification Method:</b> Protein A purification
<b>Size:</b> 150UL, Concentration: 1000 µg/ml by Bradford method using BSA as the standard;	<b>GeneID (NCBI):</b> 5532	<b>CloneNo.:</b> 3C1A3
<b>Source:</b> Mouse	<b>Full Name:</b> protein phosphatase 3 (formerly 2B), catalytic subunit, beta isoform	<b>Recommended Dilutions:</b> WB 1:5000-1:10000
<b>Isotype:</b> IgG1	<b>Calculated MW:</b> 525 aa, 59 kDa	
<b>Immunogen Catalog Number:</b> AG26987	<b>Observed MW:</b> 59 kDa	

## Applications

**Tested Applications:**  
WB, ELISA

**Species Specificity:**  
Human, mouse, rat, pig

**Positive Controls:**  
WB: pig brain tissue, NIH/3T3 cells, fetal human brain tissue, rat brain tissue, mouse brain tissue

## Background Information

PPP3CB is one of the three isoforms of the A subunit of calcineurin (CnA). Calcineurin is a calcium-dependent serine/threonine phosphatase. It consists of two subunits: subunit A (CnA) and subunit B (CnB). For CnA, three isoforms PPP3CA (CnA $\alpha$ ), PPP3CB (CnA $\beta$ ) and PPP3CC (CnA $\gamma$ ) have been identified. PPP3CB is a calcium-dependent, calmodulin-stimulated protein phosphatase. It may have a role in the calmodulin activation of calcineurin.

## Storage

**Storage:**  
Store at -20°C. Stable for one year after shipment.

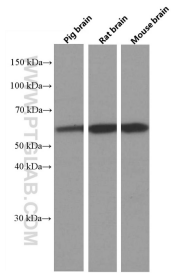
**Storage Buffer:**  
PBS with 0.1% sodium azide and 50% glycerol pH 7.3.

Aliquoting is unnecessary for -20°C storage

For technical support and original validation data for this product please contact:  
T: 1 (888) 4PTGLAB (1-888-478-4522) (toll free in USA), or 1(312) 455-8498 (outside USA)  
E: proteintech@ptglab.com  
W: ptglab.com

This product is exclusively available under Proteintech Group brand and is not available to purchase from any other manufacturer.

## Selected Validation Data



Various lysates were subjected to SDS PAGE followed by western blot with 66614-1-Ig (PPP3CB antibody) at dilution of 1:10000 incubated at room temperature for 1.5 hours.