

For Research Use Only

ACSL4 Monoclonal ANTIBODY



Catalog Number: 66617-1-Ig **Featured Product**

Basic Information

Catalog Number: 66617-1-Ig	GenBank Accession Number: BC034959	Purification Method: Protein G purification
Size: 150UL, Concentration: 1000 µg/ml by 2182 Bradford method using BSA as the standard;	GeneID (NCBI): 2182	CloneNo.: 1H5D3
Source: Mouse	Full Name: acyl-CoA synthetase long-chain family member 4	Recommended Dilutions: WB 1:3000-1:10000 IHC 1:250-1:1000
Isotype: IgG1	Calculated MW: 711 aa, 79 kDa	
Immunogen Catalog Number: AG18085	Observed MW: 74 kDa	

Applications

Tested Applications:

IHC, WB, ELISA

Species Specificity:

Human

**Note-IHC: suggested antigen retrieval with
TE buffer pH 9.0; (*) Alternatively, antigen
retrieval may be performed with citrate
buffer pH 6.0**

Positive Controls:

WB: HeLa cells, Caco-2 cells, COLO 320 cells, HepG2
cells, L02 cells, HT-29 cells

IHC: human cerebellum tissue,

Background Information

Storage

Storage:

Store at -20°C. Stable for one year after shipment.

Storage Buffer:

PBS with 0.1% sodium azide and 50% glycerol pH 7.3.

Aliquoting is unnecessary for -20°C storage

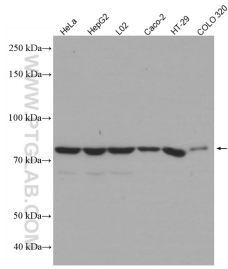
For technical support and original validation data for this product please contact:

T: 1 (888) 4PTGLAB (1-888-478-4522) (toll free
in USA), or 1(312) 455-8498 (outside USA)

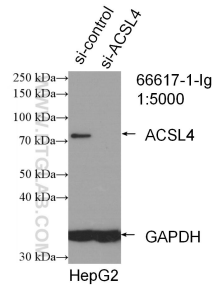
E: proteintech@ptglab.com
W: ptglab.com

**This product is exclusively available under Proteintech
Group brand and is not available to purchase from any
other manufacturer.**

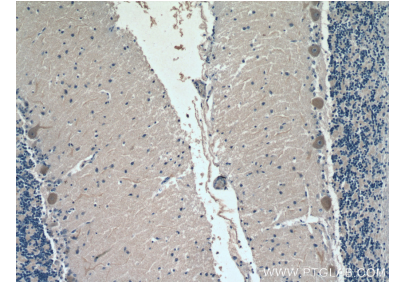
Selected Validation Data



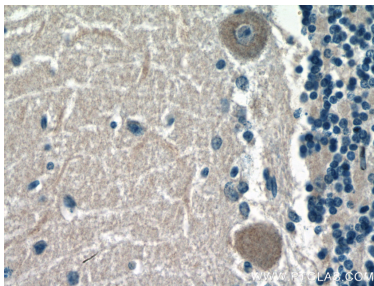
Various lysates were subjected to SDS PAGE followed by western blot with 66617-1-Ig (ACSL4 antibody) at dilution of 1:5000 incubated at room temperature for 1.5 hours.



WB result of ACSL4 antibody (66617-1-Ig; 1:5000; incubated at room temperature for 1.5 hours) with sh-Control and sh-ACSL4 transfected HepG2 cells.



Immunohistochemical analysis of paraffin-embedded human cerebellum tissue slide using 66617-1-Ig (ACSL4 antibody) at dilution of 1:500 (under 10x lens).



Immunohistochemical analysis of paraffin-embedded human cerebellum tissue slide using 66617-1-Ig (ACSL4 antibody) at dilution of 1:500 (under 40x lens).