

For Research Use Only

ACSL4 Monoclonal antibody

Catalog Number: 66617-1-Ig

Featured Product

2 Publications



Basic Information

Catalog Number:

66617-1-Ig

Size:

150ul, Concentration: 1000 µg/ml by Bradford method using BSA as the standard;

Source:

Mouse

Isotype:

IgG1

Immunogen Catalog Number:

AG18085

GenBank Accession Number:

BC034959

GeneID (NCBI):

2182

Full Name:

acyl-CoA synthetase long-chain family member 4

Calculated MW:

711 aa, 79 kDa

Observed MW:

74 kDa

Purification Method:

Protein G purification

CloneNo.:

1H5D3

Recommended Dilutions:

WB 1:3000-1:10000

IHC 1:250-1:1000

Applications

Tested Applications:

IHC, WB, ELISA

Cited Applications:

WB

Species Specificity:

Human

Cited Species:

human

Note-IHC: suggested antigen retrieval with TE buffer pH 9.0; (*) Alternatively, antigen retrieval may be performed with citrate buffer pH 6.0

Positive Controls:

WB: HeLa cells, Caco-2 cells, COLO 320 cells, HepG2 cells, L02 cells, HT-29 cells

IHC: human cerebellum tissue,

Background Information

Notable Publications

Author	Pubmed ID	Journal	Application
Yongfei He	34790741	Ann Transl Med	WB
Na Wei	34048148	FEBS Open Bio	WB

Storage

Storage:

Store at -20°C. Stable for one year after shipment.

Storage Buffer:

PBS with 0.02% sodium azide and 50% glycerol pH 7.3.

Aliquoting is unnecessary for -20°C storage

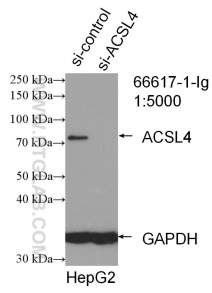
For technical support and original validation data for this product please contact:

T: 1 (888) 4PTGLAB (1-888-478-4522) (toll free in USA), or 1(312) 455-8498 (outside USA)

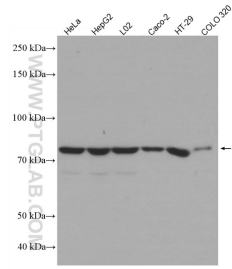
E: proteintech@ptglab.com
W: ptglab.com

This product is exclusively available under Proteintech Group brand and is not available to purchase from any other manufacturer.

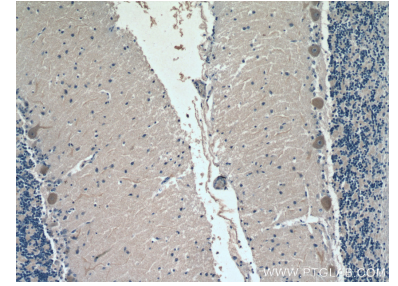
Selected Validation Data



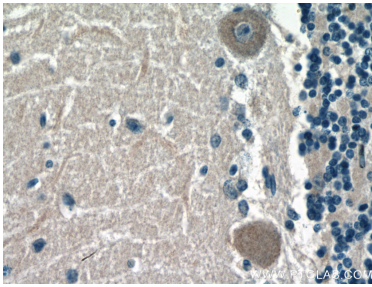
WB result of ACSL4 antibody (66617-1-Ig; 1:5000; incubated at room temperature for 1.5 hours) with sh-Control and sh-ACSL4 transfected HepG2 cells.



Various lysates were subjected to SDS PAGE followed by western blot with 66617-1-Ig (ACSL4 antibody) at dilution of 1:5000 incubated at room temperature for 1.5 hours.



Immunohistochemical analysis of paraffin-embedded human cerebellum tissue slide using 66617-1-Ig (ACSL4 antibody) at dilution of 1:500 (under 10x lens).



Immunohistochemical analysis of paraffin-embedded human cerebellum tissue slide using 66617-1-Ig (ACSL4 antibody) at dilution of 1:500 (under 40x lens).