

For Research Use Only

# RABEPK/p40 Monoclonal ANTIBODY



Catalog Number: 66622-1-Ig

## Basic Information

<b>Catalog Number:</b> 66622-1-Ig	<b>GenBank Accession Number:</b> BC065725	<b>Purification Method:</b> Protein A purification
<b>Size:</b> 150UL, Concentration: 1000 µg/ml by Bradford method using BSA as the standard;	<b>GeneID (NCBI):</b> 10244	<b>CloneNo.:</b> 1E11A3
<b>Source:</b> Mouse	<b>Full Name:</b> Rab9 effector protein with kelch motifs	<b>Recommended Dilutions:</b> WB 1:1000-1:6000 IHC 1:500-1:2000 IF 1:50-1:500
<b>Isotype:</b> IgG1	<b>Calculated MW:</b> 41 kDa	
<b>Immunogen Catalog Number:</b> AG7796	<b>Observed MW:</b> 40 kDa	

## Applications

<b>Tested Applications:</b> IF, IHC, WB, ELISA	<b>Positive Controls:</b> WB: Jurkat cells, HeLa cells, HEK-293 cells, HSCT6 cells, RAW 264.7 cells
<b>Species Specificity:</b> Human, mouse, rat	<b>IHC:</b> human lung cancer tissue, human colon tissue
<b>Note-IHC:</b> suggested antigen retrieval with <b>TE buffer pH 9.0; (*) Alternatively, antigen retrieval may be performed with citrate buffer pH 6.0</b>	<b>IF:</b> A549 cells,

## Background Information

Rab9 GTPase is required for the transport of mannose 6-phosphate receptors from endosomes to the trans-Golgi network in living cells, and in an in vitro system that reconstitutes this process. P40 is an effector of Rab9 that interacts preferentially with the active form of Rab9. p40 does not interact with Rab7 or K-Ras; it also fails to bind Rab9 when it is bound to GDI. The protein is found in cytosol, yet a significant fraction (~30%) is associated with cellular membranes. P40 is a very potent transport factor in that the pure, recombinant protein can stimulate, significantly, an in vitro transport assay that measures transport of mannose 6-phosphate receptors from endosomes to the trans-Golgi network.

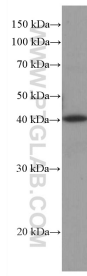
## Storage

**Storage:**  
Store at -20°C. Stable for one year after shipment.  
**Storage Buffer:**  
PBS with 0.1% sodium azide and 50% glycerol pH 7.3.  
**Aliquoting is unnecessary for -20°C storage**

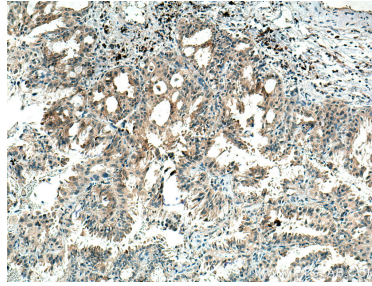
For technical support and original validation data for this product please contact:  
T: 1 (888) 4PTGLAB (1-888-478-4522) (toll free in USA), or 1(312) 455-8498 (outside USA)      E: proteintech@ptglab.com  
W: ptglab.com

**This product is exclusively available under Proteintech Group brand and is not available to purchase from any other manufacturer.**

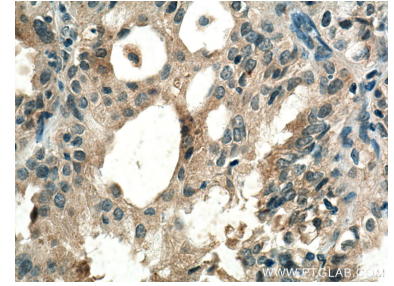
## Selected Validation Data



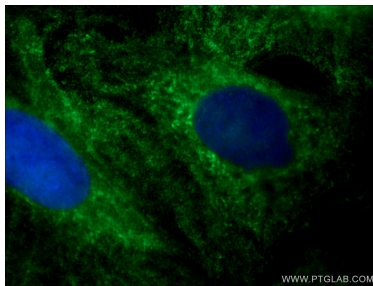
Jurkat cells were subjected to SDS PAGE followed by western blot with 66622-1-Ig (RABEPK/p40 antibody) at dilution of 1:3000 incubated at room temperature for 1.5 hours.



Immunohistochemical analysis of paraffin-embedded human lung cancer tissue slide using 66622-1-Ig (RABEPK/p40 antibody) at dilution of 1:1000 (under 10x lens). Heat mediated antigen retrieval with Tris-EDTA buffer (pH 9.0).



Immunohistochemical analysis of paraffin-embedded human lung cancer tissue slide using 66622-1-Ig (RABEPK/p40 antibody) at dilution of 1:1000 (under 40x lens). Heat mediated antigen retrieval with Tris-EDTA buffer (pH 9.0).



Immunofluorescent analysis of (-20°C Ethanol) fixed A549 cells using 66622-1-Ig (RABEPK/p40 antibody) at dilution of 1:100 and CoraLite488-Conjugated AffiniPure Goat Anti-Mouse IgG(H+L).