

For Research Use Only

ROCK2 Monoclonal antibody

Catalog Number: 66633-1-Ig

Featured Product

11 Publications



Basic Information

Catalog Number:

66633-1-Ig

Size:

150ul, Concentration: 1200 ug/ml by Nanodrop and 1000 ug/ml by Bradford method using BSA as the standard;

Source:

Mouse

Isotype:

IgG2b

Immunogen Catalog Number:

AG16330

GenBank Accession Number:

BC111801

GeneID (NCBI):

9475

UNIPROT ID:

O75116

Full Name:

Rho-associated, coiled-coil containing protein kinase 2

Calculated MW:

77 kDa, 161 kDa

Observed MW:

161 kDa

Purification Method:

Protein A purification

CloneNo.:

1C7B8

Recommended Dilutions:

WB 1:5000-1:50000

IHC 1:250-1:1000

Applications

Tested Applications:

WB, IHC, ELISA

Cited Applications:

WB, IHC

Species Specificity:

Human, Rat, Mouse

Cited Species:

human, mouse, rat

Note-IHC: suggested antigen retrieval with TE buffer pH 9.0; (*) Alternatively, antigen retrieval may be performed with citrate buffer pH 6.0

Positive Controls:

WB : HeLa cells, HEK-293 cells, MCF-7 cells, Jurkat cells, HSC-T6 cells, NIH/3T3 cells

IHC : human liver cancer tissue,

Background Information

ROCK2 is a serine/threonine kinase that regulates cytokinesis, smooth muscle contraction, the formation of actin stress fibers and focal adhesions, and the activation of the c-fos serum response element. It is an isozyme of ROCK1, is a target for the small GTPase Rho. ROCK2 is localized in both cytoplasm and nucleus, and the nucleus-localized ROCK2 can target p300 for phosphorylation to regulate its acetyltransferase activity (PMID:16574662). This antibody is specific to ROCK2.

Notable Publications

Author	Pubmed ID	Journal	Application
Mingyue Zheng	31150636	Exp Eye Res	WB
Wenpeng Cao	35322742	Bioengineered	IHC
Fangfei Li	35173550	Int J Biol Sci	WB

Storage

Storage:

Store at -20°C. Stable for one year after shipment.

Storage Buffer:

PBS with 0.02% sodium azide and 50% glycerol pH 7.3.

Aliquoting is unnecessary for -20°C storage

*** 20ul sizes contain 0.1% BSA

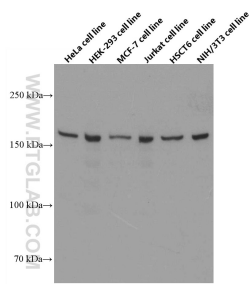
For technical support and original validation data for this product please contact:

T: 1 (888) 4PTGLAB (1-888-478-4522) (toll free in USA), or 1(312) 455-8498 (outside USA)

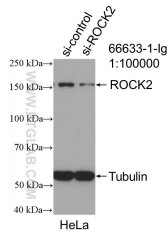
E: proteintech@ptglab.com
W: ptglab.com

This product is exclusively available under Proteintech Group brand and is not available to purchase from any other manufacturer.

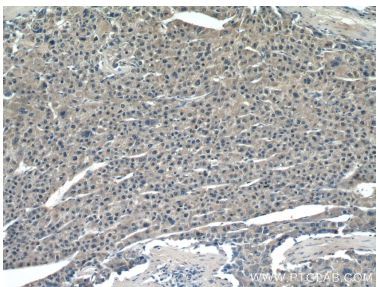
Selected Validation Data



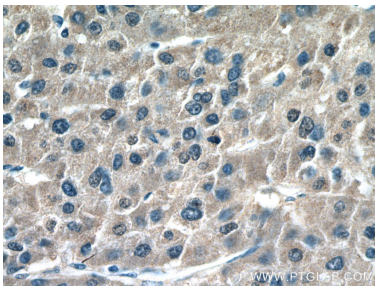
Various lysates were subjected to SDS PAGE followed by western blot with 66633-1-Ig (ROCK2 antibody) at dilution of 1:20000 incubated at room temperature for 1.5 hours.



WB result of ROCK2 antibody (66633-1-Ig; 1:100000; incubated at room temperature for 1.5 hours) with sh-Control and sh-ROCK2 transfected HeLa cells.



Immunohistochemical analysis of paraffin-embedded human liver cancer tissue slide using 66633-1-Ig (ROCK2 antibody) at dilution of 1:500 (under 10x lens).



Immunohistochemical analysis of paraffin-embedded human liver cancer tissue slide using 66633-1-Ig (ROCK2 antibody) at dilution of 1:500 (under 40x lens).