

For Research Use Only

ANGPTL8 Monoclonal ANTIBODY



Catalog Number: 66641-1-Ig

Basic Information

Catalog Number: 66641-1-Ig	GenBank Accession Number: BC146552	Purification Method: Protein G purification
Size: 150UL, Concentration: 1000 µg/ml by Bradford method using BSA as the standard;	GeneID (NCBI): 55908	CloneNo.: 2H9F9
Source: Mouse	Full Name: hepatocellular carcinoma-associated gene TD26	Recommended Dilutions: WB 1:1000-1:8000 IHC 1:200-1:800
Isotype: IgG1	Calculated MW: 251 aa, 28 kDa	
Immunogen Catalog Number: AG20708		

Applications

Tested Applications:

IHC, WB, ELISA

Species Specificity:

Human

Note-IHC: suggested antigen retrieval with TE buffer pH 9.0; (*) Alternatively, antigen retrieval may be performed with citrate buffer pH 6.0

Positive Controls:

WB: human adipose tissue,

IHC: human liver tissue, human liver cancer tissue

Background Information

Storage

Storage:

Store at -20°C. Stable for one year after shipment.

Storage Buffer:

PBS with 0.1% sodium azide and 50% glycerol pH 7.3.

Aliquoting is unnecessary for -20°C storage

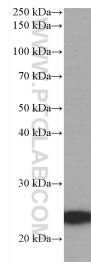
For technical support and original validation data for this product please contact:

T: 1 (888) 4PTGLAB (1-888-478-4522) (toll free in USA), or 1(312) 455-8498 (outside USA)

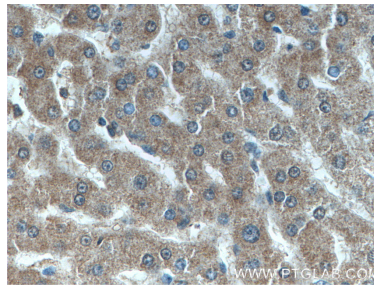
E: proteintech@ptglab.com
W: ptglab.com

This product is exclusively available under Proteintech Group brand and is not available to purchase from any other manufacturer.

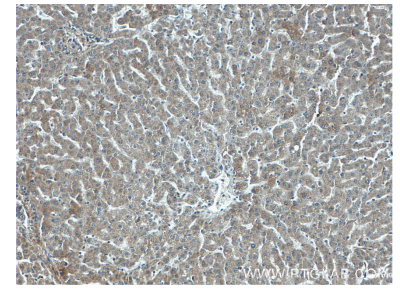
Selected Validation Data



human adipose tissue were subjected to SDS PAGE followed by western blot with 66641-1-Ig (ANGPTL8 antibody) at dilution of 1:4000 incubated at room temperature for 1.5 hours.



Immunohistochemical analysis of paraffin-embedded human liver tissue slide using 66641-1-Ig (ANGPTL8 antibody) at dilution of 1:400 (under 40x lens).



Immunohistochemical analysis of paraffin-embedded human liver tissue slide using 66641-1-Ig (ANGPTL8 antibody) at dilution of 1:400 (under 10x lens).