

For Research Use Only

# EIF4E Monoclonal antibody

Catalog Number: 66655-1-Ig

Featured Product

6 Publications



## Basic Information

Catalog Number:

66655-1-Ig

Size:

150ul, Concentration: 1800 ug/ml by Nanodrop and 1000 ug/ml by Bradford method using BSA as the standard;

Source:

Mouse

Isotype:

IgG1

Immunogen Catalog Number:

AG27191

GenBank Accession Number:

BC012611

GeneID (NCBI):

1977

UNIPROT ID:

P06730

Full Name:

eukaryotic translation initiation factor 4E

Calculated MW:

29 kDa

Observed MW:

26-29 kDa

Purification Method:

Protein G purification

CloneNo.:

3C6B9

Recommended Dilutions:

WB: 1:5000-1:50000

IHC: 1:2500-1:10000

IF/ICC: 1:400-1:1600

FC (Intra): 0.20 ug per 10<sup>6</sup> cells in a 100 µl suspension

## Applications

Tested Applications:

WB, IHC, IF/ICC, FC (Intra), ELISA

Cited Applications:

WB, IHC, IF

Species Specificity:

human, mouse, rat

Cited Species:

human, mouse

**Note-IHC: suggested antigen retrieval with TE buffer pH 9.0; (\*) Alternatively, antigen retrieval may be performed with citrate buffer pH 6.0**

Positive Controls:

WB: Jurkat cells, HEK-293 cells, LNCaP cells, U2OS cells, HSC-T6 cells, NIH/3T3 cells, RAW 264.7 cells, HeLa cells, MCF-7 cells

IHC: human breast cancer tissue,

IF/ICC: HepG2 cells,

FC (Intra): HepG2 cells,

## Background Information

Eukaryotic translation initiation factor 4E, also known as eIF4E, is a protein that in humans is encoded by the EIF4E gene. eIF4E is the mRNA cap-binding protein, known as a general initiation factor allowing for mRNA-ribosome interaction and cap-dependent translation in eukaryotic cells. eIF4E is a polypeptide that exists as both a free form and as part of the eIF4F pre-initiation complex. Regulation of eIF4E may be achieved via three distinct mechanisms: transcription, phosphorylation, and inhibitory proteins.

## Notable Publications

Author	Pubmed ID	Journal	Application
Shasha Zhao	35768165	J Immunother Cancer	WB
Xiao Ke	35802246	Neurosci Bull	WB, IHC
Tetsuya Kawahara	40158795	Metabolism	WB

## Storage

Storage:

Store at -20°C. Stable for one year after shipment.

Storage Buffer:

PBS with 0.02% sodium azide and 50% glycerol, pH7.3

Aliquoting is unnecessary for -20°C storage

\*\*\* 20ul sizes contain 0.1% BSA

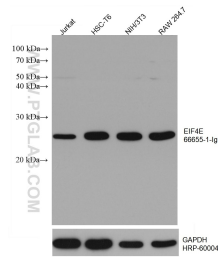
For technical support and original validation data for this product please contact:

T: 1 (888) 4PTGLAB (1-888-478-4522) (toll free in USA), or 1(312) 455-8498 (outside USA)

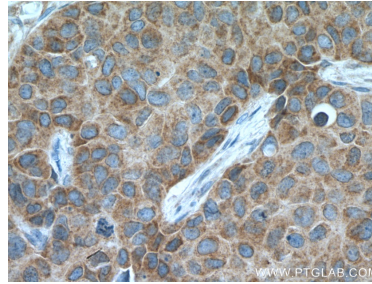
E: proteintech@ptglab.com  
W: ptglab.com

This product is exclusively available under Proteintech Group brand and is not available to purchase from any other manufacturer.

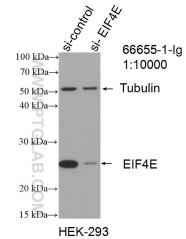
## Selected Validation Data



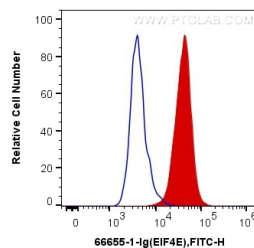
Various lysates were subjected to SDS PAGE followed by western blot with 66655-1-Ig (EIF4E antibody) at dilution of 1:20000 incubated at room temperature for 1.5 hours. The membrane was stripped and reblotted with HRP-conjugated GAPDH Monoclonal antibody (HRP-60004) as loading control.



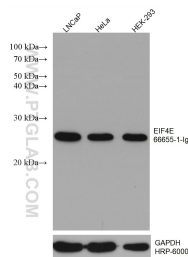
Immunohistochemical analysis of paraffin-embedded human breast cancer tissue slide using 66655-1-Ig (EIF4E antibody) at dilution of 1:5000 (under 40x lens. Heat mediated antigen retrieval with Tris-EDTA buffer (pH 9.0).



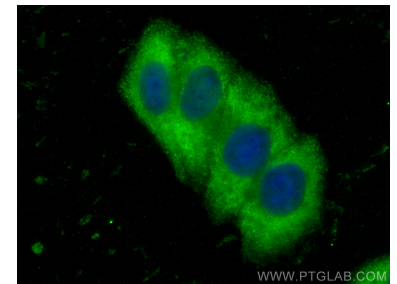
WB result of EIF4E antibody (66655-1-Ig; 1:10000; incubated at room temperature for 1.5 hours) with sh-Control and sh-EIF4E transfected HEK-293 cells.



1X10<sup>6</sup> HepG2 cells were intracellularly stained with 0.2 ug Anti-Human EIF4E (66655-1-Ig, Clone:3C6B9) and CoraLite®488-Conjugated AffiniPure Goat Anti-Mouse IgG(H+L) at dilution 1:1000 (red), or 0.2 ug Control Antibody. Cells were fixed with 4% PFA and permeabilized with Flow Cytometry Perm Buffer (PF00011-C).



Various lysates were subjected to SDS PAGE followed by western blot with 66655-1-Ig (EIF4E antibody) at dilution of 1:20000 incubated at room temperature for 1.5 hours. The membrane was stripped and reblotted with HRP-conjugated GAPDH Monoclonal antibody (HRP-60004) as loading control.



Immunofluorescent analysis of (-20°C Ethanol) fixed HepG2 cells using EIF4E antibody (66655-1-Ig, Clone: 3C6B9) at dilution of 1:800 and Multi-rAb CoraLite® Plus 488-Goat Anti-Mouse Recombinant Secondary Antibody (H+L) (RGAM002).