

For Research Use Only

# TOMM40 Monoclonal antibody

Catalog Number: 66658-1-Ig

Featured Product

11 Publications



## Basic Information

Catalog Number:

66658-1-Ig

Size:

150ul, Concentration: 1000 ug/ml by Bradford method using BSA as the standard;

Source:

Mouse

Isotype:

IgG1

Immunogen Catalog Number:

AG13065

GenBank Accession Number:

BC017224

GeneID (NCBI):

10452

UNIPROT ID:

O96008

Full Name:

translocase of outer mitochondrial membrane 40 homolog (yeast)

Calculated MW:

38 kDa

Observed MW:

38 kDa

Purification Method:

Protein G purification

CloneNo.:

5E2C5

Recommended Dilutions:

WB: 1:5000-1:50000

IHC: 1:50-1:500

IF/ICC: 1:50-1:500

## Applications

Tested Applications:

WB, IHC, IF/ICC, ELISA

Cited Applications:

WB, IHC, IF

Species Specificity:

human, mouse, rat, pig

Cited Species:

human, mouse, rat

**Note-IHC: suggested antigen retrieval with TE buffer pH 9.0; (\*) Alternatively, antigen retrieval may be performed with citrate buffer pH 6.0**

Positive Controls:

WB: LNCaP cells, HeLa cells, HEK-293 cells, HepG2 cells, human brain tissue, pig brain tissue, Jurkat cells, HSC-T6 cells, PC-12 cells, NIH/3T3 cells, RAW264.7 cells, K-562 cells, rat brain tissue, mouse brain tissue

IHC: mouse liver tissue,

IF/ICC: HepG2 cells, HeLa cells

## Notable Publications

Author	Pubmed ID	Journal	Application
Xuan Su	30431067	Int J Mol Med	WB, IHC
Lilian Phu	32142684	Mol Cell	WB
Yi Zhu	31993850	Apoptosis	WB

## Storage

Storage:

Store at -20°C. Stable for one year after shipment.

Storage Buffer:

PBS with 0.02% sodium azide and 50% glycerol, pH7.3

Aliquoting is unnecessary for -20°C storage

\*\*\* 20ul sizes contain 0.1% BSA

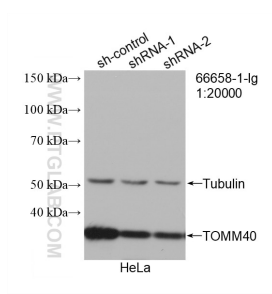
For technical support and original validation data for this product please contact:

T: 1 (888) 4PTGLAB (1-888-478-4522) (toll free in USA), or 1(312) 455-8498 (outside USA)

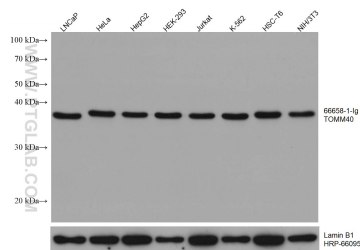
E: [proteintech@ptglab.com](mailto:proteintech@ptglab.com)  
W: [ptglab.com](http://ptglab.com)

This product is exclusively available under Proteintech Group brand and is not available to purchase from any other manufacturer.

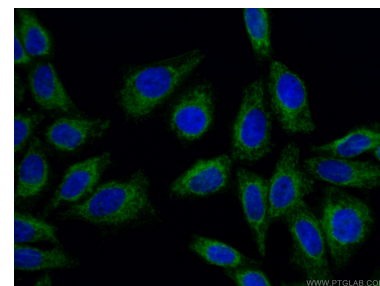
## Selected Validation Data



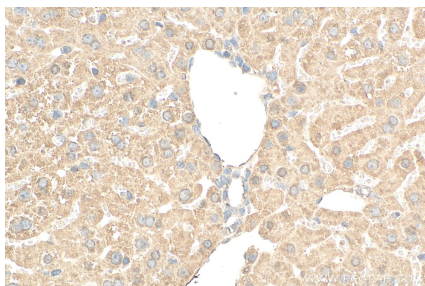
WB result of TOMM40 antibody (66658-1-Ig; 1:20000; incubated at room temperature for 1.5 hours) with sh-Control and sh-TOMM40 transfected HeLa cells.



Various lysates were subjected to SDS PAGE followed by western blot with 66658-1-Ig (TOMM40 antibody) at dilution of 1:20000 incubated at room temperature for 1.5 hours. The membrane was stripped and reblotted with HRP-conjugated Lamin B1 Monoclonal antibody (HRP-66095) as loading control.



Immunofluorescent analysis of (4% PFA) fixed HepG2 cells using 66658-1-Ig (TOMM40 antibody) at dilution of 1:100 and CoraLite488-Conjugated AffiniPure Goat Anti-Mouse IgG(H+L).



Immunohistochemical analysis of paraffin-embedded mouse liver tissue slide using 66658-1-Ig (TOMM40 antibody) at dilution of 1:200 (under 40x lens). Heat mediated antigen retrieval with Tris-EDTA buffer (pH 9.0).