

For Research Use Only

GOLGA2/GM130 Monoclonal ANTIBODY



Catalog Number: 66662-1-Ig

Basic Information

| | | |
|---|--|---|
| Catalog Number: 66662-1-Ig | GenBank Accession Number: BC014188 | Purification Method: Protein G purification |
| Size: 150UL, Concentration: 1000 µg/ml by 2801 Bradford method using BSA as the standard; | GeneID (NCBI): 2801 | CloneNo.: 2A4F11 |
| Source: Mouse | Full Name: golgi autoantigen, golgin subfamily a, 2 | Recommended Dilutions: WB 1:5000-1:50000 |
| Isotype: IgG1 | Calculated MW: 111 kDa | |
| Immunogen Catalog Number: AG1848 | Observed MW: 130 kDa | |

Applications

| | |
|---|---|
| Tested Applications: WB, ELISA | Positive Controls: WB: LNCaP cells, HEK-293 cells, HepG2 cells, Jurkat cells, HSC-T6 cells, HeLa cells, K-562 cells, PC-12 cells |
| Species Specificity: Human, Rat | |

Background Information

GOLGA2, also known as GM130, is a 130 kDa cis-Golgi matrix protein which is one component of the detergent and salt resistant Golgi matrix. It is a peripheral membrane protein highly bound to Golgi membrane and localized mainly at the cytoplasmic face of cis-Golgi membrane. Together with its interacting partner proteins, including p115, giantin, GRASP65, and Rab GTPase, GOLGA2/GM130 is involved in the regulation of ER-to-Golgi transport and also in the maintenance of the Golgi structure. Emerging evidence suggest that the GOLGA2/GM130 has potential roles in the control of glycosylation, cell cycle progression, and higher order cell functions such as cell polarization and directed cell migration. (PMID: 20197635)

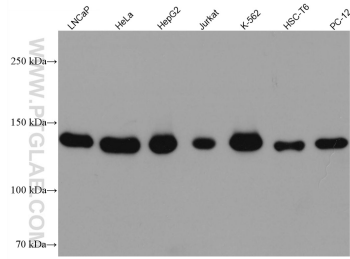
Storage

Storage:
Store at -20°C. Stable for one year after shipment.
Storage Buffer:
PBS with 0.1% sodium azide and 50% glycerol pH 7.3.
Aliquoting is unnecessary for -20°C storage

For technical support and original validation data for this product please contact:
T: 1 (888) 4PTGLAB (1-888-478-4522) (toll free in USA), or 1(312) 455-8498 (outside USA)
E: proteintech@ptglab.com
W: ptglab.com

This product is exclusively available under Proteintech Group brand and is not available to purchase from any other manufacturer.

Selected Validation Data



Various lysates were subjected to SDS PAGE followed by western blot with 66662-1-Ig (GOLGA2/GM130 antibody) at dilution of 1:10000 incubated at room temperature for 1.5 hours.