

ASF/SF2 Monoclonal antibody

Catalog Number: 66671-1-Ig **3 Publications**

Basic Information

Catalog Number: 66671-1-Ig	GenBank Accession Number: BC010264	Purification Method: Protein G purification
Size: 150ul , Concentration: 1000 ug/ml by Bradford method using BSA as the standard;	GeneID (NCBI): 6426	CloneNo.: 1A6C5
Source: Mouse	UNIPROT ID: Q07955	Recommended Dilutions: WB: 1:5000-1:50000 IP: 0.5-4.0 ug for 1.0-3.0 mg of total protein lysate IHC: 1:200-1:800 IF/ICC: 1:200-1:800
Isotype: IgG1	Full Name: splicing factor, arginine/serine-rich 1	
Immunogen Catalog Number: AG3626	Calculated MW: 248 aa, 28 kDa	
	Observed MW: 32 kDa, 28 kDa, 22 kDa	

Applications

Tested Applications: WB, IHC, IF/ICC, IP, ELISA	Positive Controls:
Cited Applications: IF, IP	WB : HeLa cells, LNCaP cells, HEK-293 cells, HepG2 cells, Jurkat cells, HSC-T6 cells, PC-12 cells, NIH/3T3 cells, RAW 264.7 cells
Species Specificity: Human, mouse, rat	IP : HeLa cells,
Cited Species: human, mouse, pig	IHC : human ovary tumor tissue, human gliomas tissue
Note-IHC: suggested antigen retrieval with TE buffer pH 9.0; (*) Alternatively, antigen retrieval may be performed with citrate buffer pH 6.0	IF/ICC : HepG2 cells,

Background Information

SFRS1, also named as ASF, SF2, SF2P33, SFRS1 and ASF-1, belongs to the splicing factor SR family. It plays a role in preventing exon skipping, ensuring the accuracy of splicing and regulating alternative splicing. SFRS1 interacts with other spliceosomal components, via the RS domains, to form a bridge between the 5'- and 3'-splice site binding components, U1 snRNP and U2AF. Isoform ASF-2 and isoform ASF-3 act as splicing repressors. This antibody can recognize all the 3 isoforms(28kd,33kd and 22kd) of SFRS1.

Notable Publications

Author	Pubmed ID	Journal	Application
Zi Yan	39659162	Acta Biochim Biophys Sin (Shanghai)	
Lu Li	39207136	J Virol	IF
Hannah C Happ	37205386	bioRxiv	IP

Storage

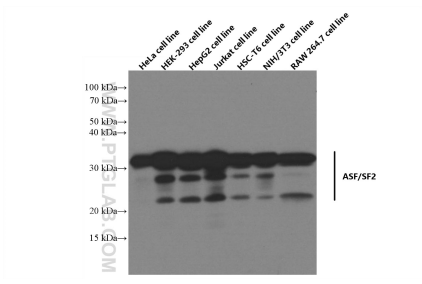
Storage:
Store at -20°C. Stable for one year after shipment.
Storage Buffer:
PBS with 0.02% sodium azide and 50% glycerol, pH7.3
 Aliquoting is unnecessary for -20°C storage

*** 20ul sizes contain 0.1% BSA

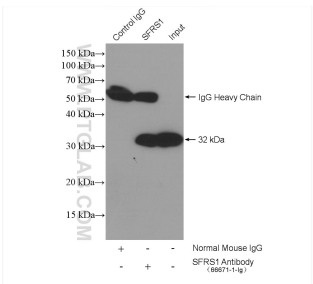
For technical support and original validation data for this product please contact:
 T: 1 (888) 4PTGLAB (1-888-478-4522) (toll free in USA), or 1(312) 455-8498 (outside USA)
 E: proteintech@ptglab.com
 W: ptglab.com

This product is exclusively available under Proteintech Group brand and is not available to purchase from any other manufacturer.

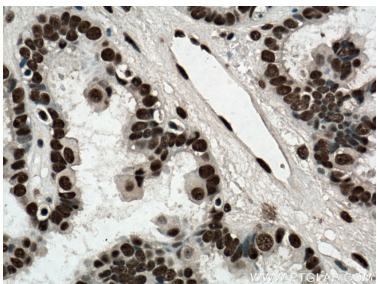
Selected Validation Data



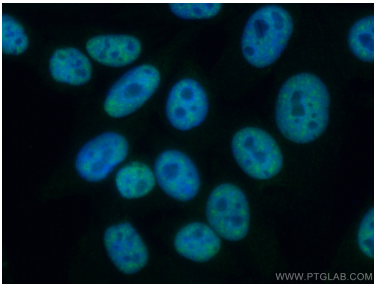
Various lysates were subjected to SDS PAGE followed by western blot with 66671-1-Ig (ASF/SF2 antibody) at dilution of 1:20000 incubated at room temperature for 1.5 hours.



IP result of anti-ASF/SF2 (IP:66671-1-Ig, 5ug; Detection:66671-1-Ig 1:5000) with HeLa cells lysate 2200 ug.



Immunohistochemical analysis of paraffin-embedded human ovary tumor tissue slide using 66671-1-Ig (ASF/SF2 antibody) at dilution of 1:400 (under 40x lens. Heat mediated antigen retrieval with Tris-EDTA buffer (pH 9.0).



Immunofluorescent analysis of (4% PFA) fixed HepG2 cells using ASF/SF2 antibody (66671-1-Ig, Clone: 1A6C5) at dilution of 1:400 and CoraLite®488-Conjugated Goat Anti-Mouse IgG(H+L).