

For Research Use Only

PLZF Monoclonal antibody

Catalog Number: 66672-1-Ig **6 Publications**



Basic Information

Catalog Number:

66672-1-Ig

Size:

150ul, Concentration: 1500 ug/ml by Nanodrop and 395 ug/ml by Bradford method using BSA as the standard;

Source:

Mouse

Isotype:

IgG1

Immunogen Catalog Number:

AG25180

GenBank Accession Number:

BC026902

GeneID (NCBI):

7704

UNIPROT ID:

Q05516

Full Name:

zinc finger and BTB domain containing 16

Calculated MW:

673 aa, 74 kDa

Observed MW:

75 kDa

Purification Method:

Protein G purification

CloneNo.:

2E6F12

Recommended Dilutions:

WB: 1:2000-1:10000

Applications

Tested Applications:

WB, ELISA

Cited Applications:

WB, IF

Species Specificity:

human, rat

Cited Species:

mouse

Positive Controls:

WB: Ramos cells, Raji cells, Daudi cells, HeLa cells, THP-1 cells, human testis tissue

Background Information

PLZF, also named as Zinc finger protein 145, is a 673 amino acid protein, which belongs to the krueppel C2H2-type zinc-finger protein family. PLZF is expressed in bone marrow, early myeloid cell lines and peripheral blood mononuclear cells. PLZF may play a role in myeloid maturation and in the development and/or maintenance of other differentiated tissues.

Notable Publications

Author	Pubmed ID	Journal	Application
Ziqian Min	36444304	iScience	WB
Tianxin Zhao	36493639	J Hazard Mater	WB
Pan-Pan Lai	36091371	Front Physiol	WB

Storage

Storage:

Store at -20°C. Stable for one year after shipment.

Storage Buffer:

PBS with 0.02% sodium azide and 50% glycerol, pH7.3

Aliquoting is unnecessary for -20°C storage

*** 20ul sizes contain 0.1% BSA

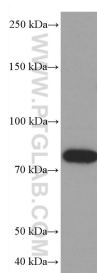
For technical support and original validation data for this product please contact:

T: 1 (888) 4PTGLAB (1-888-478-4522) (toll free in USA), or 1(312) 455-8498 (outside USA)

E: proteintech@ptglab.com
W: ptglab.com

This product is exclusively available under Proteintech Group brand and is not available to purchase from any other manufacturer.

Selected Validation Data



Ramos cells were subjected to SDS PAGE followed by western blot with 66672-1-Ig (PLZF antibody) at dilution of 1:5000 incubated at room temperature for 1.5 hours.