

MLKL Monoclonal antibody

Catalog Number: 66675-1-Ig

Featured Product

117 Publications

Basic Information

Catalog Number:

66675-1-Ig

Size:

150ul, Concentration: 2000 ug/ml by Nanodrop;

Source:

Mouse

Isotype:

IgG1

Immunogen Catalog Number:

AG15188

GenBank Accession Number:

BC028141

GeneID (NCBI):

197259

UNIPROT ID:

Q8NB16

Full Name:

mixed lineage kinase domain-like

Calculated MW:

471 aa, 54 kDa

Observed MW:

35-40 kDa, 50-55 kDa

Purification Method:

Protein G purification

CloneNo.:

3D4C6

Recommended Dilutions:

WB: 1:5000-1:50000

IHC: 1:500-1:2000

IF-P: 1:50-1:500

IF/ICC: 1:400-1:1600

Applications

Tested Applications:

WB, IHC, IF/ICC, IF-P, ELISA

Cited Applications:

WB, IHC, IF, IP, CoIP

Species Specificity:

human, mouse

Cited Species:

human, mouse, rat, zebrafish

Note-IHC: suggested antigen retrieval with TE buffer pH 9.0; (*) Alternatively, antigen retrieval may be performed with citrate buffer pH 6.0

Positive Controls:

WB: HT-29 cells, 4T1 cells, PC-3 cells, HeLa cells, HepG2 cells, NIH/3T3 cells, mMSCs cells

IHC: human liver cancer tissue, human colon cancer tissue

IF-P: human liver cancer tissue,

IF/ICC: HepG2 cells,

Background Information

Mixed lineage kinase domain like pseudokinase (MLKL), belongs to the protein kinase superfamily and has two MW of 54 and 30 kDa. MLKL plays a critical role in tumor necrosis factor (TNF)-induced necroptosis, a programmed cell death process, via interaction with receptor-interacting protein 3 (RIP3), which is a key signaling molecule in the necroptosis pathway. High levels of this protein and RIP3 are associated with inflammatory bowel disease in children. The 66675-1-Ig antibody recognizes 54 kDa MLKL monomer, 216 kDa MLKL tetramer, and a band around 45-50 kDa which are similar to papers published. (PMID: 31848291). MLKL can be detected as a 35kDa truncated isoform (PMID: 35965541).

Notable Publications

Author	Pubmed ID	Journal	Application
Ying Tu	36155221	Environ Pollut	WB,IF
Xiao-Ling Zhou	33041798	Front Pharmacol	WB
Lu Yuan	32918989	Food Chem Toxicol	WB

Storage

Storage:

Store at -20°C. Stable for one year after shipment.

Storage Buffer:

PBS with 0.02% sodium azide and 50% glycerol, pH7.3

Aliquoting is unnecessary for -20°C storage

*** 20ul sizes contain 0.1% BSA

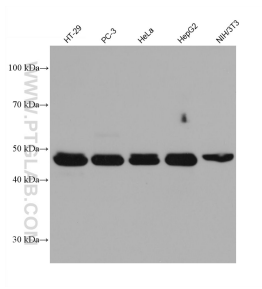
For technical support and original validation data for this product please contact:

T: 1 (888) 4PTGLAB (1-888-478-4522) (toll free in USA), or 1(312) 455-8498 (outside USA)

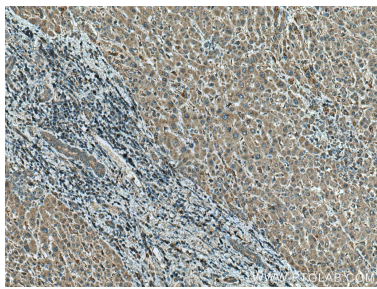
E: proteintech@ptglab.com
 W: ptglab.com

This product is exclusively available under Proteintech Group brand and is not available to purchase from any other manufacturer.

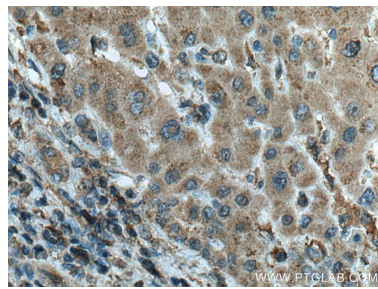
Selected Validation Data



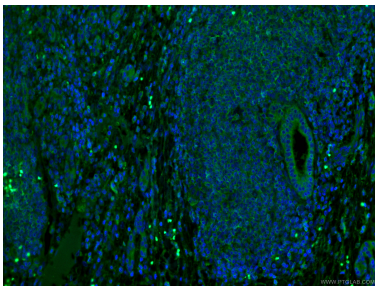
Various lysates were subjected to SDS PAGE followed by western blot with 66675-1-Ig (MLKL antibody) at dilution of 1:10000 incubated at room temperature for 1.5 hours.



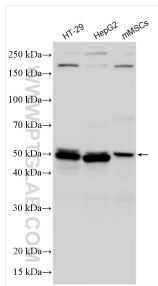
Immunohistochemical analysis of paraffin-embedded human liver cancer tissue slide using 66675-1-Ig (MLKL antibody) at dilution of 1:1000 (under 10x lens). Heat mediated antigen retrieval with Tris-EDTA buffer (pH 9.0).



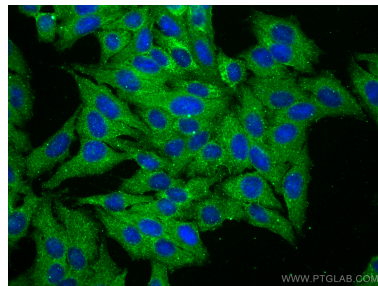
Immunohistochemical analysis of paraffin-embedded human liver cancer tissue slide using 66675-1-Ig (MLKL antibody) at dilution of 1:1000 (under 40x lens). Heat mediated antigen retrieval with Tris-EDTA buffer (pH 9.0).



Immunofluorescent analysis of (4% PFA) fixed human liver cancer tissue using 66675-1-Ig (MLKL antibody) at dilution of 1:100 and CoraLite488-Conjugated AffiniPure Goat Anti-Mouse IgG(H+L).



Various lysates were subjected to SDS PAGE followed by western blot with 66675-1-Ig (MLKL antibody) at dilution of 1:8000 incubated at room temperature for 1.5 hours.



Immunofluorescent analysis of (-20°C Ethanol) fixed HepG2 cells using MLKL antibody (66675-1-Ig, Clone: 3D4C6) at dilution of 1:800 and Multi-rAb CoraLite ® Plus 488-Goat Anti-Mouse Recombinant Secondary Antibody (H+L) (RGAM002).