

For Research Use Only

# Cytokeratin 13 Monoclonal antibody

Catalog Number: 66684-1-Ig

Featured Product



## Basic Information

Catalog Number:

66684-1-Ig

GenBank Accession Number:

BC002661

Purification Method:

Protein G purification

Size:

150ul, Concentration: 1500 ug/ml by

Nanodrop and 1000 ug/ml by Bradford

method using BSA as the standard;

GeneID (NCBI):

3860

UNIPROT ID:

P13646

CloneNo.:

1E10G2

Recommended Dilutions:

WB 1:5000-1:50000

IHC 1:1000-1:4000

IF-P 1:200-1:800

Source:

Mouse

Full Name:

keratin 13

Isotype:

IgG1

Calculated MW:

50 kDa

Immunogen Catalog Number:

AG0217

Observed MW:

50 kDa

## Applications

Tested Applications:

WB, IHC, IF-P, ELISA

Species Specificity:

human, rat

Positive Controls:

WB : A431 cells, rat skin tissue

IHC : human cervical cancer tissue, human oesophagus cancer tissue

IF-P : human cervical cancer tissue,

**Note-IHC: suggested antigen retrieval with TE buffer pH 9.0; (\*) Alternatively, antigen retrieval may be performed with citrate buffer pH 6.0**

## Background Information

Keratins are a large family of proteins that form the intermediate filament cytoskeleton of epithelial cells, which are classified into two major sequence types. Type I keratins are a group of acidic intermediate filament proteins, including K9-K23, and the hair keratins Ha1-Ha8. Type II keratins are the basic or neutral counterparts to the acidic type I keratins, including K1-K8, and the hair keratins, Hb1-Hb6. This type I cytokeratin is paired with keratin 4 and expressed in the suprabasal layers of non-cornified stratified epithelia. The Keratin 13 (KRT13) gene encodes a type I acidic keratin which is expressed in the differentiated cells of non-cornified stratified squamous epithelia. This antibody can react with Cytokeratin 15.

## Storage

Storage:

Store at -20°C. Stable for one year after shipment.

Storage Buffer:

PBS with 0.02% sodium azide and 50% glycerol, pH7.3

Aliquoting is unnecessary for -20°C storage

\*\*\* 20ul sizes contain 0.1% BSA

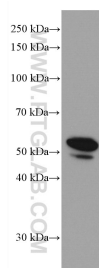
For technical support and original validation data for this product please contact:

T: 1 (888) 4PTGLAB (1-888-478-4522) (toll free in USA), or 1(312) 455-8498 (outside USA)

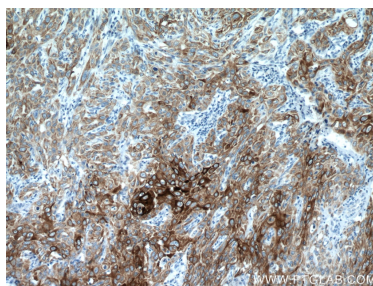
E: [proteintech@ptglab.com](mailto:proteintech@ptglab.com)  
W: [ptglab.com](http://ptglab.com)

This product is exclusively available under Proteintech Group brand and is not available to purchase from any other manufacturer.

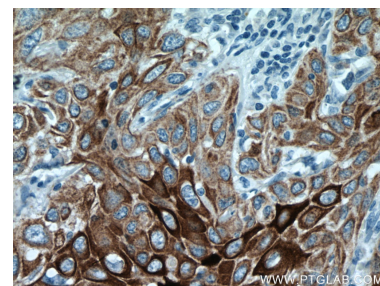
## Selected Validation Data



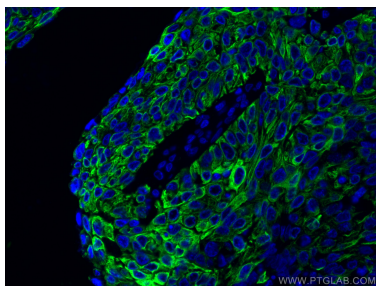
A431 cells were subjected to SDS PAGE followed by western blot with 66684-1-Ig (KRT13 antibody) at dilution of 1:10000 incubated at room temperature for 1.5 hours.



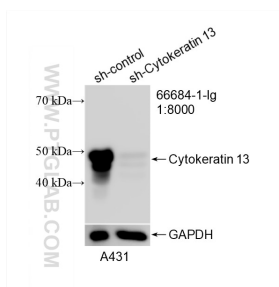
Immunohistochemical analysis of paraffin-embedded human cervical cancer tissue slide using 66684-1-Ig (KRT13 antibody) at dilution of 1:2000 (under 10x lens. Heat mediated antigen retrieval with Tris-EDTA buffer (pH 9.0).



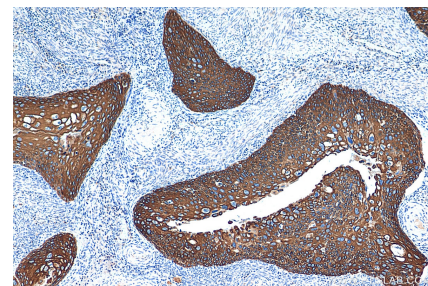
Immunohistochemical analysis of paraffin-embedded human cervical cancer tissue slide using 66684-1-Ig (KRT13 antibody) at dilution of 1:2000 (under 40x lens. Heat mediated antigen retrieval with Tris-EDTA buffer (pH 9.0).



Immunofluorescent analysis of (4% PFA) fixed human cervical cancer tissue using Cytokeratin 13 antibody (66684-1-Ig, Clone: 1E10G2 ) at dilution of 1:400 and CoraLite®488-Conjugated AffiniPure Goat Anti-Mouse IgG(H+L).



WB result of Cytokeratin 13 antibody (66684-1-Ig; 1:8000; incubated at room temperature for 1.5 hours) with sh-Control and sh-Cytokeratin 13 transfected A431 cells.



Immunohistochemical analysis of paraffin-embedded human cervical cancer tissue slide using 66684-1-Ig (Cytokeratin 13 antibody) at dilution of 1:1000 (under 10x lens). Heat mediated antigen retrieval with Tris-EDTA buffer (pH 9.0).