

For Research Use Only

CALD1 Monoclonal antibody

Catalog Number: 66693-1-Ig

Featured Product

3 Publications



Basic Information

Catalog Number:

66693-1-Ig

GenBank Accession Number:

BC040354

Purification Method:

Protein A purification

Size:

150ul, Concentration: 1381 ug/ml by 800 Nanodrop and 1000 ug/ml by Bradford method using BSA as the standard;

GeneID (NCBI):

800

CloneNo.:

1E1C11

Source:

Mouse

UNIPROT ID:

Q05682

Recommended Dilutions:

WB 1:2000-1:10000

IHC 1:2000-1:8000

IF/ICC 1:200-1:800

Isotype:

IgG2b

Full Name:

caldesmon 1

Calculated MW:

538 aa, 63 kDa

Immunogen Catalog Number:

AG13676

Observed MW:

70 kDa-75 kDa

Applications

Tested Applications:

WB, IHC, IF/ICC, FC (Intra), ELISA

Cited Applications:

WB, IF

Species Specificity:

human, mouse, rat

Cited Species:

human

Note-IHC: suggested antigen retrieval with TE buffer pH 9.0; (*) Alternatively, antigen retrieval may be performed with citrate buffer pH 6.0

Positive Controls:

WB: NCI-H1299 cells, HeLa cells, U2OS cells, HepG2 cells, PC-3 cells, SKOV-3 cells, A2780 cells, HSC-T6 cells, NIH/3T3 cells, 4T1 cells, Calu-1 cells, Caco-2 cells, Caki-1 cells, MCF-10A cells, LNCaP cells, SK-N-SH cells

IHC: human colon cancer tissue, human colon tissue, human hystero myoma tissue, mouse colon tissue

IF/ICC: HepG2 cells, HeLa cells

Notable Publications

Author	Pubmed ID	Journal	Application
Yuzo Yoshida	35806129	Int J Mol Sci	IF
Hongyu Su	39476475	Placenta	WB
Yaowen Zhang	38322113	Int J Clin Pract	WB

Storage

Storage:

Store at -20°C. Stable for one year after shipment.

Storage Buffer:

PBS with 0.02% sodium azide and 50% glycerol pH 7.3.

Aliquoting is unnecessary for -20°C storage

*** 20ul sizes contain 0.1% BSA

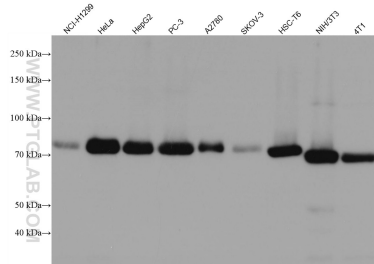
For technical support and original validation data for this product please contact:

T: 1 (888) 4PTGLAB (1-888-478-4522) (toll free in USA), or 1(312) 455-8498 (outside USA)

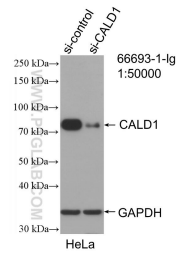
E: proteintech@ptglab.com
W: ptglab.com

This product is exclusively available under Proteintech Group brand and is not available to purchase from any other manufacturer.

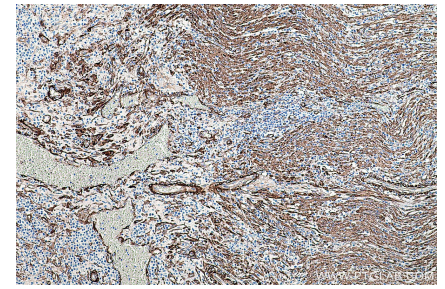
Selected Validation Data



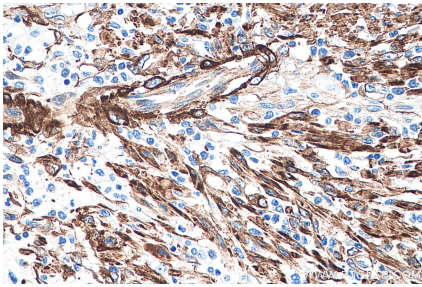
Various lysates were subjected to SDS PAGE followed by western blot with 66693-1-Ig (CALD1 antibody) at dilution of 1:10000 incubated at room temperature for 1.5 hours.



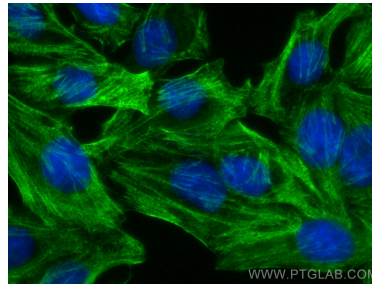
WB result of CALD1 antibody (66693-1-Ig; 1:50000; incubated at room temperature for 1.5 hours) with sh-Control and sh-CALD1 transfected HeLa cells.



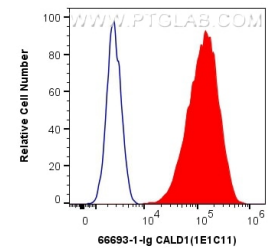
Immunohistochemical analysis of paraffin-embedded human colon cancer tissue slide using 66693-1-Ig (CALD1 antibody) at dilution of 1:4000 (under 10x lens). Heat mediated antigen retrieval with Tris-EDTA buffer (pH 9.0).



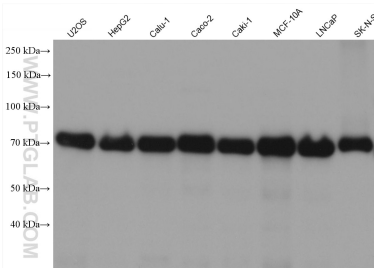
Immunohistochemical analysis of paraffin-embedded human colon cancer tissue slide using 66693-1-Ig (CALD1 antibody) at dilution of 1:4000 (under 40x lens). Heat mediated antigen retrieval with Tris-EDTA buffer (pH 9.0).



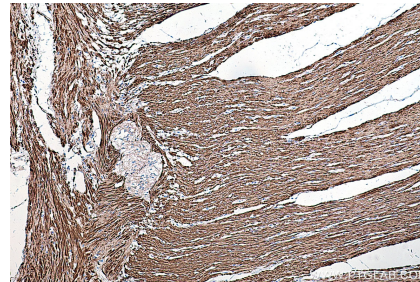
Immunofluorescent analysis of (-20°C Methanol) fixed HepG2 cells using CALD1 antibody (66693-1-Ig, Clone: 1E1C11) at dilution of 1:400 and CoraLite@488-Conjugated AffiniPure Goat Anti-Mouse IgG(H+L).



1X10⁶ HeLa cells were intracellularly stained with 0.4 ug Anti-Human CALD1 (66693-1-Ig, Clone: 1E1C11) and CoraLite@488-Conjugated AffiniPure Goat Anti-Mouse IgG(H+L) at dilution 1:1000 (red), or 0.4 ug Mouse IgG2b Isotype Control (MPC-11) (65128-1-Ig, Clone: MPC-11) (blue). Cells were fixed with 4% PFA and permeabilized with Flow Cytometry Perm Buffer (PF00011-C).



Various lysates were subjected to SDS PAGE followed by western blot with 66693-1-Ig (CALD1 antibody) at dilution of 1:20000 incubated at room temperature for 1.5 hours.



Immunohistochemical analysis of paraffin-embedded human colon tissue slide using 66693-1-Ig (CALD1 antibody) at dilution of 1:4000 (under 10x lens). Heat mediated antigen retrieval with Tris-EDTA buffer (pH 9.0).