

For Research Use Only

ATP5O Monoclonal antibody

Catalog Number: 66696-1-Ig **1 Publications**



Basic Information

Catalog Number: 66696-1-Ig	GenBank Accession Number: BC021233	Purification Method: Protein G purification
Size: 150ul , Concentration: 1000 ug/ml by Bradford method using BSA as the standard;	GeneID (NCBI): 539	CloneNo.: 1D3B8
Source: Mouse	UNIPROT ID: P48047	Recommended Dilutions: WB 1:2000-1:10000 IHC 1:500-1:2000 IF/ICC 1:50-1:500
Isotype: IgG1	Full Name: ATP synthase, H ⁺ transporting, mitochondrial F1 complex, O subunit	
Immunogen Catalog Number: AG1458	Calculated MW: 23 kDa	
	Observed MW: 23-25 kDa	

Applications

Tested Applications: WB, IHC, IF/ICC, ELISA	Positive Controls: WB : HeLa cells, HEK-293 cells, HepG2 cells, LNCaP cells, A549 cells, NCI-H1299 cells, Jurkat cells, K-562 cells, THP-1 cells IHC : human liver cancer tissue, human colon cancer tissue IF/ICC : HeLa cells,
Cited Applications: WB	
Species Specificity: human	
Cited Species: human	
Note-IHC: suggested antigen retrieval with TE buffer pH 9.0; (*) Alternatively, antigen retrieval may be performed with citrate buffer pH 6.0	

Background Information

ATP5O(ATP synthase subunit O, mitochondrial) is also named as ATPO, OSCP and belongs to the ATPase delta chain family. The gene encodes the oligomycin sensitivity-conferring protein (OSCP) of ATP synthase. The predicted polypeptide is 213 amino acids long with more than 80% identity to the bovine and mouse homologs and it is expressed at highest levels in muscle and heart by the northern blot(PMID:7490082). Many studies have indicated that mitochondrial dysfunction is central to the development of most age-related human diseases including neurodegenerative diseases, cancer, and type 2 diabetes.

Notable Publications

Author	Pubmed ID	Journal	Application
Gregory A Wyant	35926043	Science	WB

Storage

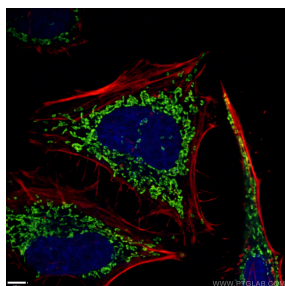
Storage:
Store at -20°C. Stable for one year after shipment.
Storage Buffer:
PBS with 0.02% sodium azide and 50% glycerol, pH7.3
Aliquoting is unnecessary for -20°C storage

*** 20ul sizes contain 0.1% BSA

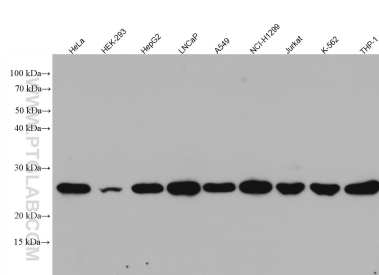
For technical support and original validation data for this product please contact:
T: 1 (888) 4PTGLAB (1-888-478-4522) (toll free in USA), or 1(312) 455-8498 (outside USA)
E: proteintech@ptglab.com
W: ptglab.com

This product is exclusively available under Proteintech Group brand and is not available to purchase from any other manufacturer.

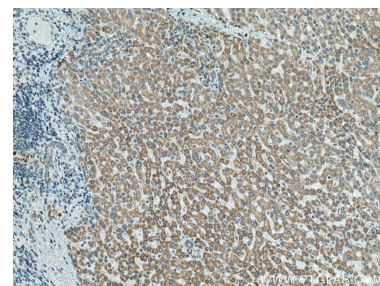
Selected Validation Data



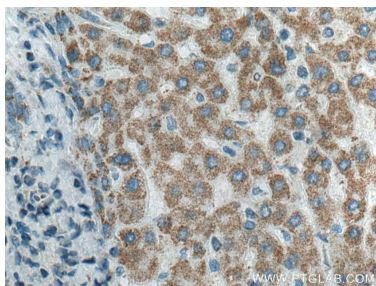
Immunofluorescent analysis of (4% PFA) fixed HeLa cells using 66696-1-Ig (ATP5O antibody), at dilution of 1:200 and CoraLite® 488-Conjugated AffiniPure Goat Anti-Mouse IgG(H+L).



Various lysates were subjected to SDS PAGE followed by western blot with 66696-1-Ig (ATP5O antibody) at dilution of 1:5000 incubated at room temperature for 1.5 hours.



Immunohistochemical analysis of paraffin-embedded human liver cancer tissue slide using 66696-1-Ig (ATP5O antibody) at dilution of 1:1000 (under 10x lens). Heat mediated antigen retrieval with Tris-EDTA buffer (pH 9.0).



Immunohistochemical analysis of paraffin-embedded human liver cancer tissue slide using 66696-1-Ig (ATP5O antibody) at dilution of 1:1000 (under 40x lens). Heat mediated antigen retrieval with Tris-EDTA buffer (pH 9.0).