

For Research Use Only

RHOA Monoclonal antibody

Catalog Number: 66733-1-Ig **5 Publications**



Basic Information

Catalog Number: 66733-1-Ig	GenBank Accession Number: BC005976	Purification Method: Protein G purification
Size: 150ul , Concentration: 1500 µg/ml by Bradford method using BSA as the standard;	GeneID (NCBI): 387	CloneNo.: 1B3D7
Source: Mouse	Full Name: ras homolog gene family, member A	Recommended Dilutions: WB 1:500-1:2000 IHC 1:50-1:500 IF 1:50-1:500
Isotype: IgG1	Calculated MW: 22 kDa	
Immunogen Catalog Number: AG1141	Observed MW: 22 kDa	

Applications

Tested Applications: IF, IHC, WB, ELISA	Positive Controls: WB : HeLa cells, HEK-293 cells, Jurkat cells IHC : human colon cancer tissue, IF : HeLa cells,
Cited Applications: IHC, WB	
Species Specificity: Human, mouse, pig, rat	
Cited Species: human	
Note-IHC: suggested antigen retrieval with TE buffer pH 9.0; (*) Alternatively, antigen retrieval may be performed with citrate buffer pH 6.0	

Background Information

RhoA is a member of the Rho family of small GTPases, which cycle between inactive GDP-bound and active GTP-bound states and function as molecular switches in signal transduction cascades. Rho proteins promote reorganization of the actin cytoskeleton and regulate cell shape, attachment, and motility. Overexpression of RhoA is associated with tumor cell proliferation and metastasis. RhoA signalling is critical to many cellular processes including migration, mechanotransduction, and is often disrupted in carcinogenesis.

Notable Publications

Author	Pubmed ID	Journal	Application
Liu Jie	34093790	J Cancer	WB
Xueying Hu	33480975	Clin Sci (Lond)	WB
Guanchu Song	32014444	Exp Cell Res	WB

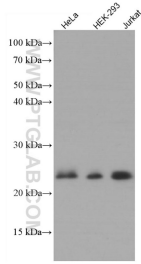
Storage

Storage:
Store at -20°C. Stable for one year after shipment.
Storage Buffer:
PBS with 0.02% sodium azide and 50% glycerol pH 7.3.
Aliquoting is unnecessary for -20°C storage

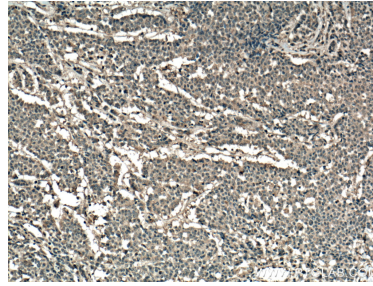
For technical support and original validation data for this product please contact:
T: 1 (888) 4PTGLAB (1-888-478-4522) (toll free in USA), or 1(312) 455-8498 (outside USA)
E: proteintech@ptglab.com
W: ptglab.com

This product is exclusively available under Proteintech Group brand and is not available to purchase from any other manufacturer.

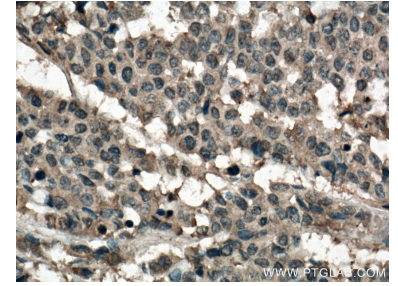
Selected Validation Data



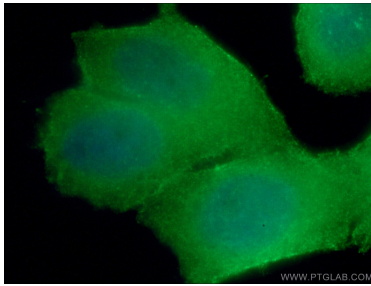
Various lysates were subjected to SDS PAGE followed by western blot with 66733-1-Ig (RHOA antibody) at dilution of 1:1500 incubated at room temperature for 1.5 hours.



Immunohistochemical analysis of paraffin-embedded human colon cancer tissue slide using 66733-1-Ig (RHOA antibody) at dilution of 1:200 (under 10x lens. Heat mediated antigen retrieval with Tris-EDTA buffer (pH 9.0).



Immunohistochemical analysis of paraffin-embedded human colon cancer tissue slide using 66733-1-Ig (RHOA antibody) at dilution of 1:200 (under 40x lens. Heat mediated antigen retrieval with Tris-EDTA buffer (pH 9.0).



Immunofluorescent analysis of (4% PFA) fixed HeLa cells using 66733-1-Ig (RHOA antibody) at dilution of 1:100 and Alexa Fluor 488-Conjugated AffiniPure Goat Anti-Mouse IgG(H+L).