

For Research Use Only

BACH1 Monoclonal antibody

Catalog Number: 66762-1-Ig

Featured Product

5 Publications



Basic Information

Catalog Number:

66762-1-Ig

Size:

150ul, Concentration: 1000 ug/ml by 571

Nanodrop;

Source:

Mouse

Isotype:

IgG1

Immunogen Catalog Number:

AG6011

GenBank Accession Number:

BC063307

GeneID (NCBI):

571

ENSEMBL Gene ID:

ENSG00000156273

UNIPROT ID:

O14867

Full Name:

BTB and CNC homology 1, basic
leucine zipper transcription factor 1

Calculated MW:

82 kDa

Observed MW:

100-110 kDa

Purification Method:

Protein G purification

CloneNo.:

2D12A4

Recommended Dilutions:

WB: 1:1000-1:6000

IHC: 1:50-1:500

Applications

Tested Applications:

WB, IHC, ELISA

Cited Applications:

WB, IF, ChIP

Species Specificity:

human, rat

Cited Species:

human, mouse

**Note-IHC: suggested antigen retrieval with
TE buffer pH 9.0; (*) Alternatively, antigen
retrieval may be performed with citrate
buffer pH 6.0**

Positive Controls:

WB : HeLa cells, HEK-293 cells, HSC-T6 cells, Jurkat
cells, K-562 cells, Raji cells

IHC : human lung cancer tissue,

Background Information

BTB and CNC homology 1, basic leucine zipper transcription factor 1(BACH1) is a heme-regulated transcriptional regulator that acts as a repressor or activator and a member of the AP-1 superfamily. MafK belongs to the small Maf family that can function as transcriptional activators or repressors depending on the proteins with which they form heterodimers. BACH1 has crucial roles in both stress responses and transformation by H-RasV12. The molecular weight of expected mobility Bach1 is 100-110 kDa.

Notable Publications

Author	Pubmed ID	Journal	Application
Kenshiro Takemoto	36178067	Cancer Sci	WB
Dengliang Lei	40169936	Cell Mol Biol Lett	IF
Ting-Ting Liu	40127855	Exp Neurol	WB,IF,ChIP

Storage

Storage:

Store at -20°C. Stable for one year after shipment.

Storage Buffer:

PBS with 0.02% sodium azide and 50% glycerol, pH7.3

Aliquoting is unnecessary for -20°C storage

*** 20ul sizes contain 0.1% BSA

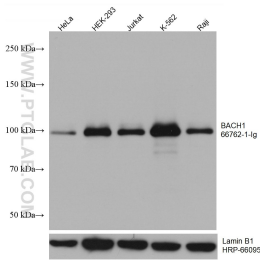
For technical support and original validation data for this product please contact:

T: 1 (888) 4PTGLAB (1-888-478-4522) (toll free
in USA), or 1(312) 455-8498 (outside USA)

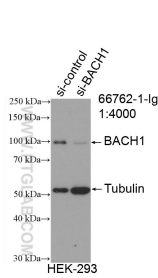
E: proteintech@ptglab.com
W: ptglab.com

This product is exclusively available under Proteintech
Group brand and is not available to purchase from any
other manufacturer.

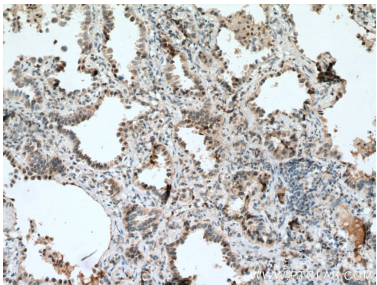
Selected Validation Data



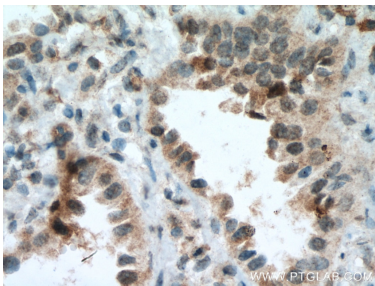
Various lysates were subjected to SDS PAGE followed by western blot with 66762-1-Ig (BACH1 antibody) at dilution of 1:3000 incubated at room temperature for 1.5 hours. The membrane was stripped and reblotted with HRP-conjugated Lamin B1 Monoclonal antibody (HRP-66095) as loading control.



WB result of BACH1 antibody (66762-1-Ig; 1:4000; incubated at room temperature for 1.5 hours) with sh-Control and sh-BACH1 transfected HEK-293 cells.



Immunohistochemical analysis of paraffin-embedded human lung cancer tissue slide using 66762-1-Ig (BACH1 antibody) at dilution of 1:100 (under 10x lens. Heat mediated antigen retrieval with Tris-EDTA buffer (pH 9.0).



Immunohistochemical analysis of paraffin-embedded human lung cancer tissue slide using 66762-1-Ig (BACH1 antibody) at dilution of 1:100 (under 40x lens. Heat mediated antigen retrieval with Tris-EDTA buffer (pH 9.0).