

For Research Use Only

CRM1 Monoclonal antibody

Catalog Number: 66763-1-Ig **5 Publications**



Basic Information

Catalog Number: 66763-1-Ig	GenBank Accession Number: BC032847	Purification Method: Protein G purification
Size: 150ul , Concentration: 1000 µg/ml by Bradford method using BSA as the standard;	GeneID (NCBI): 7514	CloneNo.: 2D3B6
Source: Mouse	Full Name: exportin 1 (CRM1 homolog, yeast)	Recommended Dilutions: WB 1:5000-1:50000
Isotype: IgG1	Calculated MW: 1071 aa, 123 kDa	
Immunogen Catalog Number: AG27337	Observed MW: 100-110 kDa	

Applications

Tested Applications: WB, ELISA	Positive Controls: WB : A431 cells, HeLa cells, HepG2 cells, Jurkat cells, K-562 cells, HSC-T6 cells, PC-12 cells, NIH/3T3 cells, RAW 264.7 cells, HEK-293 cells
Cited Applications: WB	
Species Specificity: Human, Mouse, Rat	
Cited Species: human, mouse, rat	

Background Information

CRM1 (chromosome region maintenance 1, also known as exportin-1 or XPO1), a member of the karyopherin β family of transport receptors, is an important nuclear export receptor recognizing proteins bearing a leucine-rich nuclear export signal (PMID: 9323133). CRM1 is the major receptor for the export of proteins out of the nucleus and is also required for transport of many RNAs (PMID: 17317185). In addition to nuclear export, CRM1 also plays a role in centrosome duplication and spindle assembly (PMID: 22773955). Elevated CRM1 expression has been reported in several cancers, which implicates CRM1 as a potential anti-cancer drug target (PMID: 22677130; 21683812).

Notable Publications

Author	Pubmed ID	Journal	Application
Xiaogang Chen	32467578	Cell Death Dis	WB
Jianning Xu	31326389	Exp Cell Res	WB
Mu Zhang	33569632	Diabetologia	WB

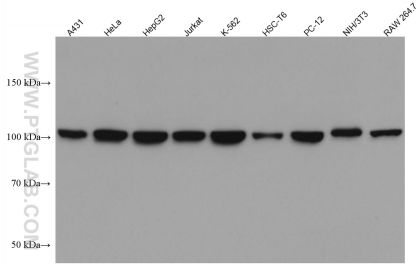
Storage

Storage:
Store at -20°C. Stable for one year after shipment.
Storage Buffer:
PBS with 0.02% sodium azide and 50% glycerol pH 7.3.
Aliquoting is unnecessary for -20°C storage

For technical support and original validation data for this product please contact:
T: 1 (888) 4PTGLAB (1-888-478-4522) (toll free in USA), or 1(312) 455-8498 (outside USA)
E: proteintech@ptglab.com
W: ptglab.com

This product is exclusively available under Proteintech Group brand and is not available to purchase from any other manufacturer.

Selected Validation Data



Various lysates were subjected to SDS PAGE followed by western blot with 66763-1-Ig (CRM1 antibody) at dilution of 1:10000 incubated at room temperature for 1.5 hours.