

For Research Use Only

# ROCK1 Monoclonal antibody

Catalog Number: 66782-1-Ig

Featured Product

4 Publications



## Basic Information

Catalog Number:

66782-1-Ig

Size:

150ul, Concentration: 1100 ug/ml by Nanodrop and 800 ug/ml by Bradford method using BSA as the standard;

Source:

Mouse

Isotype:

IgG1

Immunogen Catalog Number:

AG16317

GenBank Accession Number:

BC113114

GeneID (NCBI):

6093

UNIPROT ID:

Q13464

Full Name:

Rho-associated, coiled-coil containing protein kinase 1

Calculated MW:

1354 aa, 158 kDa

Observed MW:

150-160 kDa

Purification Method:

Protein G purification

CloneNo.:

3G5E12

Recommended Dilutions:

WB: 1:1000-1:4000

## Applications

Tested Applications:

WB, ELISA

Cited Applications:

WB, IHC

Species Specificity:

human, mouse, rat

Cited Species:

human, mouse

Positive Controls:

WB: HeLa cells, HEK-293 cells, HepG2 cells, Jurkat cells, HSC-T6 cells, NIH/3T3 cells, RAW 264.7 cells

## Background Information

ROCK1, also named as p160ROCK and NY-REN-35, belongs to the protein kinase superfamily and AGC Ser/Thr protein kinase family. ROCK1 phosphorylates and activates DAPK3, which then regulates myosin light chain phosphatase through phosphorylation of MYPT1 thereby regulating the assembly of the actin cytoskeleton, cell migration, invasiveness of tumor cells, smooth muscle contraction and neurite outgrowth. ROCK1 is required for centromere positioning and centromere-dependent exit from mitosis. It is necessary for apoptotic membrane blebbing. ROCK1 catalyzes the reaction: ATP + a protein = ADP + a phosphoprotein.

## Notable Publications

Author	Pubmed ID	Journal	Application
Shuo Yang	36326134	Food Funct	WB
Ranran Dai	31898364	J Cell Biochem	WB
Qian Ban	32913548	Am J Transl Res	WB

## Storage

Storage:

Store at -20°C. Stable for one year after shipment.

Storage Buffer:

PBS with 0.02% sodium azide and 50% glycerol, pH7.3

Aliquoting is unnecessary for -20°C storage

\*\*\* 20ul sizes contain 0.1% BSA

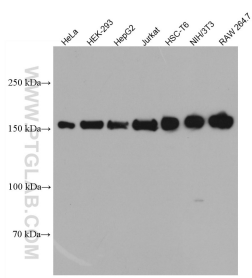
For technical support and original validation data for this product please contact:

T: 1 (888) 4PTGLAB (1-888-478-4522) (toll free in USA), or 1(312) 455-8498 (outside USA)

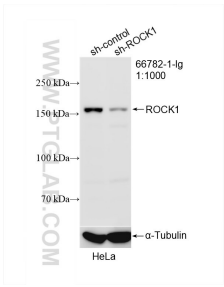
E: [proteintech@ptglab.com](mailto:proteintech@ptglab.com)  
W: [ptglab.com](http://ptglab.com)

This product is exclusively available under Proteintech Group brand and is not available to purchase from any other manufacturer.

Selected Validation Data



Various lysates were subjected to SDS PAGE followed by western blot with 66782-1-Ig (ROCK1 antibody) at dilution of 1:2000 incubated at room temperature for 1.5 hours.



WB result of ROCK1 antibody (66782-1-Ig; 1:1000; incubated at room temperature for 1.5 hours) with sh-Control and sh-ROCK1 transfected HeLa cells.