

For Research Use Only

# Bcl2 Monoclonal antibody

Catalog Number: 66799-1-Ig **28 Publications**



## Basic Information

<b>Catalog Number:</b> 66799-1-Ig	<b>GenBank Accession Number:</b> NM-009741	<b>Purification Method:</b> Protein G purification
<b>Size:</b> 150ul , Concentration: 3000 ug/ml by Nanodrop and 1387 ug/ml by Bradford method using BSA as the standard;	<b>GeneID (NCBI):</b> 12043	<b>CloneNo.:</b> 1B5B9
<b>Source:</b> Mouse	<b>UNIPROT ID:</b> P10417	<b>Recommended Dilutions:</b> WB: 1:500-1:2000 IF/ICC: 1:200-1:800
<b>Isotype:</b> IgG1	<b>Full Name:</b> B-cell leukemia/lymphoma 2	
<b>Immunogen Catalog Number:</b> AG24261	<b>Calculated MW:</b> 26 kDa	
	<b>Observed MW:</b> 26 kDa	

## Applications

<b>Tested Applications:</b> WB, IF/ICC, ELISA	<b>Positive Controls:</b> WB : NIH/3T3 cells, RAW 264.7 cells, mouse brain tissue, C2C12 cells, 4T1 cells IF/ICC : NIH/3T3 cells,
<b>Cited Applications:</b> WB, IF, IP	
<b>Species Specificity:</b> mouse	
<b>Cited Species:</b> human, mouse, rat	

## Background Information

Bcl2 is a member of the B cell lymphoma 2 protein family. Members of this family regulate cell death in multiple cell types and can have either proapoptotic or antiapoptotic activities. The protein encoded by this gene inhibits mitochondrial-mediated apoptosis. This protein is an integral outer mitochondrial membrane protein that functions as part of signaling pathway that controls mitochondrial permeability in response to apoptotic stimuli. This protein may also play a role in neuron cell survival and autophagy. Abnormal expression and chromosomal translocations of this gene are associated with cancer progression in numerous tissues.

## Notable Publications

Author	Pubmed ID	Journal	Application
Chen Chen	30412827	Redox Biol	
Xiaohua Lei	32400797	Food Funct	WB
Ran Zhang	33979163	J Nat Prod	WB

## Storage

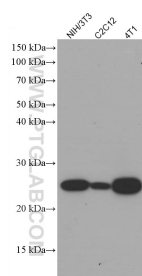
**Storage:**  
Store at -20°C. Stable for one year after shipment.  
**Storage Buffer:**  
PBS with 0.02% sodium azide and 50% glycerol, pH7.3  
Aliquoting is unnecessary for -20°C storage

\*\*\* 20ul sizes contain 0.1% BSA

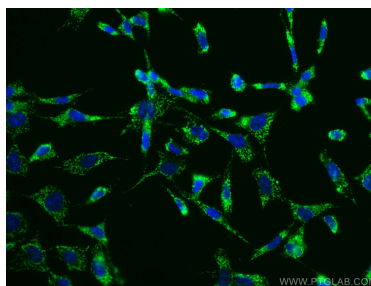
For technical support and original validation data for this product please contact:  
T: 1 (888) 4PTGLAB (1-888-478-4522) (toll free in USA), or 1(312) 455-8498 (outside USA)  
E: proteintech@ptglab.com  
W: ptglab.com

This product is exclusively available under Proteintech Group brand and is not available to purchase from any other manufacturer.

## Selected Validation Data



Various lysates were subjected to SDS PAGE followed by western blot with 66799-1-Ig (Bcl2 antibody) at dilution of 1:1400 incubated at room temperature for 1.5 hours.



Immunofluorescent analysis of (-20°C Ethanol) fixed NIH/3T3 cells using Bcl2 antibody (66799-1-Ig, Clone: 1B5B9) at dilution of 1:100 and CoraLite®488-Conjugated AffiniPure Goat Anti-Mouse IgG(H+L).