

For Research Use Only

Cytokeratin 16 Monoclonal antibody

Catalog Number: 66802-1-Ig

Featured Product

4 Publications



Basic Information

Catalog Number:

66802-1-Ig

Size:

150ul, Concentration: 1000 ug/ml by Nanodrop and 541 ug/ml by Bradford method using BSA as the standard;

Source:

Mouse

Isotype:

IgG1

Immunogen Catalog Number:

AG11240

GenBank Accession Number:

BC039169

GeneID (NCBI):

3868

UNIPROT ID:

P08779

Full Name:

keratin 16

Calculated MW:

473 aa, 51 kDa

Observed MW:

51 kDa

Purification Method:

Protein G purification

CloneNo.:

2H4D8

Recommended Dilutions:

WB 1:5000-1:50000

IHC 1:2000-1:8000

IF/ICC 1:200-1:800

Applications

Tested Applications:

WB, IHC, IF/ICC, ELISA

Cited Applications:

WB, IHC, IF

Species Specificity:

human

Cited Species:

human

Note-IHC: suggested antigen retrieval with TE buffer pH 9.0; (*) Alternatively, antigen retrieval may be performed with citrate buffer pH 6.0

Positive Controls:

WB : A431 cells, human milk, A549 cells

IHC : human tonsillitis tissue, human cervical cancer tissue, human skin cancer tissue

IF/ICC : A431 cells,

Background Information

Keratins are a large family of proteins that form the intermediate filament cytoskeleton of epithelial cells, which are classified into two major sequence types. Type I keratins are a group of acidic intermediate filament proteins, including K9-K23, and the hair keratins Ha1-Ha8. Type II keratins are the basic or neutral counterparts to the acidic type I keratins, including K1-K8, and the hair keratins, Hb1-Hb6. Keratin 16 is a type I cytokeratin. It is paired with keratin 6 in a number of epithelial tissues, including nail bed, esophagus, tongue, and hair follicles.

Notable Publications

Author	Pubmed ID	Journal	Application
Maha Elazezy	34359774	Cancers (Basel)	WB,IHC,IF
Xing Ren	39383566	J Photochem Photobiol B	WB
Ming-Yue Li	38901654	Genomics	WB,IHC

Storage

Storage:

Store at -20°C. Stable for one year after shipment.

Storage Buffer:

PBS with 0.02% sodium azide and 50% glycerol, pH7.3

Aliquoting is unnecessary for -20°C storage

*** 20ul sizes contain 0.1% BSA

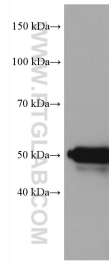
For technical support and original validation data for this product please contact:

T: 1 (888) 4PTGLAB (1-888-478-4522) (toll free in USA), or 1(312) 455-8498 (outside USA)

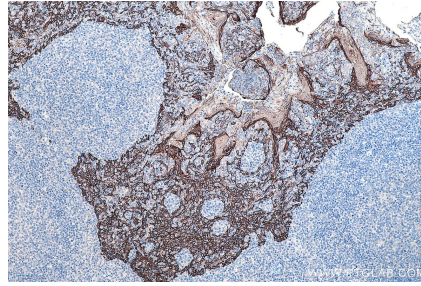
E: proteintech@ptglab.com
W: ptglab.com

This product is exclusively available under Proteintech Group brand and is not available to purchase from any other manufacturer.

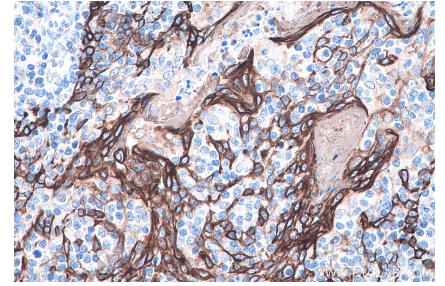
Selected Validation Data



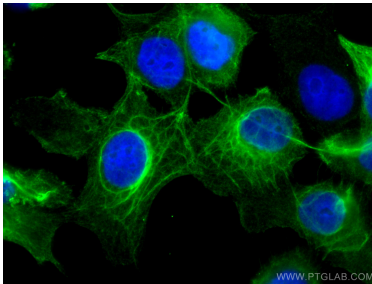
A431 cells were subjected to SDS PAGE followed by western blot with 66802-1-Ig (Cytokeratin 16 antibody) at dilution of 1:10000 incubated at room temperature for 1.5 hours.



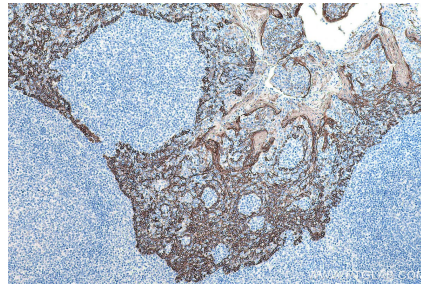
Immunohistochemical analysis of paraffin-embedded human tonsillitis tissue slide using 66802-1-Ig (Cytokeratin 16 antibody) at dilution of 1:4000 (under 10x lens). Heat mediated antigen retrieval with Tris-EDTA buffer (pH 9.0).



Immunohistochemical analysis of paraffin-embedded human tonsillitis tissue slide using 66802-1-Ig (Cytokeratin 16 antibody) at dilution of 1:4000 (under 40x lens). Heat mediated antigen retrieval with Tris-EDTA buffer (pH 9.0).



Immunofluorescent analysis of (-20°C Ethanol) fixed A431 cells using Cytokeratin 16 antibody (66802-1-Ig, Clone: 2H4D8) at dilution of 1:400 and CoraLite®488-Conjugated AffiniPure Goat Anti-Mouse IgG(H+L).



Immunohistochemical analysis of paraffin-embedded human tonsillitis tissue slide using 66802-1-Ig (Cytokeratin 16 antibody) at dilution of 1:8000 (under 10x lens). Heat mediated antigen retrieval with Tris-EDTA buffer (pH 9.0).