

For Research Use Only

# APOE Monoclonal antibody

Catalog Number: 66830-1-Ig **2 Publications**



## Basic Information

<b>Catalog Number:</b> 66830-1-Ig	<b>GenBank Accession Number:</b> BC003557	<b>Purification Method:</b> Protein G purification
<b>Size:</b> 150ul , Concentration: 1000 µg/ml by Bradford method using BSA as the standard;	<b>GeneID (NCBI):</b> 348	<b>CloneNo.:</b> 1B2C9
<b>Source:</b> Mouse	<b>Full Name:</b> apolipoprotein E	<b>Recommended Dilutions:</b> WB 1:3000-1:20000 IHC 1:50-1:500 IF 1:50-1:500
<b>Isotype:</b> IgG1	<b>Calculated MW:</b> 36 kDa	
<b>Immunogen Catalog Number:</b> AG28186	<b>Observed MW:</b> 34-36 kDa	

## Applications

<b>Tested Applications:</b> IF, IHC, WB, ELISA	<b>Positive Controls:</b> WB : human plasma tissue, human blood tissue, T-47D cells IHC : mouse brain tissue, IF : HepG2 cells,
<b>Cited Applications:</b> IF, WB	
<b>Species Specificity:</b> human, mouse	
<b>Cited Species:</b> human, mouse	
<b>Note-IHC: suggested antigen retrieval with TE buffer pH 9.0; (*) Alternatively, antigen retrieval may be performed with citrate buffer pH 6.0</b>	

## Background Information

The apolipoprotein E (APOE) is a 299-amino acid polypeptide that mediates the binding, internalization, and catabolism of lipoprotein particles, and also serve as a ligand for the LDL (APO B/E) receptor and for the specific APOE receptor (chylomicron remnant) of hepatic tissues. The very strong association of the APOE  $\epsilon 4$  allele with AD risk and its role in the accumulation of amyloid  $\beta$  in brains of people and animal models solidify the biological relevance of APOE isoforms but do not provide mechanistic insight.

## Notable Publications

Author	Pubmed ID	Journal	Application
Hideaki Morishita	31526472	Elife	WB,IF
Anika Alberts	33363539	Front Immunol	WB

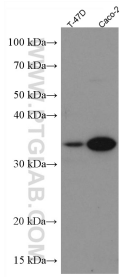
## Storage

**Storage:**  
Store at -20°C. Stable for one year after shipment.  
**Storage Buffer:**  
PBS with 0.02% sodium azide and 50% glycerol pH 7.3.  
Aliquoting is unnecessary for -20°C storage

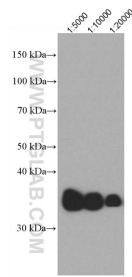
For technical support and original validation data for this product please contact:  
T: 1 (888) 4PTGLAB (1-888-478-4522) (toll free in USA), or 1(312) 455-8498 (outside USA) E: proteintech@ptglab.com W: ptglab.com

**This product is exclusively available under Proteintech Group brand and is not available to purchase from any other manufacturer.**

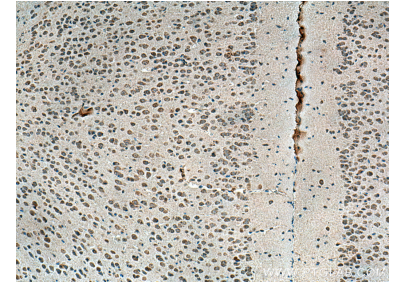
## Selected Validation Data



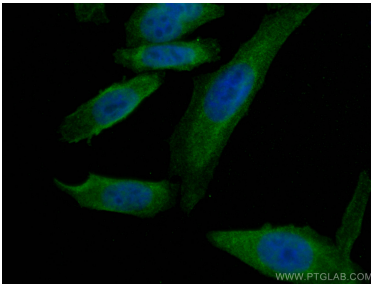
Various lysates were subjected to SDS PAGE followed by western blot with 66830-1-Ig (APOE antibody) at dilution of 1:3000 incubated at room temperature for 1.5 hours.



human plasma was subjected to SDS PAGE followed by western blot with 66830-1-Ig (APOE antibody) at a range of dilutions from 1:5000 to 1:20000 incubated at room temperature for 1.5 hours.



Immunohistochemical analysis of paraffin-embedded mouse brain tissue slide using 66830-1-Ig (APOE antibody) at dilution of 1:0 (under 10x lens). Heat mediated antigen retrieval with Tris-EDTA buffer (pH 9.0).



Immunofluorescent analysis of (4% PFA) fixed HepG2 cells using APOE antibody (66830-1-Ig, Clone: 1B2C9) at dilution of 1:100 and CoraLite®488-Conjugated AffiniPure Goat Anti-Mouse IgG(H+L).