

For Research Use Only

# GLUT4 Monoclonal antibody

Catalog Number: 66846-1-Ig **16 Publications**



## Basic Information

<b>Catalog Number:</b> 66846-1-Ig	<b>GenBank Accession Number:</b> BC069615	<b>Purification Method:</b> Protein A purification
<b>Size:</b> 150ul , Concentration: 1000 µg/ml by Bradford method using BSA as the standard;	<b>GeneID (NCBI):</b> 6517	<b>CloneNo.:</b> 3G7C9
<b>Source:</b> Mouse	<b>Full Name:</b> solute carrier family 2 (facilitated glucose transporter), member 4	<b>Recommended Dilutions:</b> WB 1:1000-1:3000 IHC 1:50-1:500
<b>Isotype:</b> IgG2b	<b>Calculated MW:</b> 509 aa, 55 kDa	
<b>Immunogen Catalog Number:</b> AG15390	<b>Observed MW:</b> 48-50 kDa	

## Applications

<b>Tested Applications:</b> IHC, WB, ELISA	<b>Positive Controls:</b> WB : rat heart tissue, human heart tissue, human skeletal muscle tissue, C2C12 cells IHC : mouse heart tissue,
<b>Cited Applications:</b> IF, IHC, WB	
<b>Species Specificity:</b> Human, mouse, rat, pig	
<b>Cited Species:</b> hamster, human, mouse, rat	
<b>Note-IHC: suggested antigen retrieval with TE buffer pH 9.0; (*) Alternatively, antigen retrieval may be performed with citrate buffer pH 6.0</b>	

## Background Information

GLUT4 is a member of GLUT family of transmembrane hexose transporters. It is an INS receptor that mediates INS-stimulated glucose transport in fat and muscle where it is predominantly expressed. In response to INS stimulation, GLUT4 experienced translocation from trans-Golgi network to plasma membrane. The impairment of GLUT4 translocation is associated with diabetes.

## Notable Publications

Author	Pubmed ID	Journal	Application
Miao Chen	32880392	Clin Sci (Lond)	WB
Xue Han	31750946	J Food Sci	WB
Na Sun	33867847	Int J Biol Sci	WB

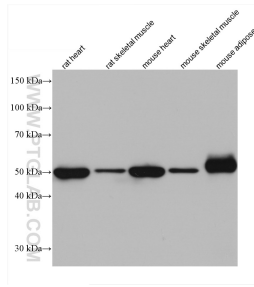
## Storage

**Storage:**  
Store at -20°C. Stable for one year after shipment.  
**Storage Buffer:**  
PBS with 0.02% sodium azide and 50% glycerol pH 7.3.  
Aliquoting is unnecessary for -20°C storage

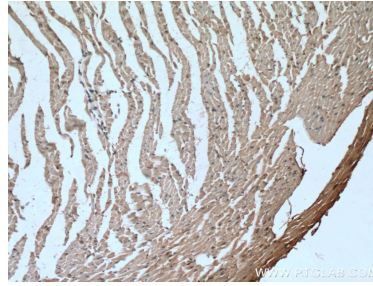
For technical support and original validation data for this product please contact:  
T: 1 (888) 4PTGLAB (1-888-478-4522) (toll free in USA), or 1(312) 455-8498 (outside USA)  
E: proteintech@ptglab.com  
W: ptglab.com

**This product is exclusively available under Proteintech Group brand and is not available to purchase from any other manufacturer.**

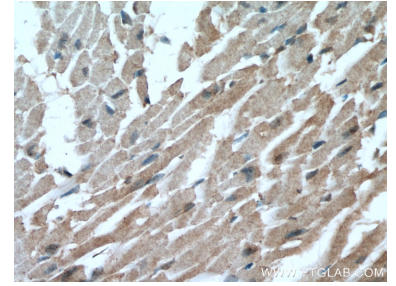
## Selected Validation Data



Various lysates were subjected to SDS PAGE followed by western blot with 66846-1-Ig (GLUT4 antibody) at dilution of 1:3000 incubated at room temperature for 1.5 hours.



Immunohistochemical analysis of paraffin-embedded mouse heart tissue slide using 66846-1-Ig (GLUT4 antibody) at dilution of 1:200 (under 10x lens). Heat mediated antigen retrieval with Tris-EDTA buffer (pH 9.0).



Immunohistochemical analysis of paraffin-embedded mouse heart tissue slide using 66846-1-Ig (GLUT4 antibody) at dilution of 1:200 (under 40x lens). Heat mediated antigen retrieval with Tris-EDTA buffer (pH 9.0).