

For Research Use Only

JTV1 Monoclonal antibody

Catalog Number: 66848-1-Ig



Basic Information

Catalog Number: 66848-1-Ig	GenBank Accession Number: BC002853	Purification Method: Protein A purification
Size: 150ul , Concentration: 1758 ug/ml by Nanodrop and 1000 ug/ml by Bradford method using BSA as the standard;	GeneID (NCBI): 7965	CloneNo.: 1D6B5
Source: Mouse	UNIPROT ID: Q13155	Recommended Dilutions: WB: 1:2000-1:10000 IHC: 1:250-1:1000 FC (Intra): 0.80 ug per 10 ⁶ cells in a 100 µl suspension
Isotype: IgG2b	Full Name: JTV1 gene	
Immunogen Catalog Number: AG0675	Calculated MW: 36 kDa	
	Observed MW: 32-36 kDa	

Applications

Tested Applications: WB, IHC, FC (Intra), ELISA	Positive Controls:
Species Specificity: human, mouse, rat	WB : HeLa cells, Jurkat cells, HEK-293 cells, HepG2 cells, HL-60 cells. HSC-T6 cells, NIH/3T3 cells
Note-IHC: suggested antigen retrieval with TE buffer pH 9.0; (*) Alternatively, antigen retrieval may be performed with citrate buffer pH 6.0	IHC : mouse testis tissue,
	FC (Intra) : HepG2 cells,

Background Information

JTV1, also named p38, AIMP2, was first known as a factor associated with macromolecular protein complex, which consists several different aminoacyl-tRNA synthetases. JTV1 is a scaffold protein required for the assembly and stability of the multi-tRNA synthetase complex. JTV1 could act as a mediator of TGF-beta signaling and its functional importance in the control of MYC during lung differentiation. Blocks MDM2-mediated ubiquitination and degradation of p53/TP53. Functions as a proapoptotic factor.

Storage

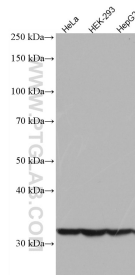
Storage:
Store at -20°C. Stable for one year after shipment.
Storage Buffer:
PBS with 0.02% sodium azide and 50% glycerol, pH7.3
Aliquoting is unnecessary for -20°C storage

*** 20ul sizes contain 0.1% BSA

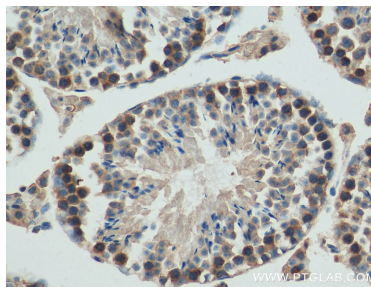
For technical support and original validation data for this product please contact:
T: 1 (888) 4PTGLAB (1-888-478-4522) (toll free in USA), or 1(312) 455-8498 (outside USA)
E: proteintech@ptglab.com
W: ptglab.com

This product is exclusively available under Proteintech Group brand and is not available to purchase from any other manufacturer.

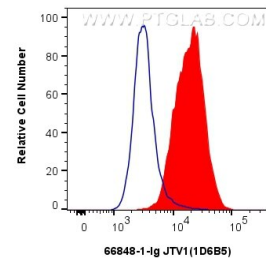
Selected Validation Data



Various lysates were subjected to SDS PAGE followed by western blot with 66848-1-Ig (JTV1 antibody) at dilution of 1:5000 incubated at room temperature for 1.5 hours.



Immunohistochemical analysis of paraffin-embedded mouse testis tissue slide using 66848-1-Ig (JTV1 antibody) at dilution of 1:500 (under 40x lens). Heat mediated antigen retrieval with Tris-EDTA buffer (pH 9.0).



1×10^6 HepG2 cells were intracellularly stained with 0.8 μ g JTV1 Monoclonal antibody (66848-1-Ig, Clone:1D6B5) and CoraLite®488-Conjugated Goat Anti-Mouse IgG(H+L) (SA00013-1)(red), or 0.8 μ g Mouse IgG2b isotype control Mouse McAb (66360-3-Ig, Clone: 11B8C4) (blue). Cells were fixed with 4% PFA and permeabilized with Flow Cytometry Perm Buffer (PF00011-C).