

For Research Use Only

GRB2 Monoclonal antibody

Catalog Number: 66880-1-Ig

Featured Product

1 Publications



Basic Information

Catalog Number: 66880-1-Ig	GenBank Accession Number: BC000631	Purification Method: Protein A purification
Size: 150UL, Concentration: 1000 µg/ml by 2885 Bradford method using BSA as the standard;	GeneID (NCBI): 2885	CloneNo.: 1C5D11
Source: Mouse	Full Name: growth factor receptor-bound protein 2	Recommended Dilutions: WB 1:2000-1:10000 IHC 1:250-1:1000
Isotype: IgG1	Calculated MW: 25 kDa	
Immunogen Catalog Number: AG0395	Observed MW: 25 kDa	

Applications

Tested Applications:

IHC, WB, ELISA

Cited Applications:

WB

Species Specificity:

Human, Mouse, Rat

Cited Species:

rat

**Note-IHC: suggested antigen retrieval with
TE buffer pH 9.0; (*) Alternatively, antigen
retrieval may be performed with citrate
buffer pH 6.0**

Positive Controls:

WB : Jurkat cells, HeLa cells, HEK-293 cells, HepG2
cells, HSC-T6 cells, PC-12 cells, NIH/3T3 cells

IHC : human pancreas cancer tissue,

Background Information

GRB2 (growth factor receptor-bound protein 2) binds the epidermal growth factor receptor and contains one SH2 domain and two SH3 domains. Two alternatively spliced transcript variants encoding different isoforms have been found for this gene. N-SH3 domain of Grb2 was involved in the protein vesicular localization including amyloid-β protein precursor (AβPP). Involvement of GRB2 in Ras-signaling pathway has been reported, recent finding show that GRB2 may also play a complex role in T and B-cell antigen receptor signaling.

Notable Publications

Author	Pubmed ID	Journal	Application
Xiaoqin Yu	32652777	FASEB J	WB

Storage

Storage:

Store at -20°C. Stable for one year after shipment.

Storage Buffer:

PBS with 0.02% sodium azide and 50% glycerol pH 7.3.

Aliquoting is unnecessary for -20°C storage

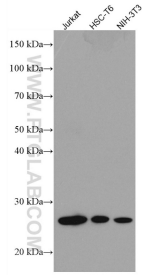
For technical support and original validation data for this product please contact:

T: 1 (888) 4PTGLAB (1-888-478-4522) (toll free
in USA), or 1(312) 455-8498 (outside USA)

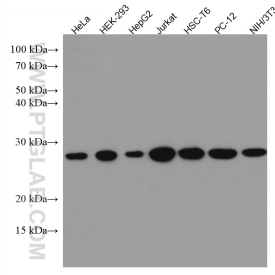
E: proteintech@ptglab.com
W: ptglab.com

**This product is exclusively available under Proteintech
Group brand and is not available to purchase from any
other manufacturer.**

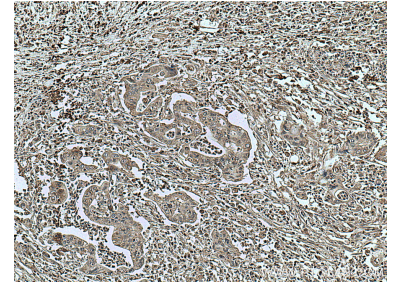
Selected Validation Data



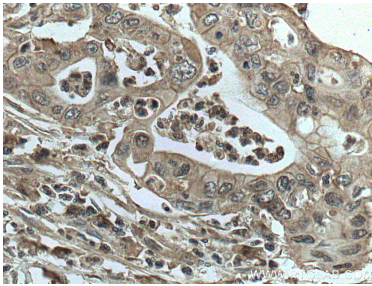
Various lysates were subjected to SDS PAGE followed by western blot with 66880-1-Ig (GRB2 antibody) at dilution of 1:5000 incubated at room temperature for 1.5 hours.



Various lysates were subjected to SDS PAGE followed by western blot with 66880-1-Ig (GRB2 antibody) at dilution of 1:5000 incubated at room temperature for 1.5 hours.



Immunohistochemical analysis of paraffin-embedded human pancreas cancer tissue slide using 66880-1-Ig (GRB2 antibody) at dilution of 1:500 (under 10x lens. Heat mediated antigen retrieval with Tris-EDTA buffer (pH 9.0).



Immunohistochemical analysis of paraffin-embedded human pancreas cancer tissue slide using 66880-1-Ig (GRB2 antibody) at dilution of 1:500 (under 40x lens. Heat mediated antigen retrieval with Tris-EDTA buffer (pH 9.0).