

For Research Use Only

C7 Monoclonal antibody

Catalog Number: 66908-1-Ig **1 Publications**



Basic Information

Catalog Number: 66908-1-Ig	GenBank Accession Number: BC063851	Purification Method: Protein G purification
Size: 150ul , Concentration: 2000 ug/ml by Nanodrop and 1000 ug/ml by Bradford method using BSA as the standard;	GeneID (NCBI): 730	CloneNo.: 1H9C4
Source: Mouse	UNIPROT ID: P10643	Recommended Dilutions: WB: 1:2000-1:10000 IF/ICC: 1:400-1:1600 FC (Intra): 0.80 ug per 10 ⁶ cells in a 100 µl suspension
Isotype: IgG1	Full Name: complement component 7	
Immunogen Catalog Number: AG12552	Calculated MW: 843 aa, 94 kDa	
	Observed MW: 100 kDa	

Applications

Tested Applications: WB, IF/ICC, ELISA	Positive Controls: WB : human plasma tissue, IF/ICC : HepG2 cells, FC (Intra) : HepG2 cells,
Cited Applications: IF	
Species Specificity: human	
Cited Species: pig	

Background Information

C7, a single-chain plasma glycoprotein, is a component of the complement system. It is a constituent of the membrane attack complex (MAC) that plays a key role in the innate and adaptive immune response by forming pores in the plasma membrane of target cells. C7 serves as a membrane anchor. People with C7 deficiency are prone to bacterial infection.

Notable Publications

Author	Pubmed ID	Journal	Application
Nadia Khavesh	39568509	Front Cell Dev Biol	IF

Storage

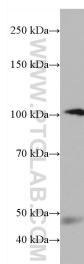
Storage:
Store at -20°C. Stable for one year after shipment.
Storage Buffer:
PBS with 0.02% sodium azide and 50% glycerol, pH7.3
Aliquoting is unnecessary for -20°C storage

*** 20ul sizes contain 0.1% BSA

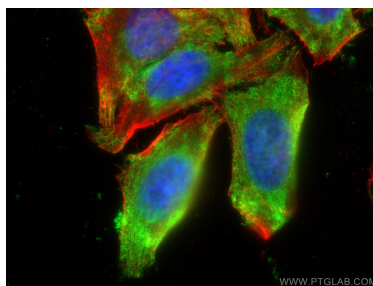
For technical support and original validation data for this product please contact:
T: 1 (888) 4PTGLAB (1-888-478-4522) (toll free in USA), or 1(312) 455-8498 (outside USA)
E: proteintech@ptglab.com
W: ptglab.com

This product is exclusively available under Proteintech Group brand and is not available to purchase from any other manufacturer.

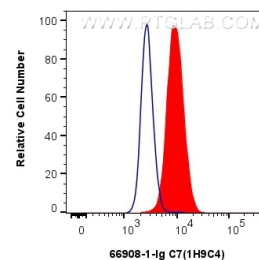
Selected Validation Data



human plasma were subjected to SDS PAGE followed by western blot with 66908-1-Ig (C7 antibody) at dilution of 1:5000 incubated at room temperature for 1.5 hours.



Immunofluorescent analysis of (-20°C Ethanol) fixed HepG2 cells using C7 antibody (66908-1-Ig, Clone: 1H9C4) at dilution of 1:800 and CoraLite®488-Conjugated Goat Anti-Mouse IgG(H+L), CL594-phalloidin (red).



1x10⁶ HepG2 cells were intracellularly stained with 0.8 ug C7 Monoclonal antibody (66908-1-Ig, Clone:1H9C4) and CoraLite®488-Conjugated Goat Anti-Mouse IgG(H+L) (SA00013-1)(red), or 0.8 ug Mouse IgG1 isotype control Mouse McAb (66360-1-Ig, Clone: 1F8D3) (blue). Cells were fixed with 4% PFA and permeabilized with Flow Cytometry Perm Buffer (PF00011-C).