

For Research Use Only

# CDC25C Monoclonal antibody

Catalog Number: 66912-1-Ig 6 Publications



## Basic Information

<b>Catalog Number:</b> 66912-1-Ig	<b>GenBank Accession Number:</b> BC019089	<b>Purification Method:</b> Protein G purification
<b>Size:</b> 150ul , Concentration: 2200 ug/ml by 995 Nanodrop and 1000 ug/ml by Bradford method using BSA as the standard;	<b>GeneID (NCBI):</b> P30307	<b>CloneNo.:</b> 2B6B12
<b>Source:</b> Mouse	<b>UNIPROT ID:</b> P30307	<b>Recommended Dilutions:</b> WB 1:5000-1:50000
<b>Isotype:</b> IgG1	<b>Full Name:</b> cell division cycle 25 homolog C (S. pombe)	
<b>Immunogen Catalog Number:</b> AG10240	<b>Calculated MW:</b> 473 aa, 53 kDa	
	<b>Observed MW:</b> 46-53 kDa	

## Applications

<b>Tested Applications:</b> WB, ELISA	<b>Positive Controls:</b> WB : HeLa cells, HepG2 cells, HEK-293 cells, Jurkat cells, K-562 cells, HSC-T6 cells, PC-12 cells, NIH/3T3 cells, Raji cells
<b>Cited Applications:</b> WB	
<b>Species Specificity:</b> human, mouse, rat	
<b>Cited Species:</b> human, mouse	

## Background Information

The cell division cycle 25 (CDC25) family of proteins are highly conserved dual specificity phosphatases that activate cyclin-dependent kinase (CDK) complexes, which in turn regulate progression through the cell division cycle. CDC25C (cell division cycle 25 homolog C) is one of the 3 isoforms of CDC25 in mammalian cells. It is present in the cytoplasm of asynchronously growing human cells (PMID:10330186). And it may be phosphorylated by its own substrate, an active cdc2-cyclin B complex, to create an autoactivation loop (PMID:7937793). It can be hyperphosphorylated to get the active form of 70 kDa (PMID:18296513). CDC25C has some isoforms with molecular mass of 46-53 kDa.

## Notable Publications

Author	Pubmed ID	Journal	Application
Silu Hou	36427601	Food Chem Toxicol	WB
Jun Ma	34820015	Oncol Lett	WB
Ming Li	36526012	Toxicology	WB

## Storage

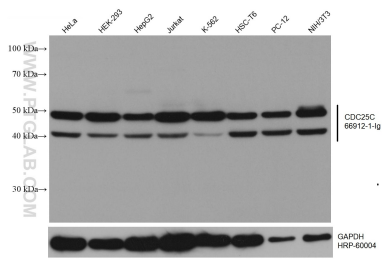
**Storage:**  
Store at -20°C. Stable for one year after shipment.  
**Storage Buffer:**  
PBS with 0.02% sodium azide and 50% glycerol, pH7.3  
Aliquoting is unnecessary for -20°C storage

\*\*\* 20ul sizes contain 0.1% BSA

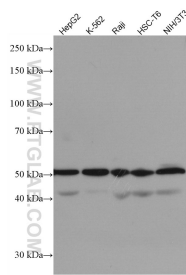
For technical support and original validation data for this product please contact:  
T: 1 (888) 4PTGLAB (1-888-478-4522) (toll free in USA), or 1(312) 455-8498 (outside USA)  
E: proteintech@ptglab.com  
W: ptglab.com

This product is exclusively available under Proteintech Group brand and is not available to purchase from any other manufacturer.

## Selected Validation Data



Various lysates were subjected to SDS PAGE followed by western blot with 66912-1-Ig (CDC25C antibody) at dilution of 1:10000 incubated at room temperature for 1.5 hours. The membrane was stripped and reblotted with HRP-conjugated GAPDH Monoclonal antibody (HRP-60004) as loading control.



Various lysates were subjected to SDS PAGE followed by western blot with 66912-1-Ig (CDC25C antibody) at dilution of 1:3000 incubated at room temperature for 1.5 hours.