

For Research Use Only

CX3CR1 Monoclonal antibody

Catalog Number: 66915-1-Ig **1 Publications**



Basic Information

| | | |
|---|--|---|
| Catalog Number: 66915-1-Ig | GenBank Accession Number: BC028078 | Purification Method: Protein G purification |
| Size: 150ul , Concentration: 1000 ug/ml by Nanodrop and 540 ug/ml by Bradford method using BSA as the standard; | GeneID (NCBI): 1524 | CloneNo.: 3D3B8 |
| Source: Mouse | UNIPROT ID: P49238 | Recommended Dilutions: WB 1:2000-1:10000 IHC 1:250-1:1000 IF-P 1:50-1:500 |
| Isotype: IgG1 | Full Name: chemokine (C-X3-C motif) receptor 1 | |
| Immunogen Catalog Number: AG27698 | Calculated MW: 40 kDa | |
| | Observed MW: 44 kDa | |

Applications

| | |
|--|--|
| Tested Applications: WB, IHC, IF-P, ELISA | Positive Controls: WB : HEK-293 cells, Jurkat cells, SH-SY5Y cells, U-937 cells IHC : mouse kidney tissue, IF-P : mouse kidney tissue, |
| Cited Applications: WB | |
| Species Specificity: human, mouse | |
| Cited Species: mouse | |
| Note-IHC: suggested antigen retrieval with TE buffer pH 9.0; (*) Alternatively, antigen retrieval may be performed with citrate buffer pH 6.0 | |

Background Information

CX3CR1, also known as GPR13, V28, and fractalkine receptor, belongs to the 7-transmembrane G protein-coupled receptor (GPCR) family. It is expressed in microglia, astrocytes, NK cells, monocytes/macrophages, and a subpopulation of T cells. CX3CR1 is the receptor for fractalkine (CX3CL1) and mediates both its adhesive and migratory functions. It also acts as a coreceptor with CD4 for HIV-1 virus envelope protein (in vitro), and some variations in the gene of CX3CR1 lead to increased susceptibility to HIV-1 infection and rapid progression to AIDS. Defects in CX3CR1 are a cause of susceptibility to age-related macular degeneration type 12 (ARMD12).

Notable Publications

| Author | Pubmed ID | Journal | Application |
|-------------|-----------|-----------------|-------------|
| Ruiqi Cheng | 39475454 | Adv Sci (Weinh) | WB |

Storage

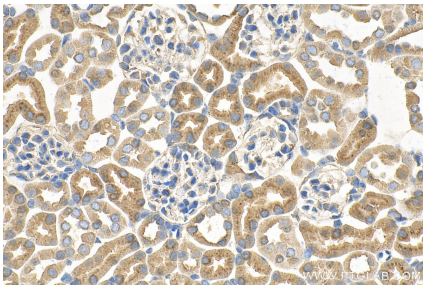
Storage:
Store at -20°C. Stable for one year after shipment.
Storage Buffer:
PBS with 0.02% sodium azide and 50% glycerol, pH7.3
Aliquoting is unnecessary for -20°C storage

*** 20ul sizes contain 0.1% BSA

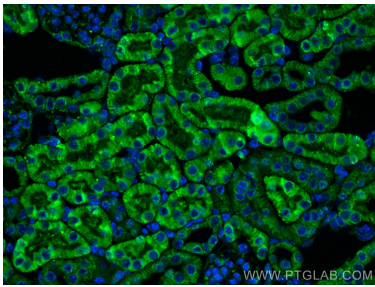
For technical support and original validation data for this product please contact:
T: 1 (888) 4PTGLAB (1-888-478-4522) (toll free in USA), or 1(312) 455-8498 (outside USA)
E: proteintech@ptglab.com
W: ptglab.com

This product is exclusively available under Proteintech Group brand and is not available to purchase from any other manufacturer.

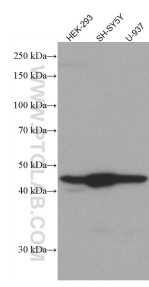
Selected Validation Data



Immunohistochemical analysis of paraffin-embedded mouse kidney tissue slide using 66915-1-Ig (CX3CR1 antibody) at dilution of 1:500 (under 40x lens). Heat mediated antigen retrieval with Tris-EDTA buffer (pH 9.0).



Immunofluorescent analysis of (4% PFA) fixed mouse kidney tissue using CX3CR1 antibody (66915-1-Ig, Clone: 3D3B8) at dilution of 1:200 and CoraLite®488-Conjugated AffiniPure Goat Anti-Mouse IgG(H+L).



Various lysates were subjected to SDS PAGE followed by western blot with 66915-1-Ig (CX3CR1 antibody) at dilution of 1:5000 incubated at room temperature for 1.5 hours.