

For Research Use Only

# IDH2 Monoclonal ANTIBODY



Catalog Number: 66918-1-Ig **Featured Product**

## Basic Information

<b>Catalog Number:</b> 66918-1-Ig	<b>GenBank Accession Number:</b> BC009244	<b>Purification Method:</b> Protein G purification
<b>Size:</b> 150UL, Concentration: 1000 µg/ml by Bradford method using BSA as the standard;	<b>GeneID (NCBI):</b> 3418	<b>CloneNo.:</b> 1F10A10
<b>Source:</b> Mouse	<b>Full Name:</b> isocitrate dehydrogenase 2 (NADP+), mitochondrial	<b>Recommended Dilutions:</b> WB 1:1000-1:4000
<b>Isotype:</b> IgG1	<b>Calculated MW:</b> 452 aa, 51 kDa	
<b>Immunogen Catalog Number:</b> AG8950	<b>Observed MW:</b> 45 kDa	

## Applications

<b>Tested Applications:</b> WB, ELISA	<b>Positive Controls:</b> WB: Jurkat cells, HEK-293 cells, HepG2 cells, SH-SY5Y cells, K-562 cells
<b>Species Specificity:</b> Human	

## Background Information

IDH2, also named as IDP and ICD-M, belongs to the isocitrate and isopropylmalate dehydrogenases family. It plays a role in intermediary metabolism and energy production. IDH2 is a mitochondrial NADP-dependent isocitrate dehydrogenase that catalyzes oxidative decarboxylation of isocitrate to alpha-ketoglutarate, producing NADPH. It may tightly associate or interact with the pyruvate dehydrogenase complex. IDH1 and IDH2 mutations could also contribute to tumorigenesis and cancer progression through increased mutagenesis. IDH2 has 2 isoforms with the MW of 51 kDa and 45 kDa, and the mature form is about 47 kDa and 41 kDa with the N-terminal transit peptide cleaved.

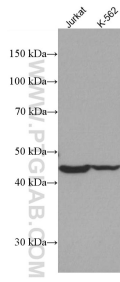
## Storage

**Storage:**  
Store at -20°C. Stable for one year after shipment.  
**Storage Buffer:**  
PBS with 0.1% sodium azide and 50% glycerol pH 7.3.  
Aliquoting is unnecessary for -20°C storage

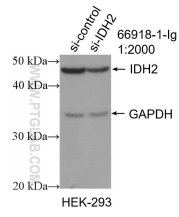
For technical support and original validation data for this product please contact:  
T: 1 (888) 4PTGLAB (1-888-478-4522) (toll free in USA), or 1(312) 455-8498 (outside USA)  
E: proteintech@ptglab.com  
W: ptglab.com

**This product is exclusively available under Proteintech Group brand and is not available to purchase from any other manufacturer.**

## Selected Validation Data



Various lysates were subjected to SDS PAGE followed by western blot with 66918-1-Ig (IDH2 antibody) at dilution of 1:2000 incubated at room temperature for 1.5 hours.



WB result of IDH2 antibody (66918-1-Ig; 1:2000; incubated at room temperature for 1.5 hours) with sh-Control and sh-IDH2 transfected HEK-293 cells.