

For Research Use Only

Endothelin 1 Monoclonal antibody

Catalog Number: 67008-1-Ig



Basic Information

Catalog Number: 67008-1-Ig	GenBank Accession Number: BC009720	Purification Method: Protein G purification
Size: 150ul , Concentration: 1000 µg/ml by Bradford method using BSA as the standard;	GeneID (NCBI): 1906	CloneNo.: 2C5B3
Source: Mouse	Full Name: endothelin 1	Recommended Dilutions: WB 1:1000-1:4000
Isotype: IgG1	Calculated MW: 212 aa, 24 kDa	
Immunogen Catalog Number: AG28334	Observed MW: 24 kDa	

Applications

Tested Applications: FC, WB, ELISA	Positive Controls: WB : human placenta tissue,
Species Specificity: Human	

Background Information

EDN1, also named as Endothelin-1, PPET1 and ET-1, belongs to the endothelin/sarafotoxin family. Endothelins are endothelium-derived vasoconstrictor peptides. Emerging basic science, and animal and human data all suggest that EDN1 is a potentially important contributor in the pathobiology of fibrosing disorders, including those that affect the lung (PMID:20055532).

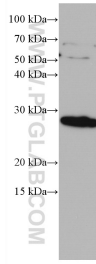
Storage

Storage:
Store at -20°C.
Storage Buffer:
PBS with 0.02% sodium azide and 50% glycerol pH 7.3.
Aliquoting is unnecessary for -20°C storage

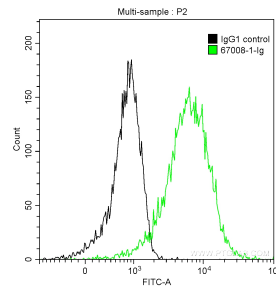
For technical support and original validation data for this product please contact:
T: 1 (888) 4PTGLAB (1-888-478-4522) (toll free in USA), or 1(312) 455-8498 (outside USA)
E: proteintech@ptglab.com
W: ptglab.com

This product is exclusively available under Proteintech Group brand and is not available to purchase from any other manufacturer.

Selected Validation Data



human placenta tissue were subjected to SDS PAGE followed by western blot with 67008-1-Ig (EDN1 antibody) at dilution of 1:2000 incubated at room temperature for 1.5 hours.



1X10⁶ HEK-293T cells were intracellularly stained with 0.2 ug Anti-Human Endothelin 1 (67008-1-Ig, Clone:2C5B3) and CoraLite®488-Conjugated AffiniPure Goat Anti-Mouse IgG(H+L) at dilution 1:1000 (green), and 0.2 ug Mouse IgG1 Isotype Control (66360-1-Ig, Clone: T1F8D3F10) (black). Cells were fixed with 4% PFA and permeabilized with 0.1% TritonX-100.