

For Research Use Only

MAP2 Monoclonal antibody

Catalog Number: 67015-1-Ig **38 Publications**



Basic Information

Catalog Number: 67015-1-Ig	GenBank Accession Number: BC038857	Purification Method: Protein A purification
Size: 150ul , Concentration: 1000 ug/ml by Nanodrop;	GeneID (NCBI): 4133	CloneNo.: 1C3E6
Source: Mouse	UNIPROT ID: P11137	Recommended Dilutions: IHC: 1:1000-1:4000 IF-P: 1:200-1:800 IF-Fro: 1:1000-1:4000 FC (Intra): 0.40 ug per 10 ⁶ cells in a 100 µl suspension
Isotype: IgG2b	Full Name: microtubule-associated protein 2	
Immunogen Catalog Number: AG11349	Calculated MW: 200 kDa	

Applications

Tested Applications: IHC, IF-P, IF-Fro, FC (Intra), ELISA	Positive Controls:
Cited Applications: WB, IHC, IF, IP	IHC : mouse brain tissue, rat cerebellum tissue, rat brain tissue, human brain tissue, mouse cerebellum tissue
Species Specificity: human, mouse, rat	IF-P : rat brain tissue, mouse brain tissue
Cited Species: human, mouse, rat, monkey	IF-Fro : rat brain tissue, mouse brain tissue
Note-IHC: suggested antigen retrieval with TE buffer pH 9.0; (*) Alternatively, antigen retrieval may be performed with citrate buffer pH 6.0	FC (Intra) : Neuro-2a cells,

Background Information

MAP2 (microtubule-associated protein 2) is a cytoskeleton protein abundant in brain and has important role in neuronal morphogenesis. Multiple high molecular weight (MW) and low molecular weight (MW) MAP2 isoforms are expressed within axons, dendrites, and cell bodies. The expression of MAP2 is regulated in both a tissue- and developmentally specific manner. MAP2 antibodies have been widely used to mark the neuron or dendrite formation.

Notable Publications

Author	Pubmed ID	Journal	Application
Lei-Lei Wang	34582787	Cell	IF
Zihu Tan	34025340	Front Neurosci	IF
Xin Sun	36254995	Neural Regen Res	IF

Storage

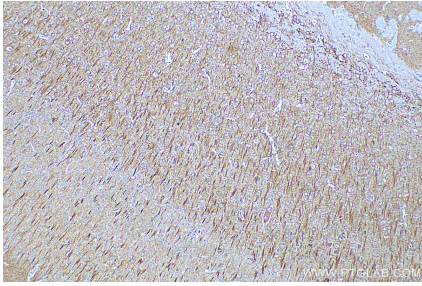
Storage:
Store at -20°C. Stable for one year after shipment.
Storage Buffer:
PBS with 0.02% sodium azide and 50% glycerol, pH7.3
Aliquoting is unnecessary for -20°C storage

*** 20ul sizes contain 0.1% BSA

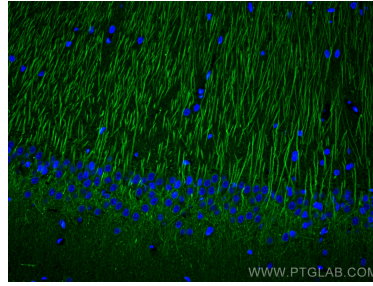
For technical support and original validation data for this product please contact:
T: 1 (888) 4PTGLAB (1-888-478-4522) (toll free in USA), or 1(312) 455-8498 (outside USA)
E: proteintech@ptglab.com
W: ptglab.com

This product is exclusively available under Proteintech Group brand and is not available to purchase from any other manufacturer.

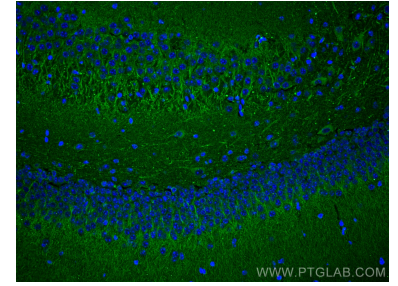
Selected Validation Data



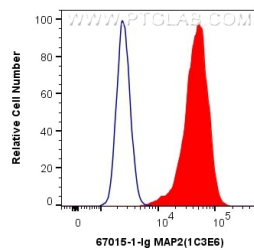
Immunohistochemical analysis of paraffin-embedded mouse brain tissue slide using 67015-1-Ig (MAP2 antibody) at dilution of 1:2000 (under 10x lens). Heat mediated antigen retrieval with Tris-EDTA buffer (pH 9.0).



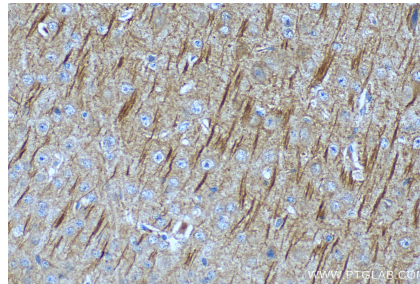
Immunofluorescent analysis of (4% PFA) fixed rat brain tissue using MAP2 antibody (67015-1-Ig, Clone: 1C3E6) at dilution of 1:400 and CoraLite®488-Conjugated AffiniPure Goat Anti-Mouse IgG(H+L).



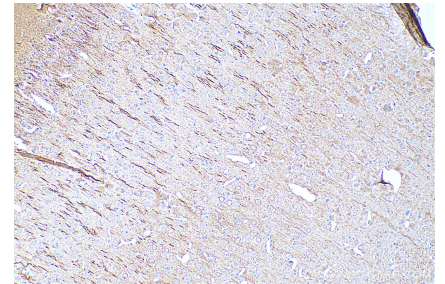
Immunofluorescent analysis of (4% PFA) fixed mouse brain tissue using MAP2 antibody (67015-1-Ig, Clone: 1C3E6) at dilution of 1:400 and CoraLite®488-Conjugated AffiniPure Goat Anti-Mouse IgG(H+L).



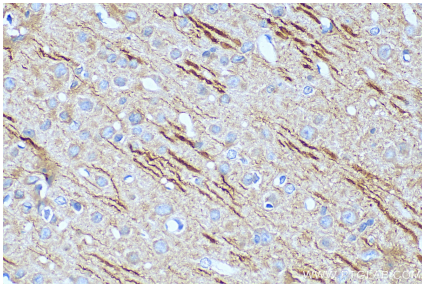
1X10⁶ Neuro-2a cells were intracellularly stained with 0.4 ug Anti-Human MAP2 (67015-1-Ig, Clone:1C3E6) and CoraLite®488-Conjugated AffiniPure Goat Anti-Mouse IgG(H+L) at dilution 1:1000 (red), or 0.4 ug Mouse IgG2b Isotype Control (MPC-11) (65128-1-Ig, Clone: MPC-11) (blue). Cells were fixed with 4% PFA and permeabilized with Flow Cytometry Perm Buffer (PF00011-C).



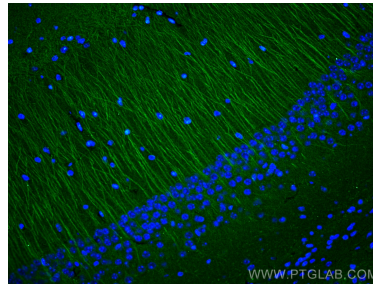
Immunohistochemical analysis of paraffin-embedded mouse brain tissue slide using 67015-1-Ig (MAP2 antibody) at dilution of 1:2000 (under 40x lens). Heat mediated antigen retrieval with Tris-EDTA buffer (pH 9.0).



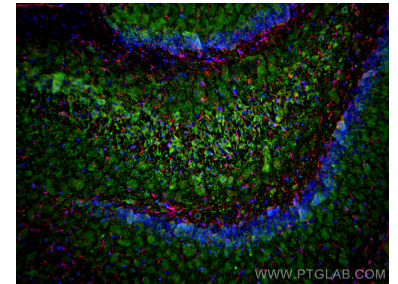
Immunohistochemical analysis of paraffin-embedded rat brain tissue slide using 67015-1-Ig (MAP2 antibody) at dilution of 1:2000 (under 10x lens). Heat mediated antigen retrieval with Tris-EDTA buffer (pH 9.0).



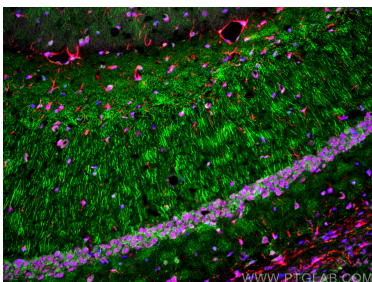
Immunohistochemical analysis of paraffin-embedded rat brain tissue slide using 67015-1-Ig (MAP2 antibody) at dilution of 1:2000 (under 40x lens). Heat mediated antigen retrieval with Tris-EDTA buffer (pH 9.0).



Immunofluorescent analysis of (4% PFA) fixed mouse brain tissue using MAP2 antibody (67015-1-Ig, Clone: 1C3E6) at dilution of 1:400 and CoraLite®488-Conjugated AffiniPure Goat Anti-Mouse IgG(H+L).



Immunofluorescent analysis of (4% PFA) fixed frozen OCT-embedded rat brain tissue using MAP2 antibody (67015-1-Ig, Clone: 1C3E6) at dilution of 1:2000 and CoraLite®488-Conjugated Goat Anti-Mouse IgG(H+L) (SA00013-1), GFAP antibody (81063-1-RR, Clone: 4C6, red).



Immunofluorescent analysis of (4% PFA) fixed frozen OCT-embedded mouse brain tissue using MAP2 antibody (67015-1-Ig, Clone: 1C3E6) at dilution of 1:2000 and CoraLite®488-Conjugated Goat Anti-Mouse IgG(H+L) (SA00013-1), CoraLite®594 GFAP antibody (CL594-16825, red), TDP-43 antibody (10782-2-AP, Magenta).